



# Fan heater SWX EX

Fan heater for environments with a temporary explosion risk

SWX EX is a fan heater specially designed for environments with a temporary explosion risk (Zone 1 and Zone 2).

Fan heater SWX has a robust design, adapted to the requirements of harsh environments. Supplied with air director with individually adjustable louvres that direct the air flow on one plane. SWX EX has an inspection hatch with quick release.

SWX is also available in versions for corrosive environments, dusty environments and rooms with high temperatures – see separate chapter for SWX C/D/H.

- Approved for use in zones where the explosion risk is due to gas or fumes (Equipment category 2G).
- Meets the requirements of the ATEX Directive 94/9/EC in the EU/EFTA.
- Thermistor motor protection U-EK230E included. To comply with the approval, this must be installed. Only for mounting outside ATEX-classed zones.
- Water coil with copper pipe. Aluminium fins.
- Intended for water temperatures up to +125 °C and 16 bar.
- Max. surrounding temperature -20 - +40 °C.
- Wall brackets included.
- Casing in stainless steel (EN 1.4016).

Fan heater SWX EX, for environments with a temporary explosion risk. (IP44)

Type	Heat output*1 [kW]	Airflow [m³/h]	Airflow [m³/s]	Sound level*2 [dB(A)]	Δt*1,3 [°C]	Air throw [m]	Water volume*4 [m]	Voltage [V]	Amperage [A]	HxWxD [mm]	Weight [kg]
SWXEX12	21	2250	0,6	61	28	8	8	400V3~	0,27	530x550x380	25
SWXEX22	39	4150	1,2	67	27	10	10	400V3~	0,6	655x705x430	42

\*1) Applicable at water temperature 80/60 °C, air temperature, in +15 °C.

\*2) Conditions: Distance to the unit 5 metres.

\*3) Δt = temperature rise of passing air at maximum heat output.

\*4) Water volume inside water coil.

SWX EX: II 2 G c Ex e IIB T4 Gb.

SWX EX is approved for use in zones where the explosion risk is due to gas or fumes (Equipment category 2G).

SWX EX has temperature class T4 (max 135 °C).

SWX EX meets the requirements of the ATEX Directive 94/9/EC for the EU/EFTA

SWX EX is manufactured in accordance with:

- LVD Directives: EN 60355-1 and EN 60335-2-30
- EMC Directives: EN 61000-6-1, EN 61000-6-2, EN 61000-6-3 and EN 61000-6-4
- EMF Directive: EN 62233

Frico's quality management system is certified by DNV Nemko Presafe AS (notified body number: 2460) in accordance with Presafe 15ATEX 7676X certificate.

Testing and certification of SWX EX have been carried out by NEMKO.

Applied testing standards:

- Protection class IP44, IEC/EN 60529
- General ATEX requirements IEC/EN 60079-0
- Ex "e" (increased safety) IEC/EN 60079-7

## Get In Touch



Call: [0845 6880112](tel:08456880112)



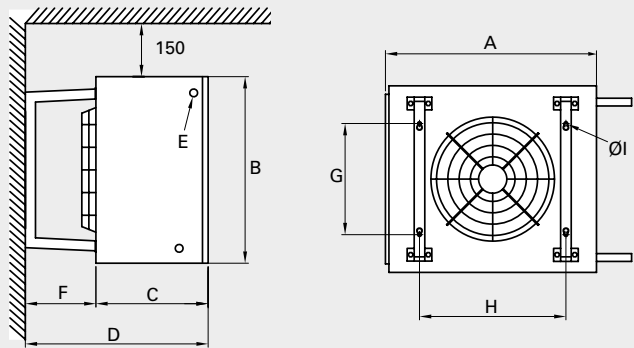
Email: [info@adremit.co.uk](mailto:info@adremit.co.uk)

## Our Address

Puravent, Adremit Limited, Unit 5a, Commercial Yard,  
Settle, North Yorkshire, BD24 9RH



Dimensions



[mm]	A	B	C	D	E	F	G	H	ØI
SWXEX12	550	530	380	630	22	250	330	410	10
SWXEX22	705	655	430	700	22	270	420	505	10



Control options

Control by thermostat only  
The thermostat starts/stops the fan and also controls the heat supply on/off. The fan is set to run on high speed.  
Complete regulation kit:

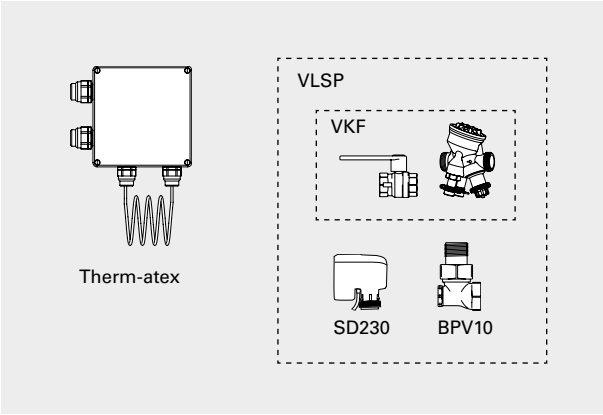
- Therm-atex, ATEX capillary tube thermostat
- VLSP, pressure independent valve system on/off

Control

Therm-atex, ATEX capillary tube thermostat  
Capillary tube thermostat with concealed knob for ATEX zones 1 and 2. Setting range -20 - +40 °C. Max. breaking current: 16 (2.5)A, cos φ = 1(0.6), AC 230V. IP66.

VLSP, pressure independent valve system on/off  
The valve system VLSP consists of the following:

- VKF, valve kit
  - TAC, pressure independent regulation and adjustment valve
  - AV, shut off valve
- SD230, actuator on/off 230V
- BPV10, bypass valve



Type	Description	HxWxD [mm]
Therm-atex	ATEX capillary tube thermostat for zones 1 and 2, IP66	215x154x90
VKF20*	Valve kit DN20	
VKF25*	Valve kit DN25	
SD230*	Actuator on/off 230V	
BPV10*	Bypass valve	

\*) Only for mounting outside ATEX-classed zones.

Get In Touch

Call: 0845 6880112  
Email: [info@adremit.co.uk](mailto:info@adremit.co.uk)

Our Address

Puravent, Adremit Limited, Unit 5a, Commercial Yard, Settle, North Yorkshire, BD24 9RH