

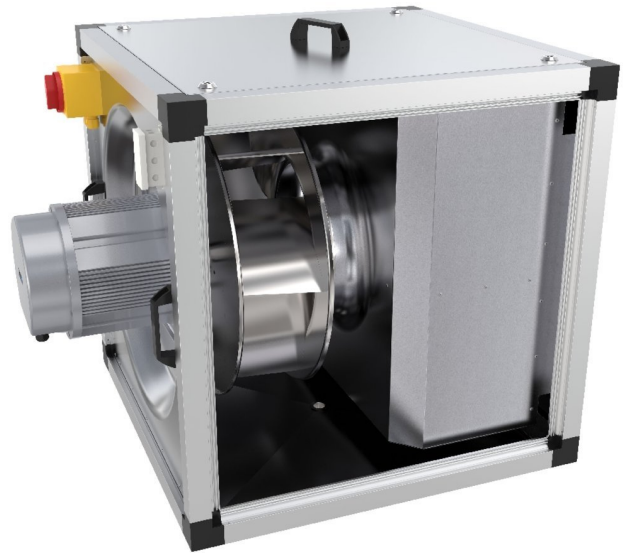
MUB/T-S 025 315EC Poti

Centrifugal box fan, 120°C continuous, insulated

Item Number: 235413

Variant: 230V 1~ 50/60Hz

- EC-motors, high level of efficiency
- Inline airflow direction
- Up to 120°C medium temperature, continuous operation
- use, e.g. for kitchen exhaust air
- Pre-mounted REV-switch is standard
- Low sound level
- 100% speed controllable
- Easy to maintain and reliable
- Motor outside the air stream
- Potentiometer included for ease of commissioning



EC technology is intelligent technology; using integral electronic control which eliminates the slip losses in the motor and ensures that the motor always runs at optimal load and guarantees that the proportion of energy utilized effectively is many times higher and the energy usage considerably lower compared with AC motors. EC fans are notable for their economical use of energy and excellent ease of control. They can be varied in speed to match the airflow demand, and operate at high efficiency levels. For the same air volume, they consume distinctly less energy than AC fan drives.

Another special feature of EC fans is their energy-saving potential not only at full load, but especially at part-load. When operating at part load, the energy used is much lower than with an asynchronous motor of equivalent output. Reduced energy usage guarantees a drop in operating costs. The power electronics are integrated in the motor housing.

All models have one potential-free terminal for error message. All motors are suitable to be used for 50/60Hz. The input voltage for single phase units can vary between 200 and 277V, for three phase units it can vary between 380 and 480V. Speed control by a 0-10V signal.

All MUB/T-S fans have new optimized and high efficient HD impellers with backward curved blades, manufactured from aluminium.

The casing consists of an aluminium frame with fibreglass reinforced plastic corners and double skin, galvanised steel panels with a 30 mm mineral wool insulation and a quick lock access door. The MUB/T-S bottom panel is a drain tray and incorporates a pre-mounted 1" drain plug. An additional pre-wired isolator switch is mounted on the casing.


Technical parameters

Nominal data		
Voltage (nominal)	230	V
Frequency	50; 60	Hz
Phases	1~	
Input power	178	W
Input current	0.79	A
Impeller speed	1,510	rpm
Air flow	max 0.581	m³/s
Temperature of transported air	max 120	°C
Max temperature of transported air, when speed controlled	120	°C
Protection/Classification		
Enclosure class, motor	IP55	
Insulation class	B	

Article name: MUB/T-S 025 315EC Poti | Product link: <https://shop.systemair.com/en-GB/productPermalink?p=522935> | Item Number: 235413 | Variant: 230V 1~ 50/60Hz | Document type: Product card | Created at: 03.11.2022 | Generated by: Systemair Online Catalogue | Language: English

Page 1 of 5

Get In Touch

 Call: 0845 6880112
 Email: info@adremit.co.uk

Our Address

Puravent, Adremit Limited, Unit 5a, Commercial Yard,
 Settle, North Yorkshire, BD24 9RH

Data according to ErP

ErP ready

Not ErP relevant

Dimensions and weights

Weight

38.5 kg

Others

Motor type

EC

Get In Touch



Call: [0845 6880112](tel:08456880112)



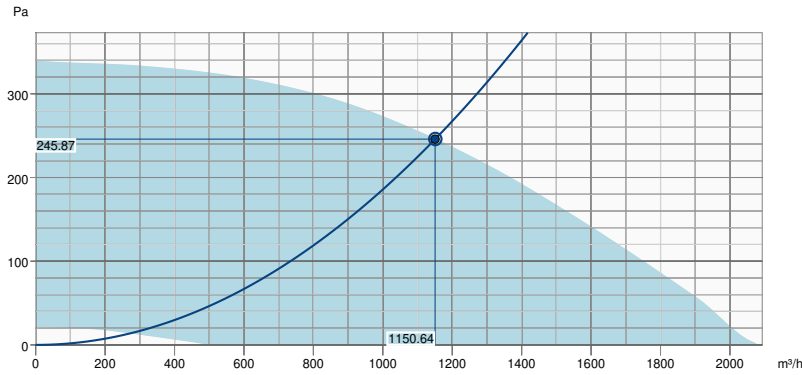
Email: info@adremit.co.uk

Our Address

Puravent, Adremit Limited, Unit 5a, Commercial Yard,
Settle, North Yorkshire, BD24 9RH

Performance

Performance curve



Hydraulic data

Required air flow	1151.17 m³/h
Required static pressure	246 Pa
Working air flow	1150.64 m³/h
Working static pressure	246 Pa
Air density	1.204 kg/m³
Power	175.3 W
Fan control - RPM	1513 rpm
Current	0.81 A
SFP	0.548 kW/m³/s
Control voltage	10.0 V
Supply voltage	230 V

Sound power level		63	125	250	500	1k	2k	4k	8k	Total
Inlet	dB(A)	34	52	67	69	69	67	63	57	74
Outlet	dB(A)	35	53	69	70	70	68	65	59	76
Surrounding	dB(A)	11	31	41	36	37	38	29	20	45
Sound pressure level at 3m (20m² Sabine)	dB(A)	-	-	-	-	-	-	-	-	38
Sound pressure level at 3m free field	dB(A)	-	-	-	-	-	-	-	-	24

Article name: MUB/T-S 025 315EC Poti | Product link: <https://shop.systemair.com/en-GB/productPermalink?p=522935> | Item Number: 235413 | Variant: 230V 1~ 50/60Hz | Document type: Product card | Created at: 03.11.2022 | Generated by: Systemair Online Catalogue | Language: English

Get In Touch

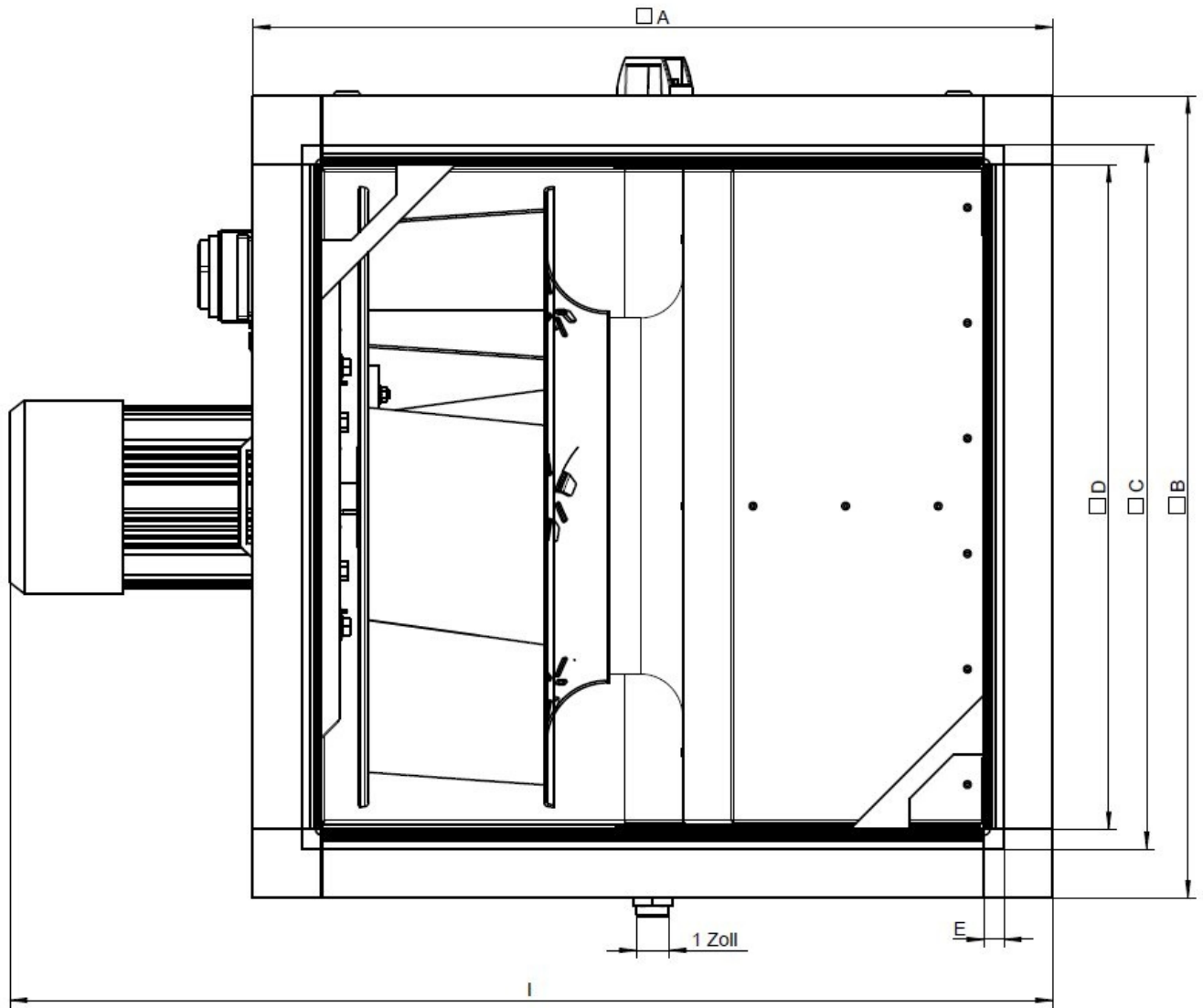
 Call: 0845 6880112
 Email: info@adremit.co.uk

Our Address

Puravent, Adremit Limited, Unit 5a, Commercial Yard, Settle, North Yorkshire, BD24 9RH

Dimension

MUB/T-S 025	□A	□B	□C	□D	E	I
315EC	520	520	420	378	21	676



Article name: MUB/T-S 025 315EC Poti | Product link: <https://shop.systemair.com/en-GB/productPermalink?p=522935> | Item Number: 235413 | Variant: 230V 1~ 50/60Hz
| Document type: Product card | Created at: 03.11.2022 | Generated by: Systemair Online Catalogue | Language: English

Page 4 of 5

Get In Touch



Call: [0845 6880112](tel:08456880112)



Email: info@adremit.co.uk

Our Address

Puravent, Adremit Limited, Unit 5a, Commercial Yard,
Settle, North Yorkshire, BD24 9RH

Accessories

- CXE/AVC Modbus (37256)
- EC-Basic-H humidity (24807)
- EC-Basic-U universal 0-10V (24806)
- EC-Vent Room Unit (3018)
- MTP 10, 10K, Speed control (32731)
- Potentiometer MTP 20, 0-10V (310220)
- Step switch S-5EC, 0-10V (76738)
- UGS 025/315 adapter flex 120°C (38364)
- WSD 025 (560x560x70) complete (31480)
- WSG 025 MUB/T complete (36070)
- HR1 Room Humidistat (215150)
- RT 0-30 Room Thermostat (5151)
- CCM outlet MUB025 d355 (312719)
- CCMI outlet 025 d355 KIT 30mm (239092)
- KKF 30 025-filter-section (93310)
- KKS 025 silencer-section (276850)
- EC-Basic-CO2 and temperature (24808)
- EC-Basic-T temperature (24805)
- EC-Vent control board (3115)
- FGV 025/416-416 flex. conn. (4196)
- MTV-1/010 Controller 0..10V+ (30650)
- SD-MUB Vibration pad set (37324)
- TUNE-AHU-DE006-025-418x418-M0 (79880)
- UGS 025/355 adapter flex. (4356)
- WSD MUB/T-S short (37497)
- FGV 025/416-416 flex. 120°C (38360)
- Presence detector/IR24-P (6995)
- CCM outlet MUB025 d315 (312535)
- CCMI outlet 025 d315 KIT 30mm (239091)
- GRU 025 base frame h= 100mm (276660)
- KKF-ALU 025-filter-section (376814)

Documents

- Installation, Operation and Maintenance instruction_001
- UKCA DECLARATION OF CONFORMITY_THERMOFANS_EN_002.PDF
- COMMISSIONING REPORT_FANS_160628_EN_001.PDF
- WIRING_M3G 084-GF08-82, 0,039KW_170222_DE,EN_003_313885.PDF

Get In Touch

- 📞 Call: 0845 6880112
- ✉ Email: info@adremmit.co.uk

Our Address

Puravent, Adremmit Limited, Unit 5a, Commercial Yard,
Settle, North Yorkshire, BD24 9RH