



# RS 80-50 M3 SILEO

Item no. 39633

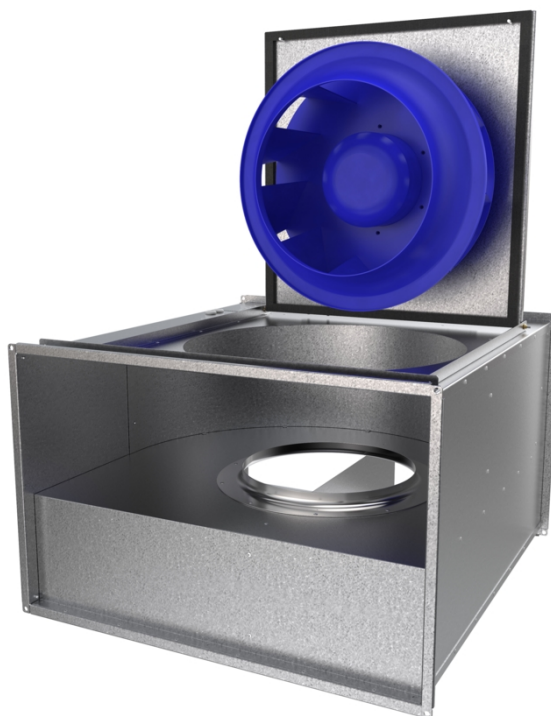
Version: 50 Hz; 400V 3~



## Description

- Speed-controllable
- Integral thermal contacts
- Can be installed in any position
- Maintenance-free and reliable

The RS models have impellers with backward-curved blades and external rotor motors. The motor and impeller are mounted on the access cover to facilitate easy maintenance. To protect the motor from overheating the RS has integral thermal contacts with external leads for connection to a motor protection device. The fan can be installed in any position and is easy to connect using the DS flexible connections. The casing is manufactured from galvanised sheet steel.



## Technical parameters

| Nominal data  |             |
|---|-------------|
| Voltage   | 400 V       |
| Frequency   | 50 Hz       |
| Phase   | 3 ~         |
| Input power (P1)  | 886 W       |
| Current   | 1,82 A      |
| Max. airflow  | 1,96 m³/s   |
| R.p.m.  | 1399 r.p.m. |
| Weight  | 61,6 kg     |
| Temperature data  |             |
| Max. temperature of transported air                       | 70 °C       |
| Max. temperature of transported air when speed-controlled | 70 °C       |
| Sound data  |             |
| Sound pressure level at 3 m                               | 61,3 dB(A)  |

### Get In Touch

Call: [0845 6880112](tel:08456880112)  
 Email: [info@adremit.co.uk](mailto:info@adremit.co.uk)

### Our Address

Puravent, Adremit Limited, Unit 5a, Commercial Yard,  
 Settle, North Yorkshire, BD24 9RH



### Protection / Classification

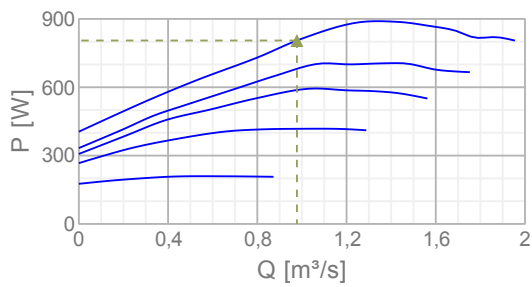
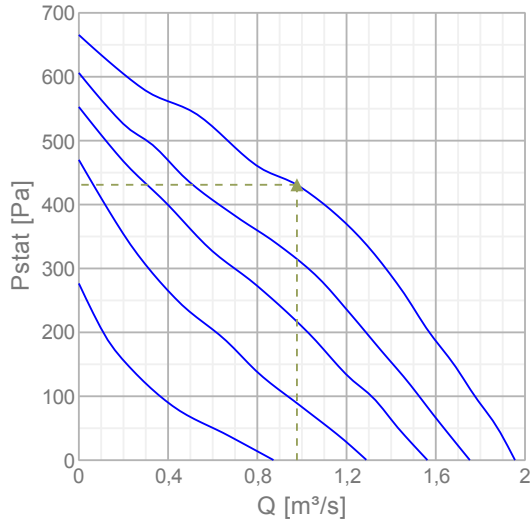
|                        |      |
|------------------------|------|
| Insulation class       | F    |
| Enclosure class, motor | IP54 |

### ErP

|           |          |
|-----------|----------|
| ErP ready | ErP 2018 |
|-----------|----------|

## Diagrams

### Diagrams



### Max efficiency

| Hydraulic data            |               |    |     |     |     |    |    |    |    |     |
|---------------------------|---------------|----|-----|-----|-----|----|----|----|----|-----|
| ▲ Working air flow        | 0,978 m³/s    |    |     |     |     |    |    |    |    |     |
| ▲ Working static pressure | 431 Pa        |    |     |     |     |    |    |    |    |     |
| ▲ Power                   | 805 W         |    |     |     |     |    |    |    |    |     |
| Speed                     | 1412 r.p.m.   |    |     |     |     |    |    |    |    |     |
| Current                   | 1,73 A        |    |     |     |     |    |    |    |    |     |
| SFP                       | 0,824 W/(l/s) |    |     |     |     |    |    |    |    |     |
| Voltage                   | 400 V         |    |     |     |     |    |    |    |    |     |
| Sound power level         |               | 63 | 125 | 250 | 500 | 1k | 2k | 4k | 8k | Tot |
| Inlet                     | dB(A)         | 59 | 73  | 68  | 70  | 69 | 68 | 64 | 57 | 77  |
| Outlet                    | dB(A)         | 61 | 77  | 73  | 74  | 75 | 71 | 66 | 58 | 82  |
| Surrounding               | dB(A)         | 43 | 66  | 60  | 57  | 57 | 57 | 54 | 47 | 68  |

Name: **RS 80-50 M3 SILEO** | Item no.: **39633** | Version: **50 Hz; 400V 3~**

Document type: **Product card** | Document date: **2019-06-25** | Generated by: **Online catalogue**

2 / 4

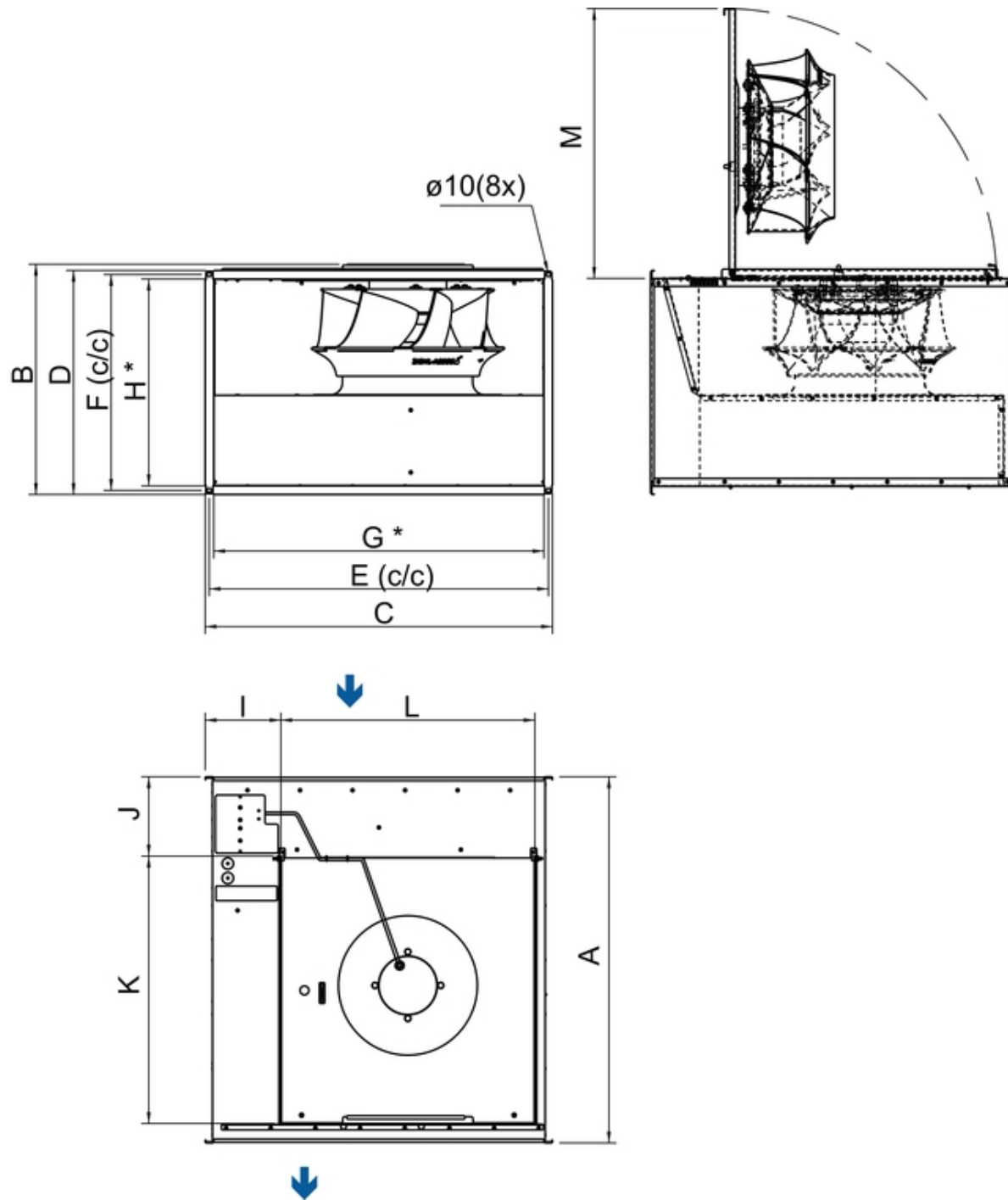
### Get In Touch

 **Call:** 0845 6880112  
 **Email:** [info@adremit.co.uk](mailto:info@adremit.co.uk)

### Our Address

Puravent, Adremit Limited, Unit 5a, Commercial Yard, Settle, North Yorkshire, BD24 9RH

## Dimensions



| RS    | A   | B   | C   | D   | E   | F   | G   | H   | I     | J   | K   | L   | M   |
|-------|-----|-----|-----|-----|-----|-----|-----|-----|-------|-----|-----|-----|-----|
| 80-50 | 882 | 560 | 840 | 541 | 820 | 520 | 798 | 498 | 182,5 | 190 | 614 | 644 | 650 |

Name: **RS 80-50 M3 SILEO** | Item no.: **39633** | Version: **50 Hz; 400V 3~**

Document type: **Product card** | Document date: **2019-06-25** | Generated by: **Online catalogue**

### Get In Touch

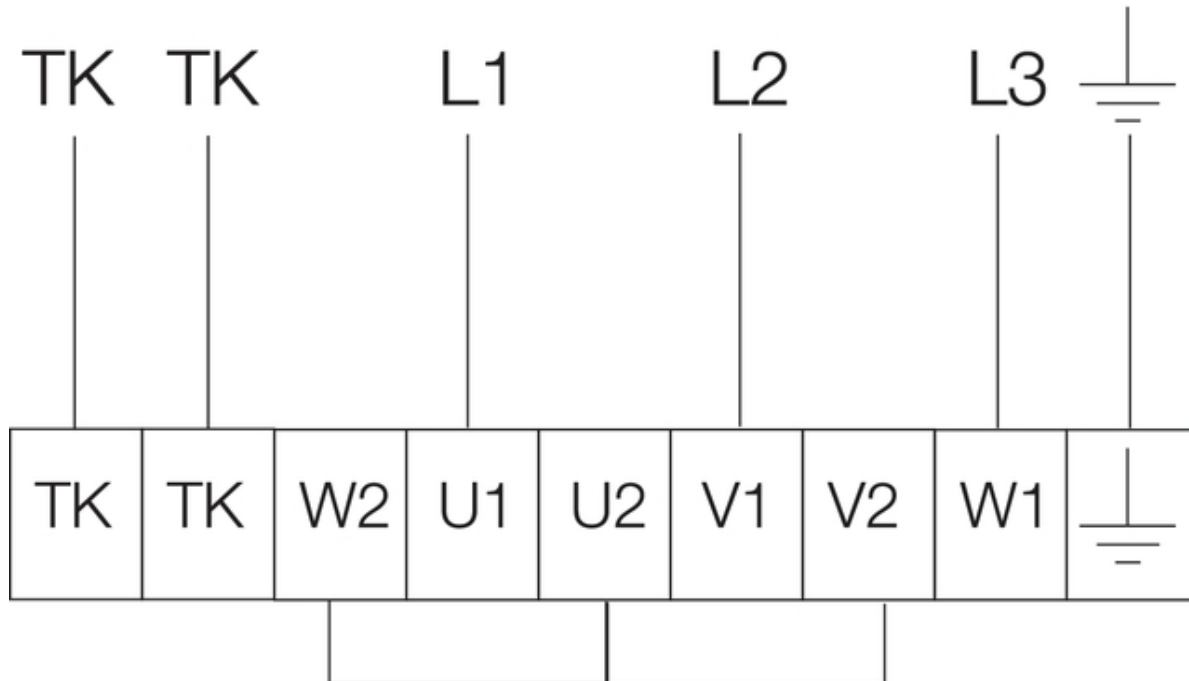
Call: [0845 6880112](tel:08456880112)  
 Email: [info@adremit.co.uk](mailto:info@adremit.co.uk)

### Our Address

Puravent, Adremit Limited, Unit 5a, Commercial Yard,  
 Settle, North Yorkshire, BD24 9RH

## Wiring

# 400V 3~



### Accessories


#### Electric accessories

- [RTRD 4 Speed cont. Systemair \(5942\)](#)
- [RTRDU 4 Speed contr. Systemair \(5946\)](#)
- [RT 0-30 Room Thermostat \(5151\)](#)
- [STDT 16 Motor Protection \(5152\)](#)
- [STDT 16E Motor Protection \(5153\)](#)
- [CO2RT-R-D Transmitter \(6993\)](#)
- [Presence detector/IR24-P \(6995\)](#)
- [DTV200 \(6261\)](#)
- [REV-5POL/07 ON/OFF \(33980\)](#)
- [DTV500A \(96807\)](#)

#### Accessories

- [PGK 80-50-3-2,0 Duct cooler \(6619\)](#)
- [VBR 80-50-2 Water heating batt \(5469\)](#)
- [VBR 80-50-3 Water heating batt \(5477\)](#)
- [LDR 80-50 Silencer \(5075\)](#)
- [FFK 80-50 filter cassette \(30236\)](#)
- [DS 80-50 Flexible connection \(1553\)](#)
- [GFL 80-50 Counter flange \(2711\)](#)
- [VK-80-50 Louvre shutter \(5655\)](#)
- [DXRE 80-50-3-2,5 Duct cooler \(7958\)](#)
- [RB 80-50/45-3 400V/3 Duct heat \(9647\)](#)
- [RB 80-50/68-4 400V/3 Duct heat \(9648\)](#)
- [RKT-SYS-800x500-S \(43639\)](#)
- [RK-SYS-800x500-R \(43649\)](#)
- [RK-SYS-800x500-S \(43658\)](#)

### Documentation

 [202341\\_Fans\\_Instructions\\_CE\\_A010.pdf \(1,83MB\)](#)

Name: **RS 80-50 M3 SILEO** | Item no.: **39633** | Version: **50 Hz; 400V 3~**

Document type: **Product card** | Document date: **2019-06-25** | Generated by: **Online catalogue**

4 / 4

### Get In Touch

 **Call:** [0845 6880112](tel:08456880112)  
 **Email:** [info@adremmit.co.uk](mailto:info@adremmit.co.uk)

### Our Address

Puravent, Adremmit Limited, Unit 5a, Commercial Yard,  
Settle, North Yorkshire, BD24 9RH