



RS 60-35 EC SILEO

Item no. 77064



Description

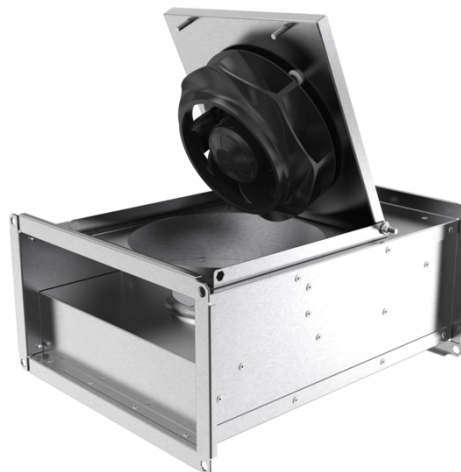
- EC-motors, high level of efficiency
- 100% speed controllable
- Integrated motor protection
- Can be installed in any position
- Potentiometer included for easy commissioning

The RSI models are thermally and acoustically insulated with 50mm mineral wool and perforated sheet steel on the inner surface. This gives a quiet running with many installation possibilities.

The RS/RSI EC series have impellers with backward-curved blades and are fitted to EC external rotor motors. These fans have a high capacity in relation to their compact design. The fans are delivered with a pre-wired potentiometer (0-10V) which allows you to easily find the desired working point.

EC fans are notable for their economical use of energy and excellent ease of control. They can be varied in speed to match the airflow demand, and operate at high efficiency levels. For the same air volume, they consume distinctly less energy than AC fan drives.

Motor protection is integrated in the electronics of the motor. The casing is manufactured from galvanized sheet steel.



Technical parameters

| Nominal data | |
|---|-------------|
| Voltage | 230 V |
| Frequency | 50 Hz |
| Phase | 1 ~ |
| Input power (P1) | 524 W |
| Current | 2,29 A |
| Max. airflow | 1,22 m³/s |
| R.p.m. | 1941 r.p.m. |
| Weight | 25,8 kg |
| Temperature data | |
| Max. temperature of transported air | 60 °C |
| Max. temperature of transported air when speed-controlled | 60 °C |
| Sound data | |
| Sound pressure level at 3 m | 57,6 dB(A) |
| Protection / Classification | |
| Insulation class | F |
| Enclosure class, motor | IP55 |

Get In Touch

Call: [0845 6880112](tel:08456880112)
 Email: info@adremit.co.uk

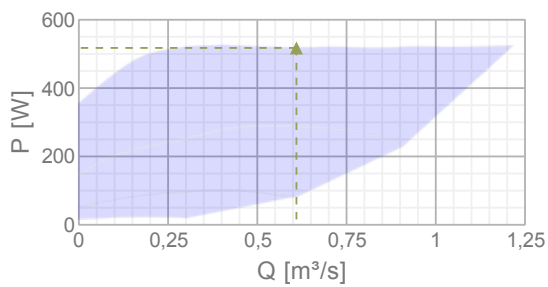
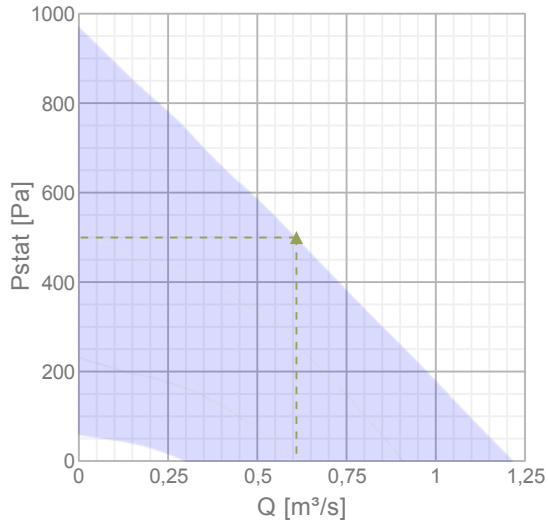
Our Address

Puravent, Adremit Limited, Unit 5a, Commercial Yard,
 Settle, North Yorkshire, BD24 9RH



Diagrams

Diagrams



Max efficiency

| Hydraulic data | | | | | | | | | | | |
|---------------------------|-------|--|----|-----|-----|-----|----|----|----|------------------------|-----|
| ▲ Working air flow | | | | | | | | | | 0,61 m ³ /s | |
| ▲ Working static pressure | | | | | | | | | | 500 Pa | |
| ▲ Power | | | | | | | | | | 518 W | |
| Speed | | | | | | | | | | 1848 r.p.m. | |
| Current | | | | | | | | | | 2,26 A | |
| SFP | | | | | | | | | | 0,849 W/(l/s) | |
| Voltage | | | | | | | | | | 230 V | |
| Sound power level | | | 63 | 125 | 250 | 500 | 1k | 2k | 4k | 8k | Tot |
| Inlet | dB(A) | | 53 | 67 | 69 | 69 | 65 | 64 | 60 | 54 | 75 |
| Outlet | dB(A) | | 54 | 69 | 74 | 74 | 74 | 69 | 63 | 56 | 80 |
| Surrounding | dB(A) | | 34 | 56 | 61 | 58 | 57 | 49 | 48 | 41 | 65 |

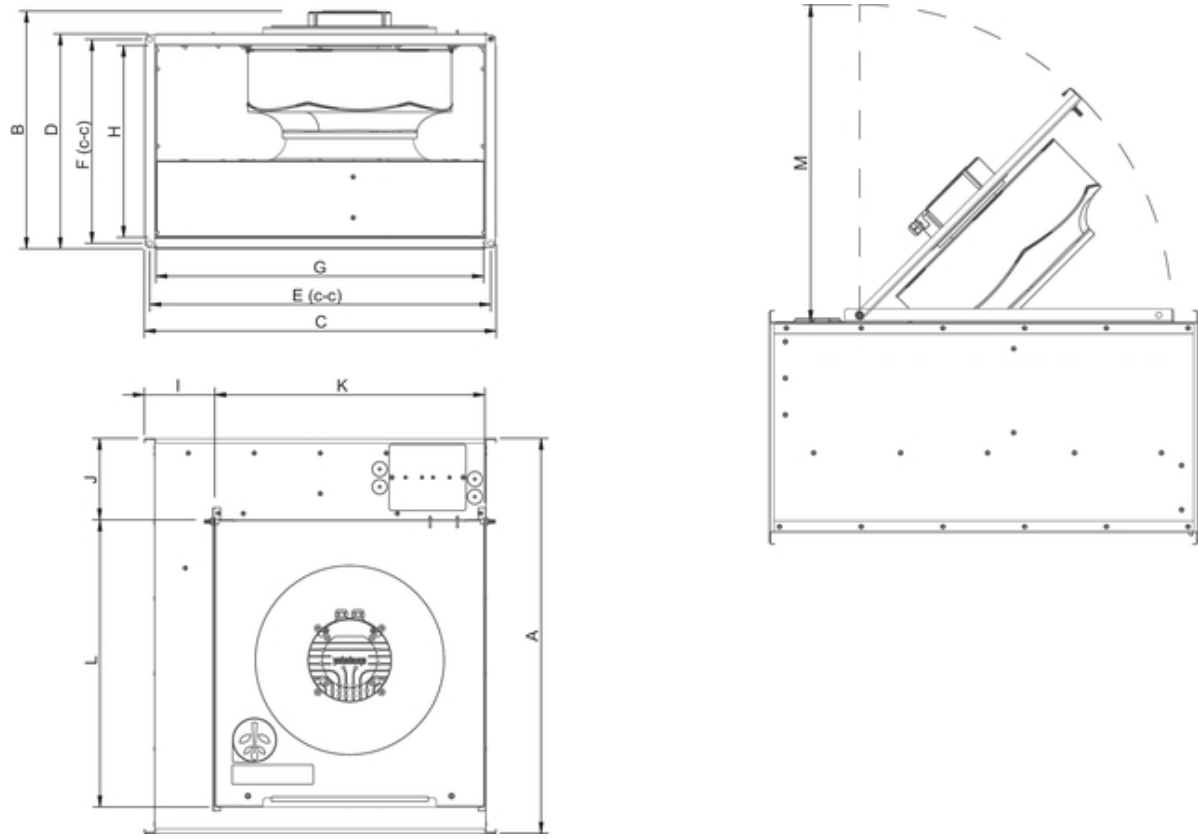
Get In Touch

Call: [0845 6880112](tel:08456880112)Email: info@adremit.co.uk

Our Address

Puravent, Adremit Limited, Unit 5a, Commercial Yard,
Settle, North Yorkshire, BD24 9RH

Dimensions





| | A | B | C | D | E | F | G | H | I | J | K | L | M |
|-------------|-----|-----|-----|-----|-----|-----|-----|-----|-----|-----|-----|-----|-----|
| RS 60-35 EC | 717 | 431 | 640 | 390 | 620 | 370 | 598 | 348 | 109 | 147 | 491 | 521 | 530 |

Name: **RS 60-35 EC SILEO** | Item no.: **77064**

Document type: **Product card** | Document date: **2019-06-25** | Generated by: **Online catalogue**

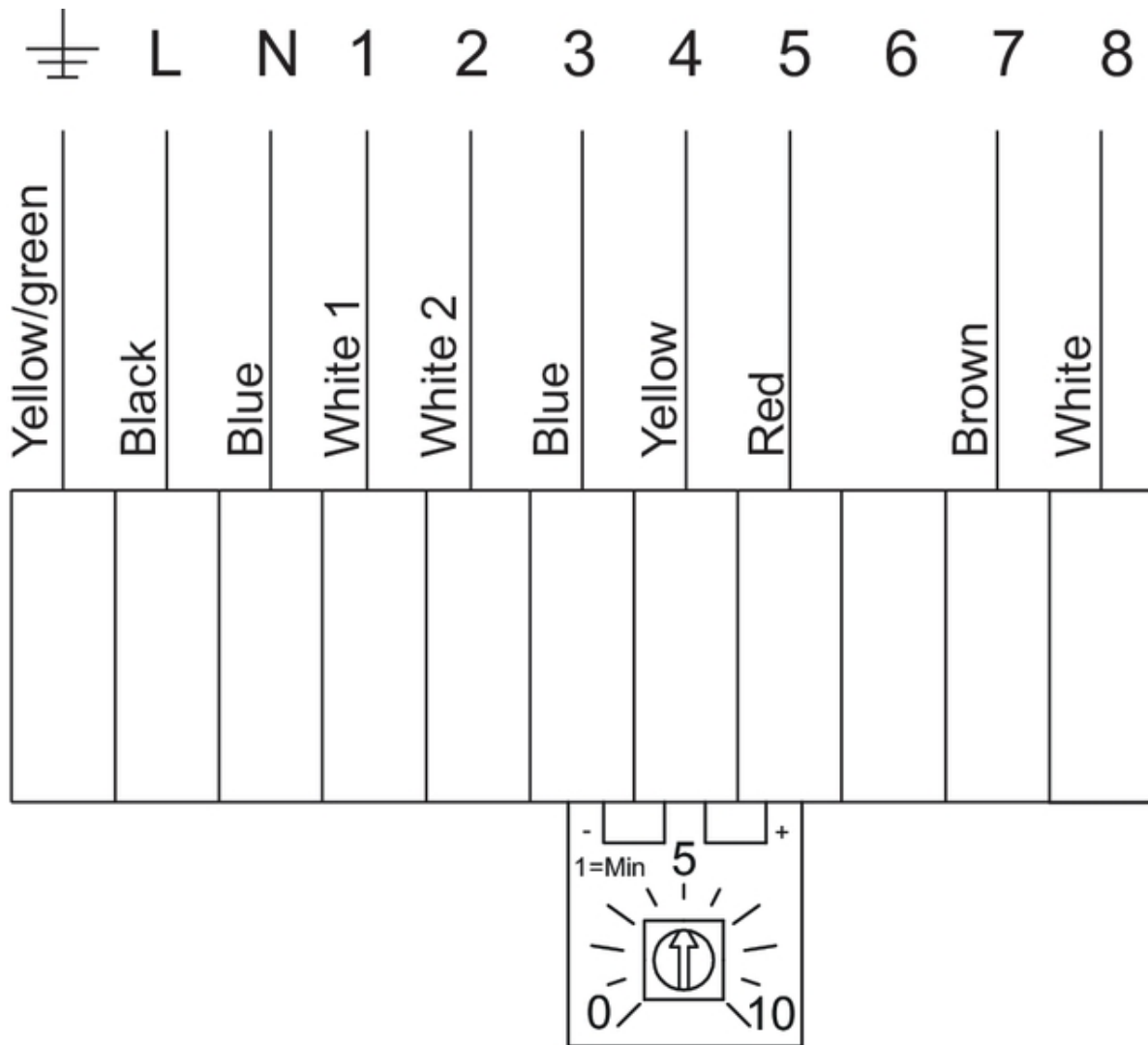
Get In Touch

 **Call:** [0845 6880112](tel:08456880112)
 **Email:** info@adremit.co.uk

Our Address

Puravent, Adremit Limited, Unit 5a, Commercial Yard,
Settle, North Yorkshire, BD24 9RH

Wiring



| Terminal | Cable | Description |
|----------|---------|---------------------------|
| 1 | White 1 | Alarm NC |
| 2 | White 2 | Alarm COM |
| 3 | Blue | GND |
| 4 | Yellow | Control input 0-10VDC |
| 5 | Red | Output 10VDC max 10 mA |
| 6 | | |
| 7 | Brown | Interface for Modbus, RSB |
| 8 | White | Interface for Modbus, RSA |

Accessories

Electric accessories

- [RT 0-30 Room Thermostat \(5151\)](#)
- [CO2RT-R-D Transmitter \(6993\)](#)
- [Presence detector/IR24-P \(6995\)](#)
- [MTV-1/010 Controller 0..10V+ \(30650\)](#)
- [MTP 10, 10K, Speed control \(32731\)](#)
- [DTV200 \(6261\)](#)
- [EC-Vent Room Unit \(3018\)](#)
- [EC-Vent control board \(3115\)](#)
- [REV-5POL/05 ON/OFF \(33979\)](#)
- [MTP 20, on/off, 3-step \(310220\)](#)
- [EC-Basic-H humidity \(24807\)](#)
- [EC-Basic-T temperature \(24805\)](#)
- [EC-Basic-U universal 0-10V \(24806\)](#)
- [EC-Basic-CO2 and temperature \(24808\)](#)
- [S-5EC/FRQ \(76738\)](#)
- [DTV500A \(96807\)](#)

Name: **RS 60-35 EC SILEO** | Item no.: **77064**

Document type: **Product card** | Document date: **2019-06-25** | Generated by: **Online catalogue**

4 / 5

Get In Touch

Call: [0845 6880112](tel:08456880112)
 Email: info@adremit.co.uk




Our Address

Puravent, Adremit Limited, Unit 5a, Commercial Yard,
 Settle, North Yorkshire, BD24 9RH

Accessories

[RBM 60-35/27 400V/3 Duct heater \(5454\)](#)
[PGK 60-35-3-2,0 Duct cooler \(6612\)](#)
[VBR 60-35-2 Water heating batt \(5467\)](#)
[VBR 60-35-4 Water heating batt \(5475\)](#)
[LDR 60-35 Silencer \(5073\)](#)
[FFK 60-35 Filter cassette rect \(1761\)](#)
[DS 60-35 Flexible connection \(1549\)](#)
[GFL 60-35 Counter flange \(2709\)](#)
[VK-60-35 Louvre shutter \(5650\)](#)
[DXRE 60-35-3-2,5 Duct cooler \(7956\)](#)
[RB 60-35/27-2 400V/3 Duct heat \(9643\)](#)
[RB 60-35/45-3 400V/3 Duct heat \(9644\)](#)
[RKT-SYS-600x350-S \(43633\)](#)
[RK-SYS-600x350-S \(43656\)](#)

Documentation

-  [202341_Fans_Instructions_CE_A010.pdf \(1,83MB\)](#)
-  [EC-fans_Operation_and_maintenance_instr_206268_CE_\(A022\).pdf \(2,88MB\)](#)
-  [MODBUS LITE V5.01 parameter specification.pdf \(726,08kB\)](#)

Specification text

Rectangular duct fan for easy and direct installation in ducts. For extract and supply air installations. Galvanized sheet steel housing. Service cover. The fan unit is mounted on the service cover for easy cleaning and maintenance. Free-running, backward curved circular impeller made of composite PA6. Impeller acc. to VDI 2060, balancing quality G 6.3, dynamically balanced in two planes. EC-external rotor motor, maintenance-free, the motor is placed inside the air flow for cooling. Integrated, electronic motor protection. Integrated speed controller, the fan is equipped with a potentiometer (0-10V) to set the operating point directly. Integrated, electronic motor protection. Installation in any mounting position. For indoor installation.

Get In Touch

 **Call:** [0845 6880112](tel:08456880112)
 **Email:** info@adremit.co.uk

Our Address

Puravent, Adremit Limited, Unit 5a, Commercial Yard,
Settle, North Yorkshire, BD24 9RH