



RS 50-25 SILEO

Item no. 19531

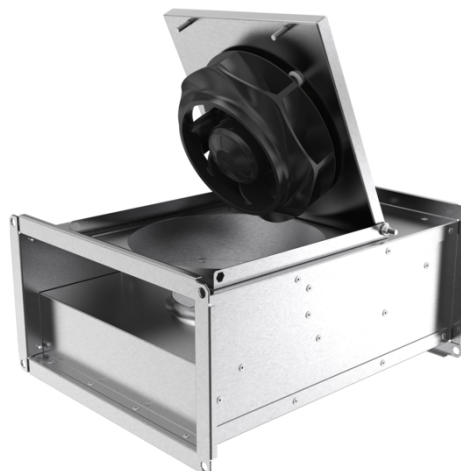
Version: 50 Hz



Description

- Speed-controllable
- Integral thermal contacts
- Can be installed in any position
- Maintenance-free and reliable

The RS models have impellers with backward-curved blades and external rotor motors. The motor and impeller are mounted on the access cover to facilitate easy maintenance. To protect the motor from overheating the fan has an integral thermal contact with electrical reset. The fans can be installed in any position and are easy to connect using the DS flexible connections. The casing is manufactured from galvanised sheet steel.



Technical parameters

| Nominal data | | |
|---|-------|--------|
| Voltage | 230 | V |
| Frequency | 50 | Hz |
| Phase | 1 | ~ |
| Input power (P1) | 129 | W |
| Current | 0,586 | A |
| Max. airflow | 0,426 | m³/s |
| R.p.m. | 1329 | r.p.m. |
| Capacitor | 4 | µF |
| Weight | 15,3 | kg |
| Temperature data | | |
| Max. temperature of transported air | 70 | °C |
| Max. temperature of transported air when speed-controlled | 70 | °C |
| Sound data | | |
| Sound pressure level at 3 m | 46,3 | dB(A) |
| Protection / Classification | | |
| Insulation class | | B |
| Enclosure class, motor | | IP44 |

Get In Touch

Call: [0845 6880112](tel:08456880112)
 Email: info@adremit.co.uk

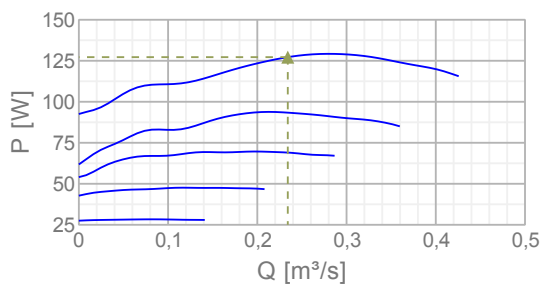
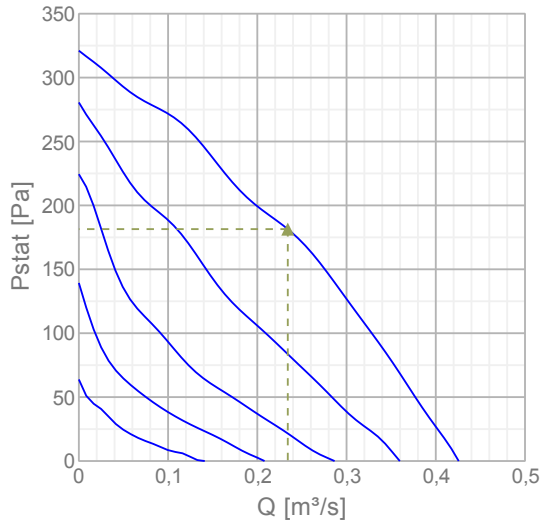
Our Address

Puravent, Adremit Limited, Unit 5a, Commercial Yard,
 Settle, North Yorkshire, BD24 9RH



Diagrams

Diagrams



Max efficiency

| Hydraulic data | | | | | | | | | | |
|---------------------------|-------|----|-----|-----|-----|----|----|----|----|---------------|
| ▲ Working air flow | | | | | | | | | | 0,234 m³/s |
| ▲ Working static pressure | | | | | | | | | | 181 Pa |
| ▲ Power | | | | | | | | | | 127 W |
| Speed | | | | | | | | | | 1332 r.p.m. |
| Current | | | | | | | | | | 0,579 A |
| SFP | | | | | | | | | | 0,543 W/(l/s) |
| Voltage | | | | | | | | | | 230 V |
| Sound power level | | 63 | 125 | 250 | 500 | 1k | 2k | 4k | 8k | Tot |
| Inlet | dB(A) | 45 | 63 | 57 | 54 | 56 | 50 | 44 | 36 | 65 |
| Outlet | dB(A) | 49 | 60 | 61 | 62 | 61 | 57 | 50 | 41 | 68 |
| Surrounding | dB(A) | 30 | 49 | 49 | 44 | 44 | 41 | 34 | 23 | 53 |

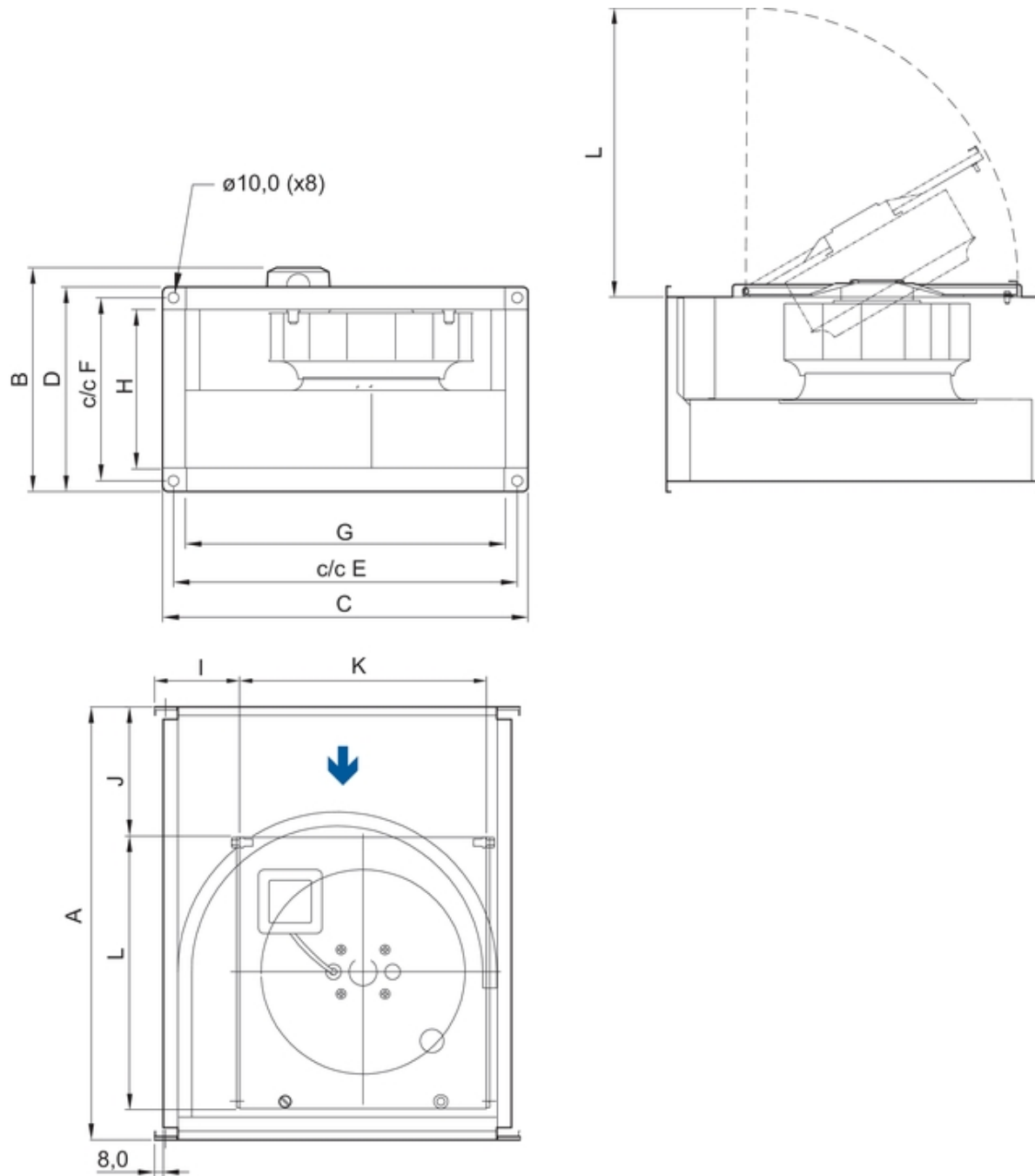
Get In Touch

Call: [0845 6880112](tel:08456880112)
 Email: info@adremit.co.uk

Our Address

Puravent, Adremit Limited, Unit 5a, Commercial Yard,
 Settle, North Yorkshire, BD24 9RH

Dimensions





| RS | A | B | C | D | E | F | G | H | I | J | K | L |
|-------|-----|-----|-----|-----|-----|-----|-----|-----|-----|------|-----|-----|
| 50-25 | 532 | 317 | 540 | 290 | 520 | 270 | 498 | 248 | 125 | 85,5 | 366 | 423 |

Name: **RS 50-25 SILEO** | Item no.: **19531** | Version: **50 Hz**

Document type: **Product card** | Document date: **2019-06-25** | Generated by: **Online catalogue**

3 / 5

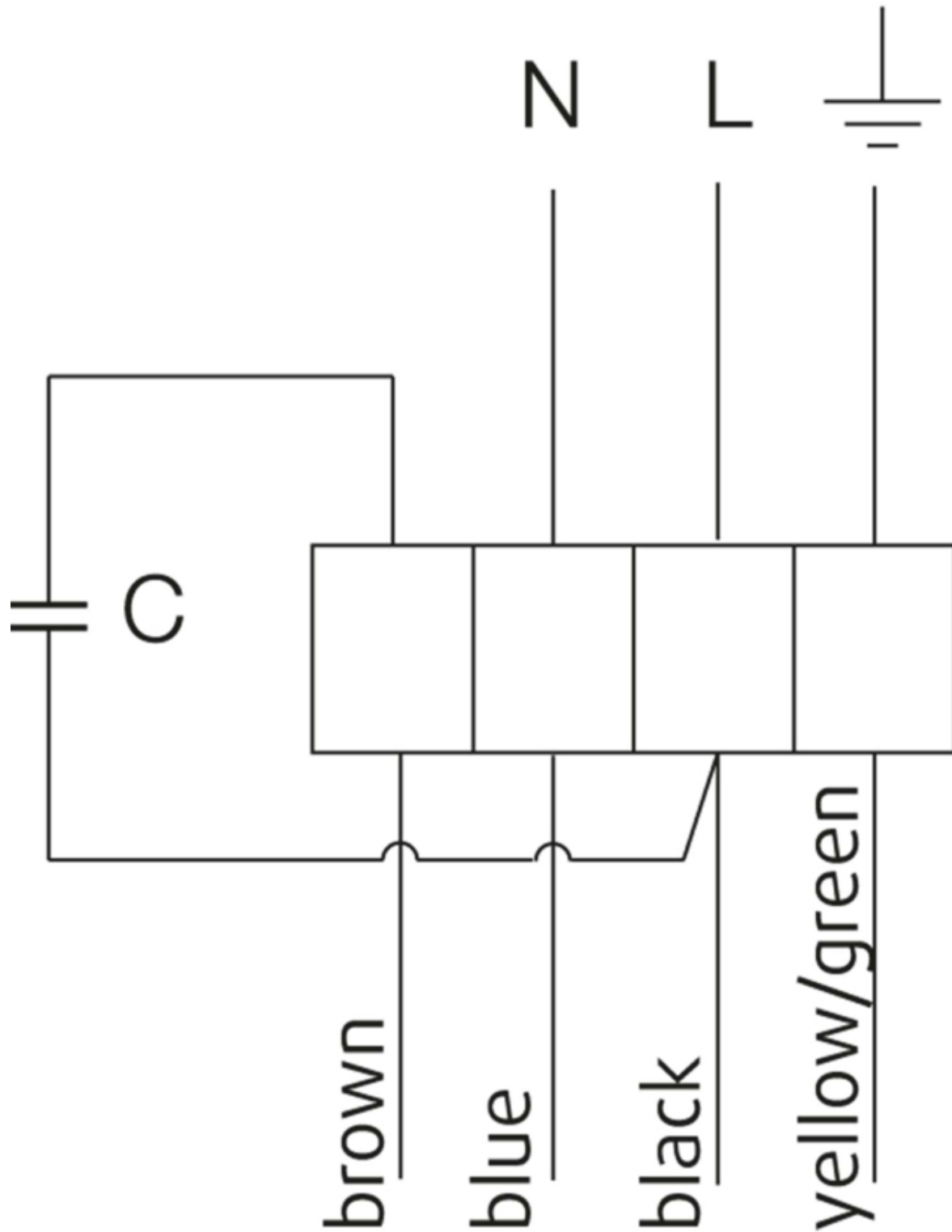
Get In Touch

 Call: [0845 6880112](tel:08456880112)
 Email: info@adremit.co.uk

Our Address

Puravent, Adremit Limited, Unit 5a, Commercial Yard,
Settle, North Yorkshire, BD24 9RH

230V 1~



U1 = blue = blau
U2 = black = schwarz
Z = brown = braun
PE = yellow/green = grün-gelb

Get In Touch

 **Call:** [0845 6880112](tel:08456880112)
 **Email:** info@adremit.co.uk

Our Address

Puravent, Adremit Limited, Unit 5a, Commercial Yard,
Settle, North Yorkshire, BD24 9RH

Accessories


Electric accessories

[RE 1.5 Speed control \(5000\)](#)
[REU 1.5 Speed control \(5004\)](#)
[REE 1 Speed control \(5314\)](#)
[REPT 6 Digital regulator \(5698\)](#)
[RT 0-30 Room Thermostat \(5151\)](#)
[CO2RT-R-D Transmitter \(6993\)](#)
[Presence detector/IR24-P \(6995\)](#)
[RETP 6 Temp/Pressure regulator \(32293\)](#)
[DTV200 \(6261\)](#)
[STL 1.5 Speed controller \(84251\)](#)
[REV-5POL/05 ON/OFF \(33979\)](#)
[FRQS-E-6A \(37419\)](#)
[FRQ5S-E-6A \(37421\)](#)
[DTV500A \(96807\)](#)

Accessories

[RBM 50-25/15 400V/3 Duct heater \(5451\)](#)
[PGK 50-25-3-2.0 Duct cooler \(6606\)](#)
[VBR 50-30-2 Water heating batt \(5465\)](#)
[VBR 50-25-4 Water heating batt \(5472\)](#)
[LDR 50-25 Silencer \(5070\)](#)
[FFK 50-25 Filter cassette rect \(1752\)](#)
[DS 50-25 Flexible connection \(1542\)](#)
[GFL 50-25 Counter flange \(2706\)](#)
[VK-50-25 Louvre shutter \(5647\)](#)
[DXRE 50-25-3-2.5 Duct cooler \(7952\)](#)
[RB 50-25/15-1 400V/3 Duct heat \(9629\)](#)
[RB 50-25/22-2 400V/3 Duct heat \(9633\)](#)
[RKT-SYS-500x250-S \(43630\)](#)
[RK-SYS-500x250-R \(43644\)](#)
[RK-SYS-500x250-S \(43653\)](#)



Documentation

 [202341_Fans_Instructions_CE_A010.pdf \(1,83MB\)](#)

Specification text

The box consists of electroplated steel plate. The fans have a radial impeller with backwards- curved impeller vanes which are pivoting. For making cleaning and attendance easier the fan device is assembled at the folding closure head. The fans can be installed in each fitting position and with the help of the flexible DS connection they are very easy to built in. The actuation is carried out by a foolproofed, maintenance- free and speed-controlled external rotor motor. For protecting the motor, the production run has built in thermal contacts with manually reset device with completed lines to a motor protection device according to EN 60335-2-80. For annealing the engine is designed inside the air flow. Impeller according to VDI 2060, quality category Q6,3 and dynamically weigh heavy in two levels.

Get In Touch

 **Call:** [0845 6880112](tel:08456880112)
 **Email:** info@adremit.co.uk

Our Address

Puravent, Adremit Limited, Unit 5a, Commercial Yard,
Settle, North Yorkshire, BD24 9RH