



RS 40-20 L SILEO

Item no. 27641

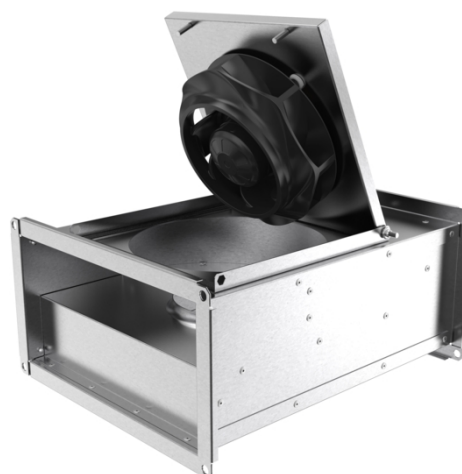
Version: 50 Hz



Description

- Speed-controllable
- Integral thermal contacts
- Can be installed in any position
- Maintenance-free and reliable

The RS models have impellers with backward-curved blades and external rotor motors. The motor and impeller are mounted on the access cover to facilitate easy maintenance. To protect the motor from overheating the fan has an integral thermal contact with electrical reset. The fans can be installed in any position and are easy to connect using the DS flexible connections. The casing is manufactured from galvanised sheet steel.



Technical parameters

Nominal data		
Voltage	230	V
Frequency	50	Hz
Phase	1	~
Input power (P1)	228	W
Current	0,996	A
Max. airflow	0,352	m³/s
R.p.m.	2754	r.p.m.
Capacitor	5	µF
Weight	12,6	kg
Temperature data		
Max. temperature of transported air	70	°C
Max. temperature of transported air when speed-controlled	70	°C
Sound data		
Sound pressure level at 3 m	53,6	dB(A)
Protection / Classification		
Insulation class		F
Enclosure class, motor		IP44

Get In Touch

Call: [0845 6880112](tel:08456880112)
 Email: info@adremit.co.uk

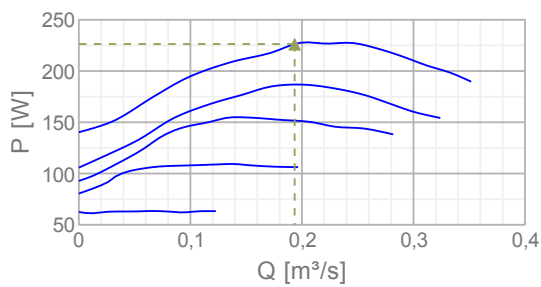
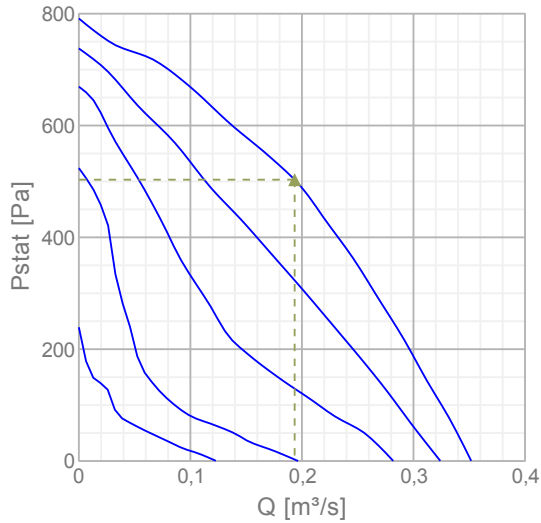
Our Address

Puravent, Adremit Limited, Unit 5a, Commercial Yard,
 Settle, North Yorkshire, BD24 9RH



Diagrams

Diagrams



Max efficiency

Hydraulic data										
▲ Working air flow										0,193 m ³ /s
▲ Working static pressure										503 Pa
▲ Power										226 W
Speed										2756 r.p.m.
Current										0,991 A
SFP										1,17 W/(l/s)
Voltage										230 V
Sound power level		63	125	250	500	1k	2k	4k	8k	Tot
Inlet	dB(A)	50	61	68	64	68	66	63	60	74
Outlet	dB(A)	51	61	70	70	71	73	67	69	78
Surrounding	dB(A)	30	37	55	53	55	54	47	44	61

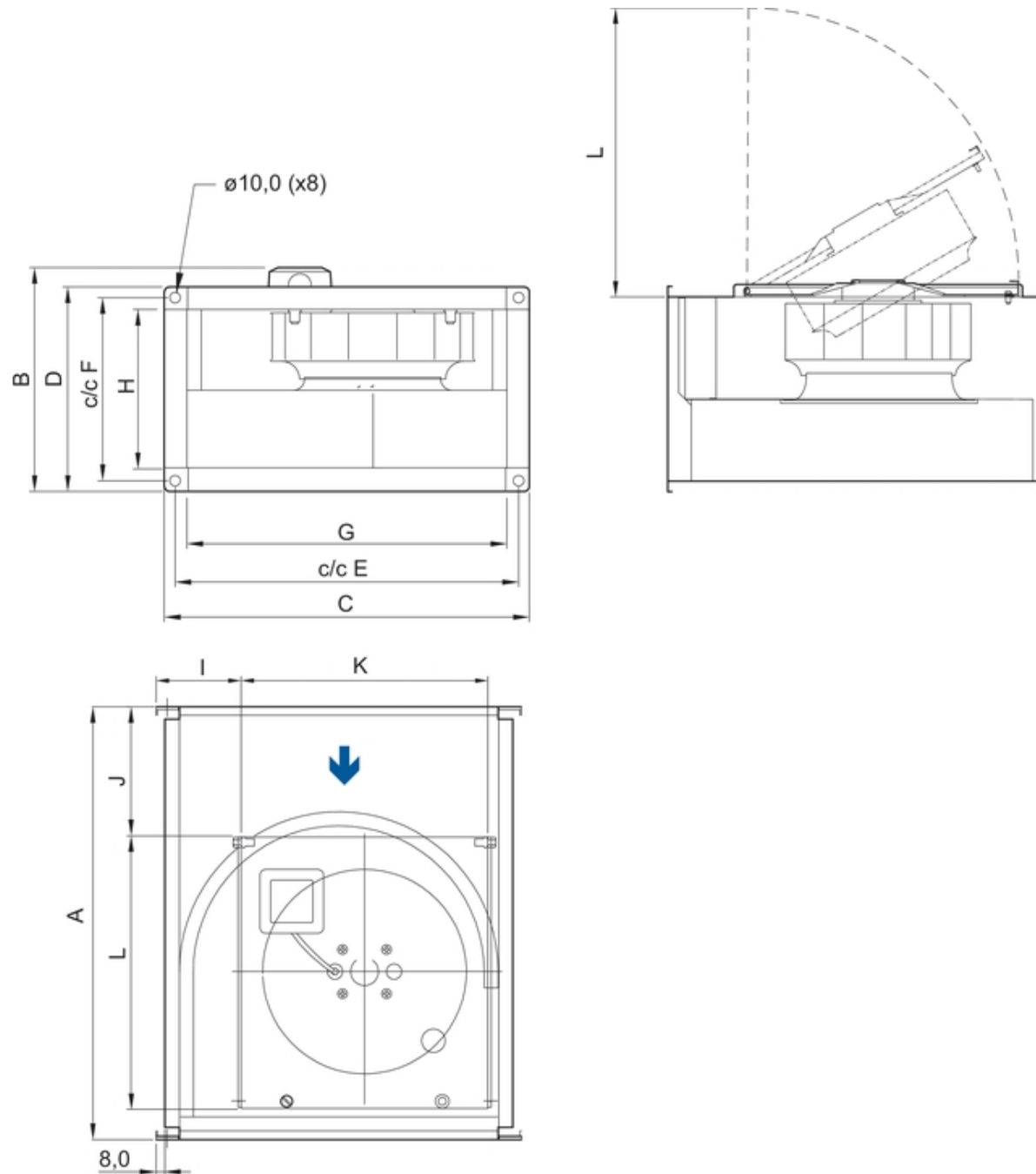
Get In Touch

Call: [0845 6880112](tel:08456880112)Email: info@adremit.co.uk

Our Address

Puravent, Adremit Limited, Unit 5a, Commercial Yard, Settle, North Yorkshire, BD24 9RH

Dimensions



RS	A	B	C	D	E	F	G	H	I	J	K	L
40-20 L	502	267	440	240	420	220	398	198	99	125	310,5	352,5

Name: **RS 40-20 L SILEO** | Item no.: **27641** | Version: **50 Hz**

Document type: **Product card** | Document date: **2019-06-25** | Generated by: **Online catalogue**

3 / 5

Get In Touch



Call: [0845 6880112](tel:08456880112)

Email: info@adremit.co.uk

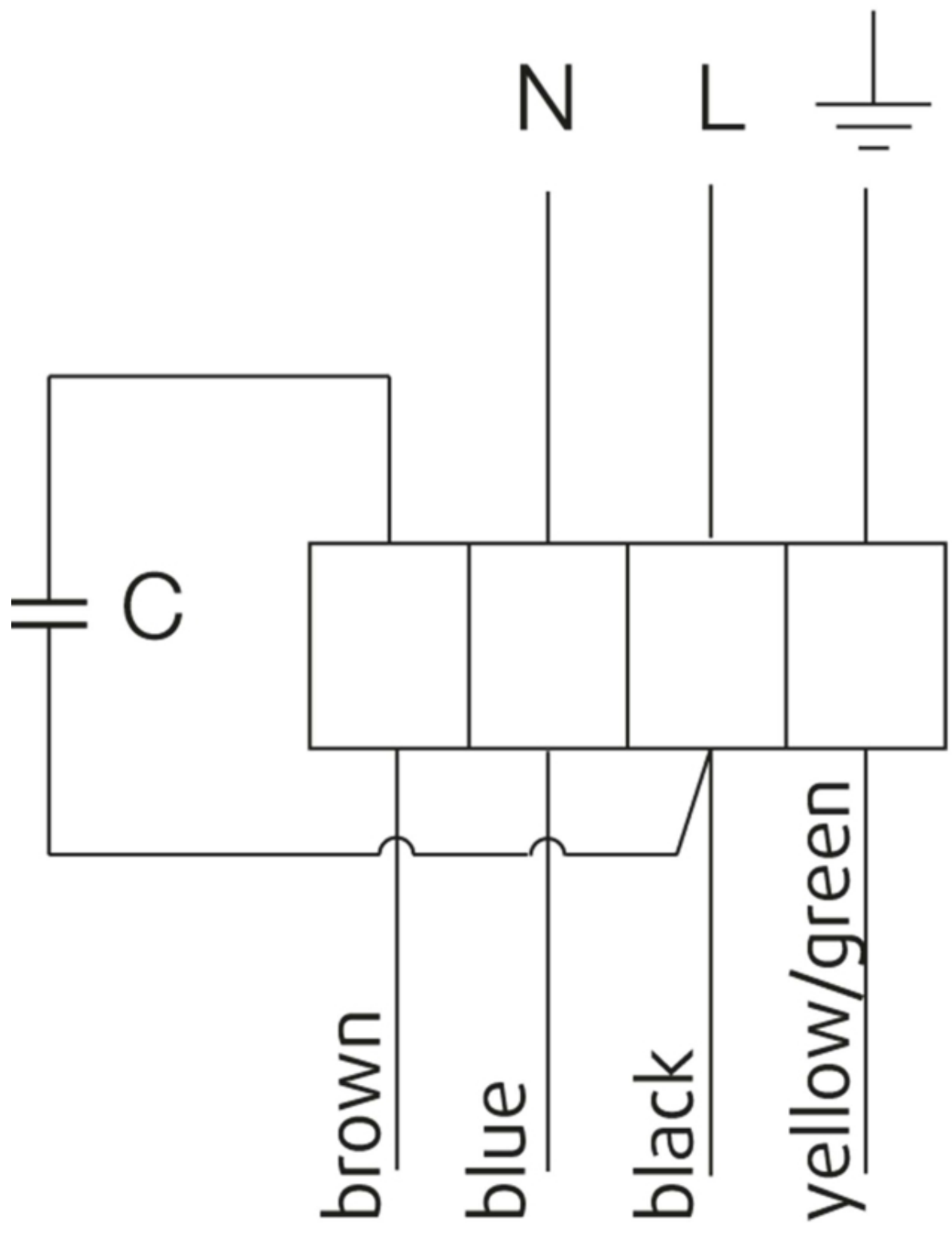
Our Address

Puravent, Adremit Limited, Unit 5a, Commercial Yard,
Settle, North Yorkshire, BD24 9RH



Wiring

230V 1~



- U1 = blue = blau
- U2 = black = schwarz
- Z = brown = braun
- PE = yellow/green = grün-gelb

Get In Touch

Call: [0845 6880112](tel:08456880112)
 Email: info@adremit.co.uk

Our Address

Puravent, Adremit Limited, Unit 5a, Commercial Yard,
 Settle, North Yorkshire, BD24 9RH



Accessories


Electric accessories

[RE 1.5 Speed control \(5000\)](#)
[REU 1.5 Speed control \(5004\)](#)
[REE 1 Speed control \(5314\)](#)
[REPT 6 Digital regulator \(5698\)](#)
[RT 0-30 Room Thermostat \(5151\)](#)
[CO2RT-R-D Transmitter \(6993\)](#)
[Presence detector/IR24-P \(6995\)](#)
[RETP 6 Temp/Pressure regulator \(32293\)](#)
[DTV200 \(6261\)](#)
[STL 1.5 Speed controller \(84251\)](#)
[REV-3POL/03 ON/OFF \(33978\)](#)
[FRQS-E-6A \(37419\)](#)
[FRQ5S-E-6A \(37421\)](#)
[DTV500A \(96807\)](#)

Accessories

[RBM 40-20/9 400V/3 Duct heater \(5450\)](#)
[PGK 40-20-3-2,0 Duct cooler \(6604\)](#)
[VBR 40-20-2 Water heating batt \(5463\)](#)
[VBR 40-20-4 Water heating batt \(5471\)](#)
[LDR 40-20 Silencer \(5069\)](#)
[FFK 40-20 Filter cassette rect \(1750\)](#)
[DS 40-20 Flexible connection \(1539\)](#)
[GFL 40-20 Counter flange \(2705\)](#)
[DXRE 40-20-3-2,5 Duct cooler \(7951\)](#)
[RB 40-20/15-1 400V/3 Duct heat \(9628\)](#)
[RB 40-20/9-1 400V/3 Duct heat. \(9627\)](#)
[RKT-SYS-400x200-S \(43629\)](#)
[RK-SYS-400x200-R \(43643\)](#)
[RK-SYS-400x200-S \(43652\)](#)

Documentation

 [202341_Fans_Instructions_CE_A010.pdf \(1,83MB\)](#)

Specification text

The box consists of electroplated steel plate. The fans have a radial impeller with backwards- curved impeller vanes which are pivoting. For making cleaning and attendance easier the fan device is assembled at the folding closure head. The fans can be installed in each fitting position and with the help of the flexible DS connection they are very easy to built in. The actuation is carried out by a foolproofed, maintenance- free and speed-controlled external rotor motor. For protecting the motor, the production run has built in thermal contacts with manually reset device with completed lines to a motor protection device according to EN 60335-2-80. For annealing the engine is designed inside the air flow. Impeller according to VDI 2060, quality category Q6,3 and dynamically weigh heavy in two levels.

Get In Touch



Call: [0845 6880112](tel:08456880112)



Email: info@adremit.co.uk

Our Address

Puravent, Adremit Limited, Unit 5a, Commercial Yard,
Settle, North Yorkshire, BD24 9RH