



RSI 60-35 L3 SILEO

Item no. 39637

Version: 400V 3~

Document type: **Product card**

Document date: **2019-06-24**

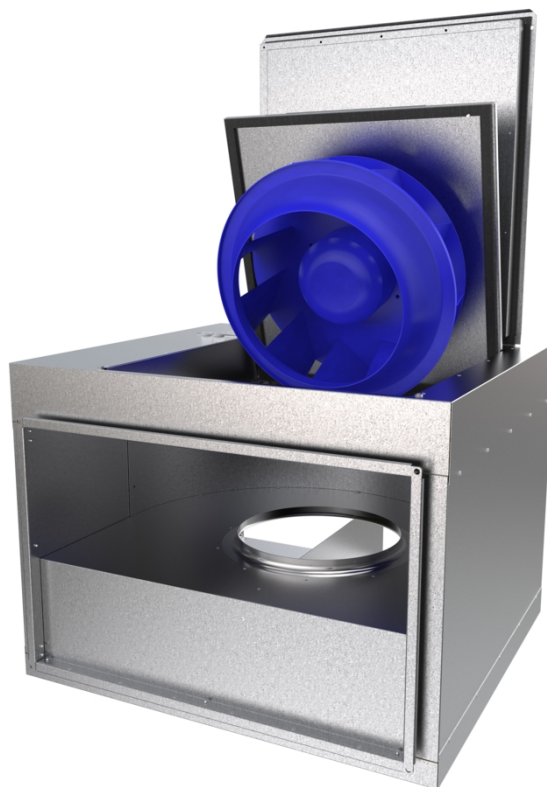
Generated by: **Systemair Online Catalogue**



Description

- Speed-controllable
- Integral thermal contacts
- Can be installed in any position
- Maintenance-free and reliable


The RSI models have impellers with backward-curved blades and external rotor motors. The motor and impeller are mounted on the access cover to facilitate easy maintenance. The RSI models are thermally and acoustically insulated with 50 mm of mineral wool, with perforated sheet steel on the inner surface. To protect the motor from overheating the RSI fans have integral thermal contacts with external leads for connection to a motor protection device. The fans can be installed in any position and are easy to connect using the DS flexible connections. The casing is manufactured from galvanised sheet steel.



Technical parameters

Nominal data		
Voltage	400	V
Frequency	50	Hz
Phase	3	~
Input power (P1)	537	W
Current	1,25	A
Max. airflow	1,18	m³/s
R.p.m.	1413	r.p.m.
Weight	60,4	kg
Temperature data		
Max. temperature of transported air	70	°C
Max. temperature of transported air when speed-controlled	70	°C

Get In Touch

 Call: [0845 6880112](tel:08456880112)
 Email: info@adremit.co.uk

Our Address

Puravent, Adremit Limited, Unit 5a, Commercial Yard,
 Settle, North Yorkshire, BD24 9RH

Sound data

Sound pressure level at 3 m 52,4 dB(A)

Protection / Classification

Insulation class F

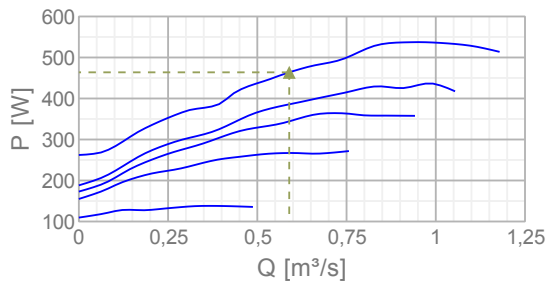
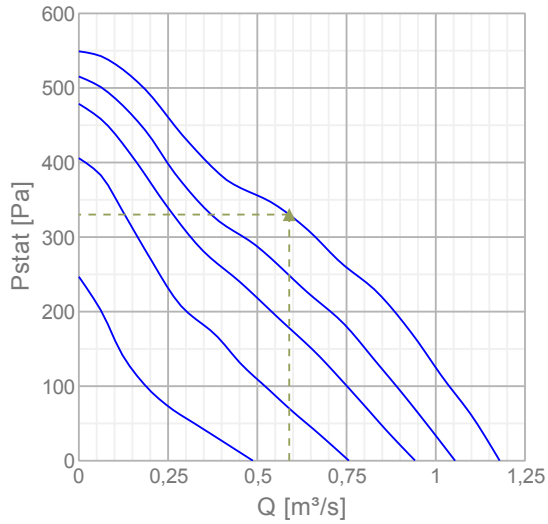
Enclosure class, motor IP54

ErP

ErP ready ErP 2018

Diagrams

Diagrams



Max efficiency

Hydraulic data										
▲ Working air flow		0,589 m³/s								
▲ Working static pressure		330 Pa								
▲ Power		464 W								
Speed		1426 r.p.m.								
Current		1,18 A								
SFP		0,787 W/(l/s)								
Voltage		400 V								
Sound power level		63	125	250	500	1k	2k	4k	8k	Tot
Inlet	dB(A)	55	70	65	65	61	59	55	48	73
Outlet	dB(A)	62	72	72	74	74	71	66	57	80
Surrounding	dB(A)	28	57	54	50	48	43	35	27	60

Name: **RSI 60-35 L3 SILEO** | Item no.: **39637** | Version: **400V 3~**

Document type: **Product card** | Document date: **2019-06-24** | Generated by: **Online catalogue**

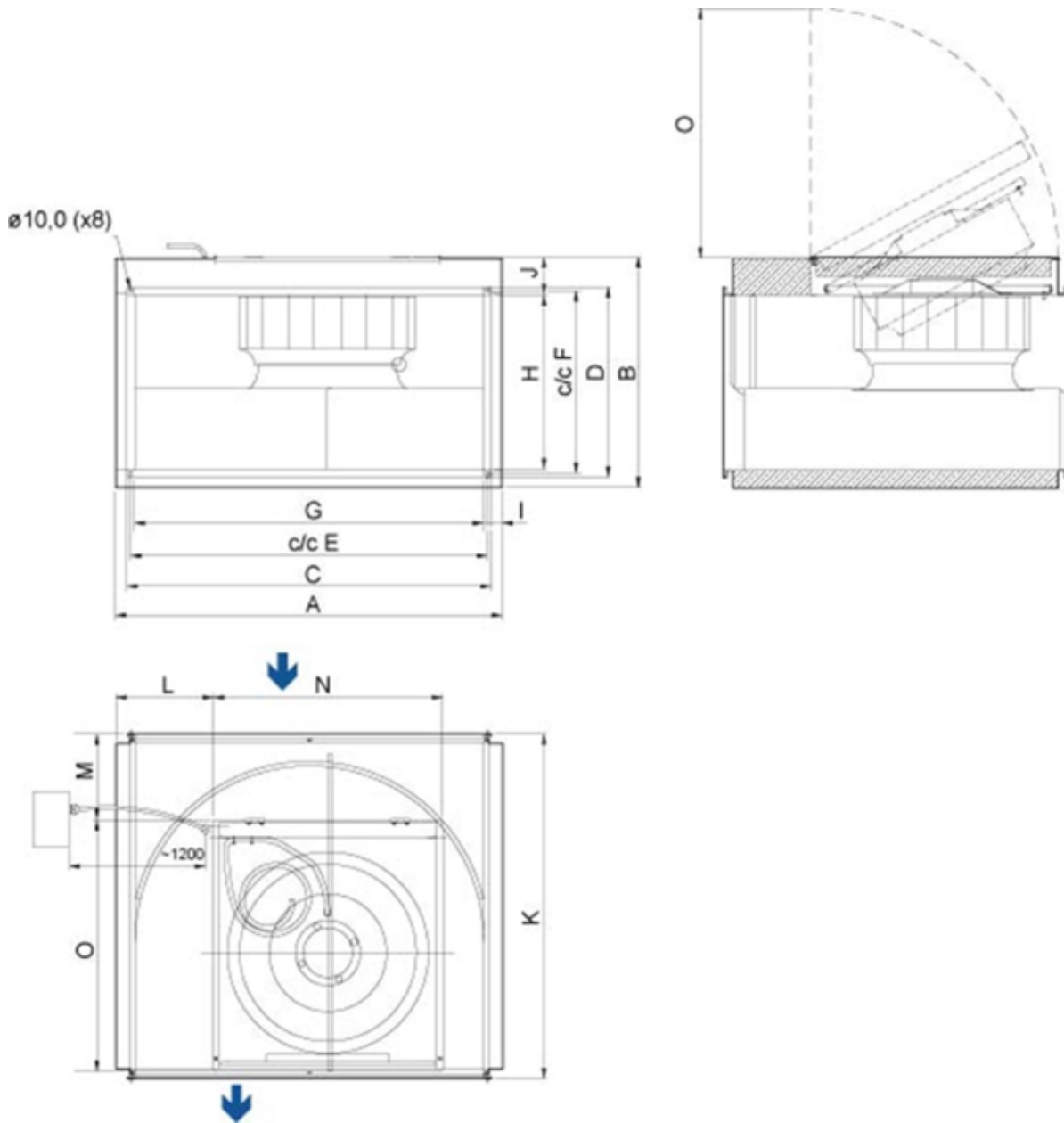
Get In Touch

Call: [0845 6880112](tel:08456880112)
 Email: info@adremit.co.uk

Our Address

Puravent, Adremit Limited, Unit 5a, Commercial Yard,
 Settle, North Yorkshire, BD24 9RH

Dimensions





RSI	A	B	C	D	E	F	G	H	I	J	K	L	M	N	O
60-35	708	492	640,5	391	620	370	598	347,5	55	92,5	717	139,5	99,5	532	597

Name: **RSI 60-35 L3 SILEO** | Item no.: **39637** | Version: **400V 3~**

3 / 4

Document type: **Product card** | Document date: **2019-06-24** | Generated by: **Online catalogue**

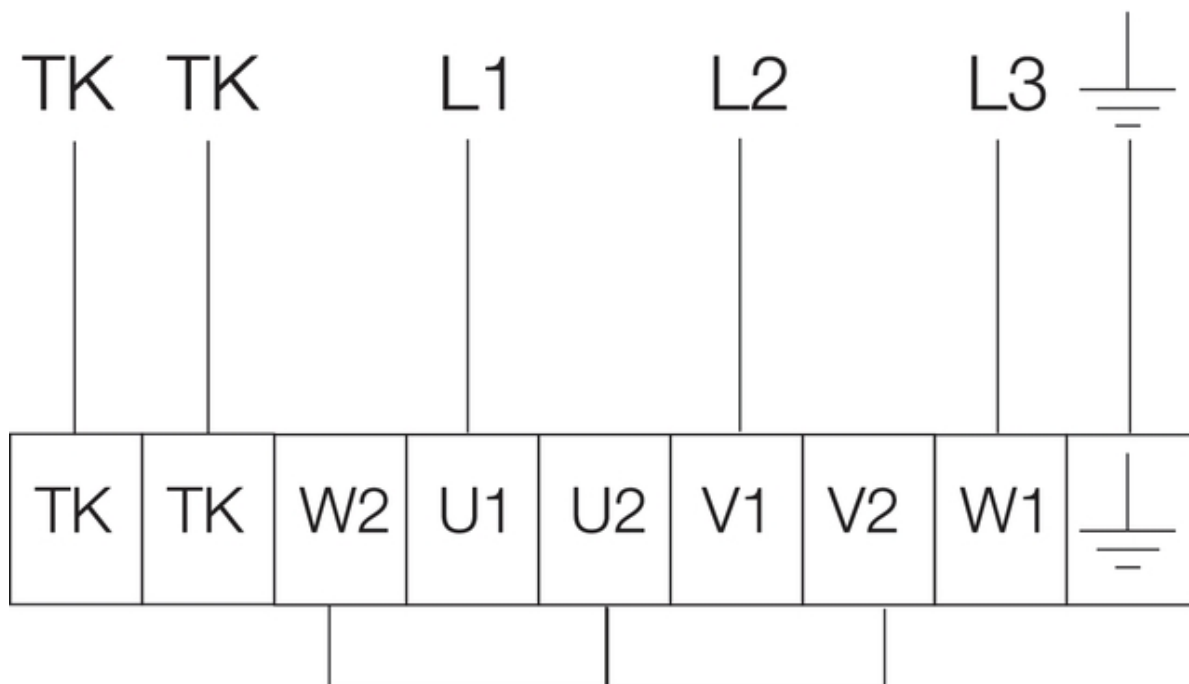
Get In Touch

 **Call:** [0845 6880112](tel:08456880112)
 **Email:** info@adremit.co.uk

Our Address

Puravent, Adremit Limited, Unit 5a, Commercial Yard,
Settle, North Yorkshire, BD24 9RH

400V 3~



Accessories


Electric accessories

[RTRD 2 Speed Cont. Systemair \(5941\)](#)
[RTRDU 2 Speed contr. Systemair \(5945\)](#)
[RT 0-30 Room Thermostat \(5151\)](#)
[STDT 16 Motor Protection \(5152\)](#)
[STDT 16E Motor Protection \(5153\)](#)
[CO2RT-R-D Transmitter \(6993\)](#)
[Presence detector/IR24-P \(6995\)](#)
[DTV200 \(6261\)](#)
[REV-5POL/07 ON/OFF \(33980\)](#)
[DTV500A \(96807\)](#)

Accessories

[RBM 60-35/27 400V/3 Duct heater \(5454\)](#)
[VBR 60-35-2 Water heating batt \(5467\)](#)
[VBR 60-35-4 Water heating batt \(5475\)](#)
[LDR 60-35 Silencer \(5073\)](#)
[FFK 60-35 Filter cassette rect \(1761\)](#)
[DS 60-35 Flexible connection \(1549\)](#)
[GFL 60-35 Counter flange \(2709\)](#)
[VK-60-35 Louvre shutter \(5650\)](#)
[DXRE 60-35-3-2,5 Duct cooler \(7956\)](#)
[RB 60-35/27-2 400V/3 Duct heat \(9643\)](#)
[RB 60-35/45-3 400V/3 Duct heat \(9644\)](#)
[RKT-SYS-600x350-S \(43633\)](#)
[RK-SYS-600x350-S \(43656\)](#)

Documentation


[202341_Fans_Instructions_CE_A010.pdf \(1,83MB\)](#)

Get In Touch

 **Call:** [0845 6880112](tel:08456880112)
 **Email:** info@adremit.co.uk

Our Address

Puravent, Adremit Limited, Unit 5a, Commercial Yard,
 Settle, North Yorkshire, BD24 9RH