



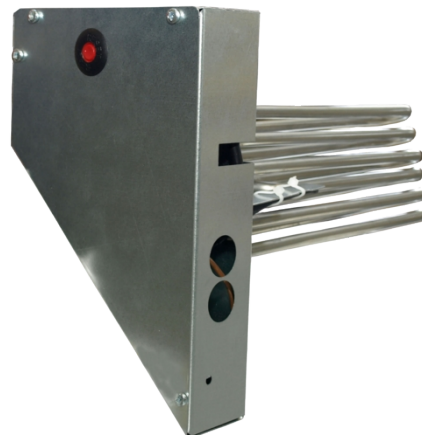
REHEATER VTC 300 R

Item no. 2488

Document type: **Product card**
Document date: **2019-06-25**
Generated by: **Systemair Online Catalogue**

Description


Re-heater battery is optional and can be ordered as an accessory, to be installed inside the VTC unit.



Technical parameters

Voltage	230	V
Phase	1	~
Power	1,7	kW
Current	7,4	A
Weight	1,4	kg

Wiring

 [VTC_300_WD_207234_en-GB \(A006\).pdf \(429,70kB\)](#)

Accessories

Documentation

Specification text

Get In Touch

 Call: [0845 6880112](tel:08456880112)
 Email: info@adremit.co.uk

Our Address

Puravent, Adremit Limited, Unit 5a, Commercial Yard,
Settle, North Yorkshire, BD24 9RH

