



APPLICATIONS

Recessed ceiling heaters are designed for installation into either a standard suspended grid or plasterboard ceiling, wherever there is sufficient space above to accommodate them.

The RCHS front panel can be cut down to a minimum 600mm x 400mm for use where the full 600mm x 600mm is not required, such as over door or perimeter use.

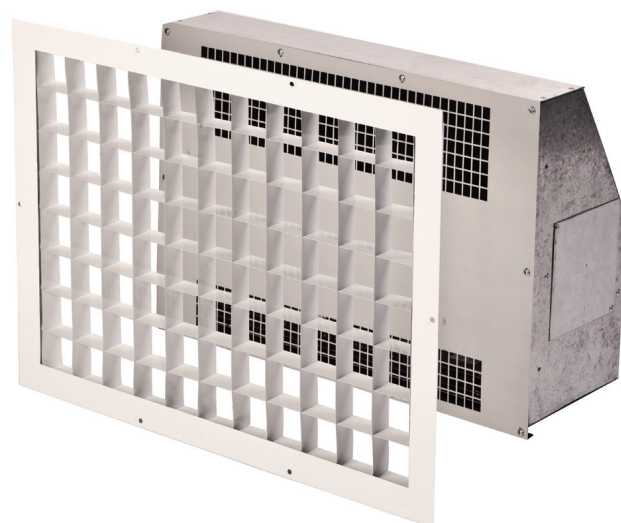
They can be installed as the main or supplementary heating in shops, reception areas, toilets etc. For even heating a greater number of 3kW units is preferable over fewer 4.5kW units.

Locating the units in positions of greatest heat loss gives an easy solution to uneven heating of open plan areas. The high level mounting has the added benefit of re-circulating the hot air from ceiling level for greater heating efficiency. Front mounted air intake ensures only pre-heated air from the room is re-circulated.

FEATURES

Remote switching unit for heat selection and fan only.

- Easy access to connections for quick installation
- Loadings at 3kW and 4.5kW
- Front mounted intake ensuring recirculation of room air only
- Models for suspended T bar ceiling systems, standard plasterboard ceilings and surface mounting
- Minimum height for ease of installation in smaller ceiling voids
- Light grey textured powder coated finish front cover (RAL7035)
- Front cover can be modified for non standard tiles
- Over temperature safety cut-out with power off reset



Get In Touch

 **Call:** [0845 6880112](tel:08456880112)
 **Email:** info@adremit.co.uk

Our Address

Puravent, Adremit Limited, Unit 5a, Commercial Yard,
Settle, North Yorkshire, BD24 9RH



OPTIONS

- RCHS - Inset white aluminium diffuser for 600mm x 600mm T bar ceiling
- RCHR - Recess fitting white aluminium diffuser for plasterboard ceiling (600mm x 400mm)
- RCHB - Light grey textured finish cover for surface fixing

CONTROL

HEAT OUTPUT For convenient selection of output and fan only, remote switching is achieved by wiring the internal connector block to the Remote Switch Unit. This allows selection of 3, 2 or 1kW output for the RCH-3210 or 4.5 and 2.25kW for the RCH-4200.

TEMPERATURE Single units can be wired through a suitable thermostat mounted out of the direct influence of the heated airflow. Multiple units are best controlled in 'zones' via thermostat and contactor.

The heaters are designed for ceiling mounting. It is not advisable to position them over desks, counters or high level display racking wherever a constant flow of heated air may be uncomfortable or cause overheating.

RCHS Mounting brackets are provided for mounting either directly to a standard 600mm x 600mm grid or by suspension rods to suitable supports. The brackets allow mounting flush with the ceiling or on top of the T bar allowing the fitting of the aluminium diffuser. The front panel can be cut down to a minimum of 600mm x 400mm for non standard tiles.

RCHR Mounting brackets are provided for mounting in a 600mm x 405mm cut-out, the brackets being fixed to the heater and then screwed to the surface of the ceiling .Alternatively fixings can be made through the sides of the unit into a suitable frame. The special aluminium diffuser is then fitted directly to the ceiling.

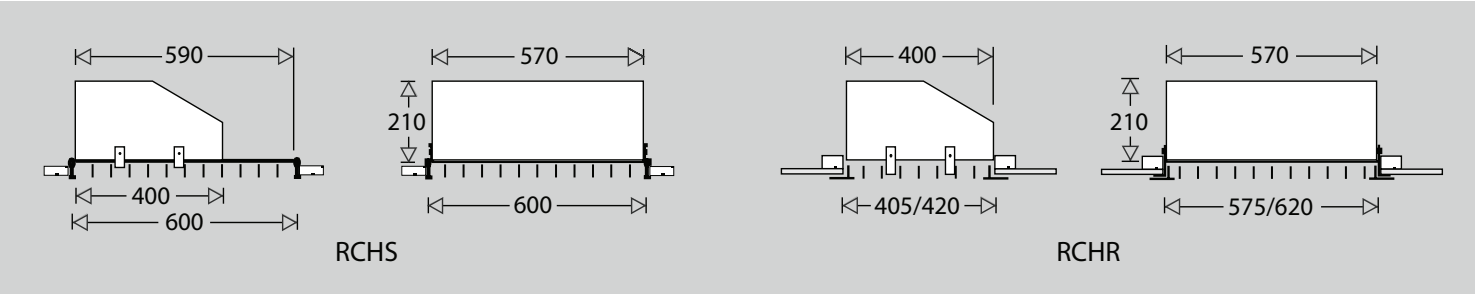
RCHB The heater is mounted directly to the ceiling with appropriate fixings through the top of the unit. An overall cover is then fitted to give a finished surface installation.

INSTALLATION

The minimal height of the unit allows it to be fitted within a ceiling void of 250mm. The maximum recommended mounting height is 3m.

Connection should be made to a suitably fused power supply via the remote switch unit or a 2 pole switched connection unit having a contact separation of at least 3mm in all poles. Access to the connector block is gained by opening the side cover plate (1 screw), connection is then made using cables with 4 cores and earth, with at least one being rated to take the full load current.

All electrical connections should be made by a suitably qualified person in accordance with the latest edition of the IEE Requirements for Electrical Installation (BS 7671:2008).



CAT No.		Watts	Volts	Length mm	Height mm	Depth mm	Weight kgs	
RCHS-3210	Modular ceiling	3000	230	590	570	210	8.0	
RCHS-4200	Modular ceiling	4500	230	590	570	210	8.0	
RCHB-3210	Surface mounting	3000	230	620	420	210	9.0	
RCHB-4200	Surface mounting	4500	230	620	420	210	9.0	
RCHR-3210	Plasterboard ceiling	3000	230	590	405	210	8.5	
RCHR-4200	Plasterboard ceiling	4500	230	590	405	210	8.5	

Get In Touch

Call: [0845 6880112](tel:08456880112)
 Email: info@adremit.co.uk

Our Address

Puravent, Adremit Limited, Unit 5a, Commercial Yard,
Settle, North Yorkshire, BD24 9RH