



## APPLICATIONS

An addition to the standard range of recessed ceiling heaters, giving increased controllability to meet the requirements of the latest building regulations.

Recessed ceiling heaters are designed for installation into either a standard suspended grid or plasterboard ceiling. All the heaters are controlled by a central time clock or programmer (CTTF). This runs the fans continuously, re-circulating the air to give greater comfort throughout the year. The heating element is separately controlled by one or more thermostats to ensure heat is only supplied when and where it is required.

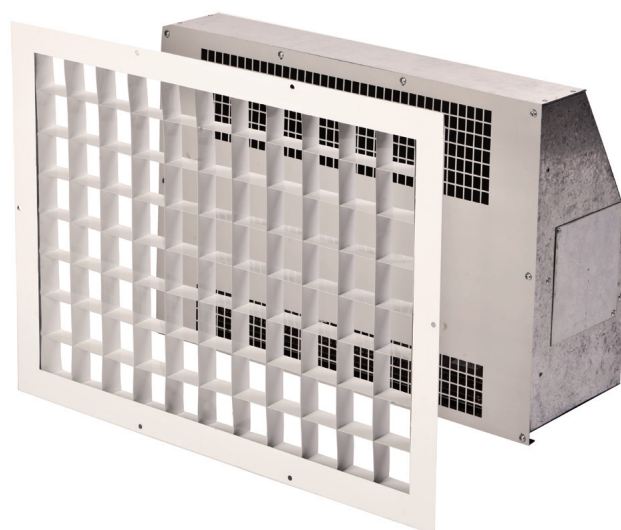
## FEATURES

**Integral relays** allowing

- independent control of fan and heat
- switching by standard thermostats and timers
- control of multiple units

Plus standard features of:

- Easy fit directly to T bar
- Easy access to connections for quick installation (one screw)
- Front mounted intake ensuring re-circulation of room air only
- Minimum height for ease of installation (250mm recommended)
- White alluminum egg crate grille
- Light grey textured powder coated finish front cover (RAL7035)
- Front cover can be modified for non-standard tiles
- Over temperature safety cut-out with power off reset
- Range of control options



### Get In Touch



**Call:** [0845 6880112](tel:08456880112)



**Email:** [info@adremit.co.uk](mailto:info@adremit.co.uk)

### Our Address

Puravent, Adremit Limited, Unit 5a, Commercial Yard,  
Settle, North Yorkshire, BD24 9RH



OPTIONS

- RCHS-TT for 600x600 modular suspended ceilings
- RCHR-TT for plasterboard ceilings (600x400)
- RCHB-TT for surface fixing

CONTROL

**FAN OUTPUT** The main relay controls the supply to the unit. This has to be switched by a fused 230V supply incorporating either a time switch/programmer for automatic control (CTTF) or an on/off switch for manual control. The fan runs continuously when the relay is switched on.

**HEAT OUTPUT** The second relay controls the switching of the heating elements, they are not switched individually.

**TEMPERATURE** The second relay is also switched by fused 230V supply, usually the time-controlled circuit. A single thermostat (CRST-16 or CPRSTW) can control all the heaters. Alternatively several can be used to create zones thus compensating for uneven heat requirements.

The thermostats should be mounted out of the direct influence of the heated airflow.

INSTALLATION

The heaters are designed for ceiling mounting. It is not advisable to position them over desks, counters or high level display racking wherever a constant flow of heated air may be uncomfortable or cause overheating.

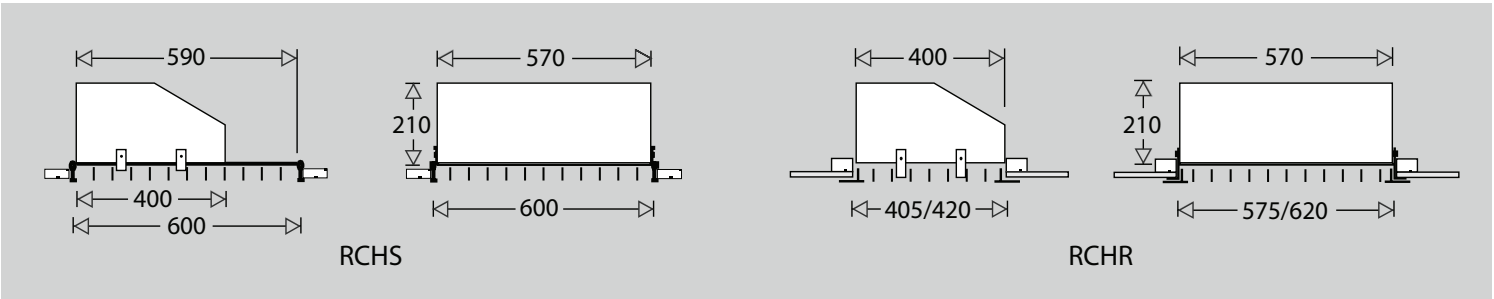
The minimal height of the unit allows it to be fitted within a ceiling void of 250mm.

The maximum recommended mounting height is 3m.

Power connection should be made to a suitably fused power supply via a 2 pole switched connection unit having a contact separation of at least 3mm in all poles.

Control connection is generally made using cables with 4 cores and earth.

All electrical connections should be made by a suitably qualified person in accordance with the latest edition of the IEE Requirements for Electrical Installation (BS 7671:2008).



CAT No.		Watts	Volts	Length mm	Height mm	Depth mm	Weight kgs	
RCHS-3210-TT	Modular ceiling	3000	230	590	570	210	8.0	
RCHS-4200-TT	Modular ceiling	4500	230	590	570	210	8.0	
RCHB-3210-TT	Surface mounting	3000	230	620	420	210	9.0	
RCHB-4200-TT	Surface mounting	4500	230	620	420	210	9.0	
RCHR-3210-TT	Plasterboard ceiling	3000	230	590	405	210	8.5	
RCHR-4200-TT	Plasterboard ceiling	4500	230	590	405	210	8.5	
CRST-16	Integral room thermostat (16A)							
CTRT-10	Tamper proof room thermostat (10A)							
CPRSTW	Programmable wireless roomstat (16A)							
CTTF	7 day fused time controller (13A)							

Get In Touch

Call: [0845 6880112](tel:08456880112)  
 Email: [info@adremit.co.uk](mailto:info@adremit.co.uk)

Our Address

Puravent, Adremit Limited, Unit 5a, Commercial Yard,  
Settle, North Yorkshire, BD24 9RH