



# KV DUO 630 EC

Item no. 76836



## Description

- Speed-controllable
- Integrated electronic motor protection
- Safe and maintenance free operation
- Energy-saving
- Suitable for External Mounting as standard
- Low noise level
- Twin fan – Run & Standby

The KV DUO fans are driven by EC-external rotor motors. These are energy saving motors with high efficiency. The power electronics are integrated in the motor housing. All models have one potential-free terminal for error message. All motors are suitable to be used for 50/60Hz. The input voltage for single phase units can vary between 200 and 277V, for three phase units between 380 and 480V. Speed control by a 0-10V signal.

The fans are easy to connect to spiral ducts using FK mounting clamps. The KV DUO models are manufactured from Aluzinc sheet steel with acoustic insulation and are suitable for external mounting on roofs. All models are equipped with backward curved centrifugal impellers wired out to an IP65 Terminal box.



## Technical parameters

Nominal data		
Voltage	400	V
Frequency	50	Hz
Phase	3	~
Input power (P1)	3015	W
Current	4,66	A
Max. airflow	3,55	m³/s
R.p.m.	1633	r.p.m.
Weight	210	kg
Temperature data		
Max. temperature of transported air	60	°C
Max. temperature of transported air when speed-controlled	60	°C
Sound data		
Sound pressure level at 3 m	72,3	dB(A)
Protection / Classification		
Insulation class		F
Enclosure class, motor		IP54

### Get In Touch

Call: [0845 6880112](tel:08456880112)  
 Email: [info@adremit.co.uk](mailto:info@adremit.co.uk)

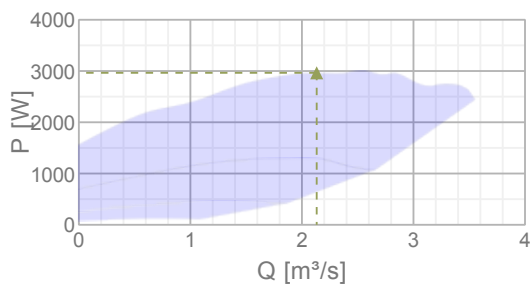
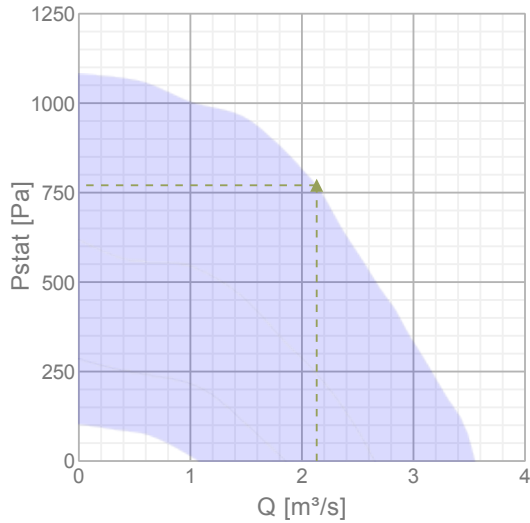
### Our Address

Puravent, Adremit Limited, Unit 5a, Commercial Yard,  
 Settle, North Yorkshire, BD24 9RH



## Diagrams

### Diagrams



### Max efficiency

Hydraulic data											
▲ Working air flow										2,13 m <sup>3</sup> /s	
▲ Working static pressure										771 Pa	
▲ Power										2965 W	
Speed										1645 r.p.m.	
Current										4,55 A	
SFP										1,39 W/(l/s)	
Voltage										400 V	
Sound power level			63	125	250	500	1k	2k	4k	8k	Tot
Inlet	dB(A)		63	86	82	78	75	73	68	62	88
Outlet	dB(A)		65	84	80	81	81	77	72	64	88
Surrounding	dB(A)		52	76	76	70	61	54	46	39	80

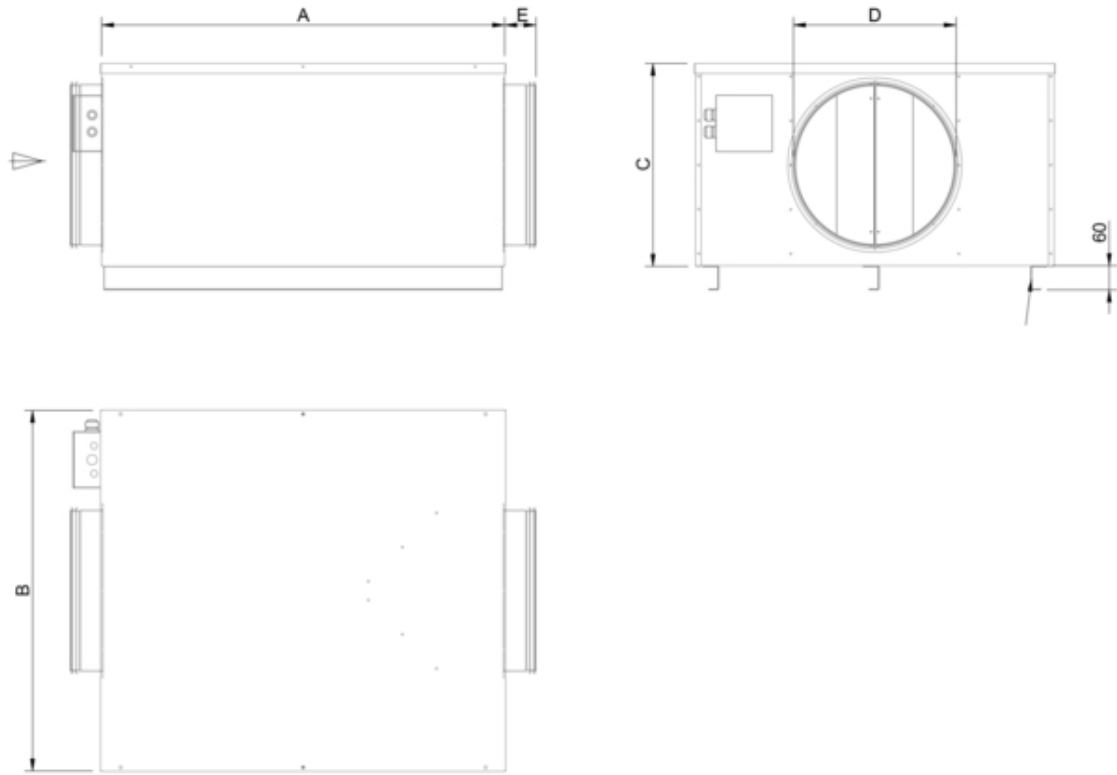
### Get In Touch

 **Call:** [0845 6880112](tel:08456880112)  
 **Email:** [info@adremite.co.uk](mailto:info@adremite.co.uk)

### Our Address

Puravent, Adremite Limited, Unit 5a, Commercial Yard,  
Settle, North Yorkshire, BD24 9RH

## Dimensions





KV DUO	A	B	C	D	E
150	500	360	280	150	40
250	580	430	360	250	60
315	740	650	425	315	60
400	1000	895	505	400	65
500	1265	940	605	500	80
630	1383	1205	884	630	80

Name: **KV DUO 630 EC** | Item no.: **76836**

Document type: **Product card** | Document date: **2019-07-10** | Generated by: **Online catalogue**

3 / 5

### Get In Touch

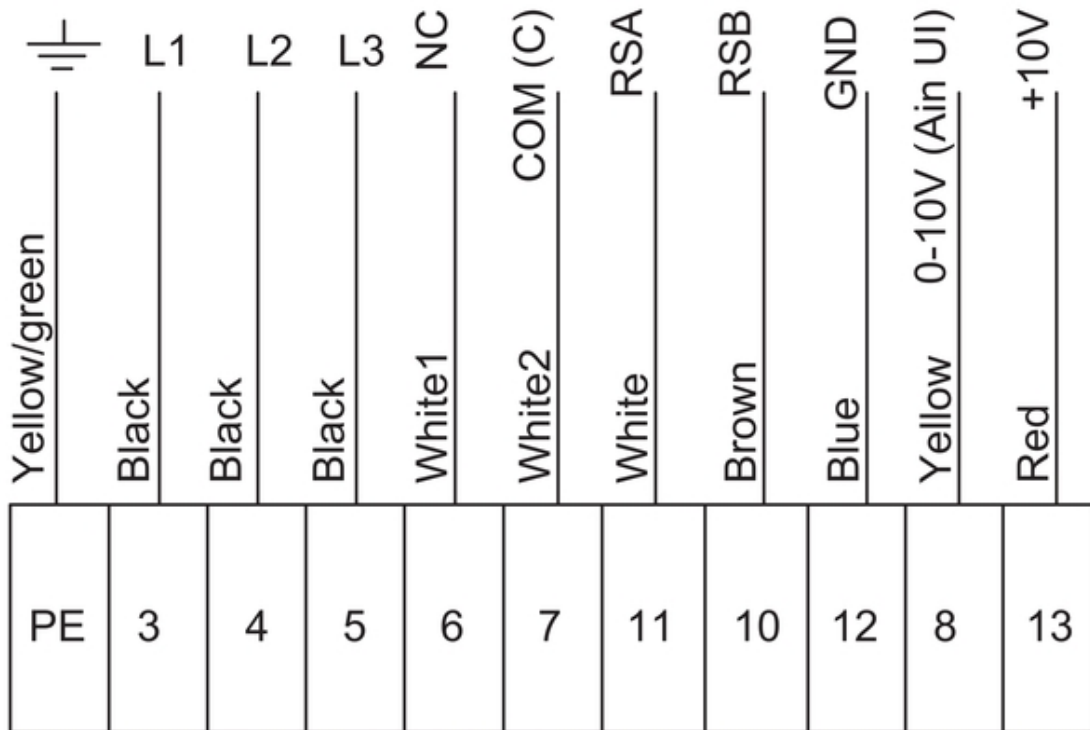
 Call: [0845 6880112](tel:08456880112)  
 Email: [info@adremit.co.uk](mailto:info@adremit.co.uk)

### Our Address

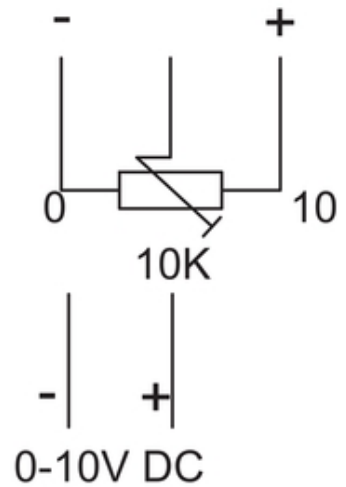
Puravent, Adremit Limited, Unit 5a, Commercial Yard,  
Settle, North Yorkshire, BD24 9RH

Wiring

400V 3~



External potentiometer  
Optional



PE	Yellow/green
3	Black
4	Black
5	Black
6	White1
7	White2
11	White
10	Brown
12	Blue
8	Yellow
13	Red

External potentiometer optional

Get In Touch

Call: [0845 6880112](tel:08456880112)  
Email: [info@adremit.co.uk](mailto:info@adremit.co.uk)

Our Address

Puravent, Adremit Limited, Unit 5a, Commercial Yard,  
Settle, North Yorkshire, BD24 9RH

## Accessories

### Electric accessories

[RT 0-30 Room Thermostat \(5151\)](#)  
[CO2RT-R-D Transmitter \(6993\)](#)  
[Presence detector/IR24-P \(6995\)](#)  
[MTV-1/010 Controller 0..10V+ \(30650\)](#)  
[MTP 10, 10K, Speed control \(32731\)](#)  
[EC-Vent Room Unit \(3018\)](#)  
[EC-Vent control board \(3115\)](#)  
[MTP 20, on/off, 3-step \(310220\)](#)  
[EC-Basic-H humidity \(24807\)](#)  
[EC-Basic-T temperature \(24805\)](#)  
[EC-Basic-U universal 0-10V \(24806\)](#)  
[EC-Basic-CO2 and temperature \(24808\)](#)  
[EC-Selector \(9908\)](#)  
[CXE/AVC Modbus \(37256\)](#)  
[S-5EC/FRQ \(76738\)](#)  
[ACO8AC/EC ACO Panel IP40 \(93042\)](#)  
[PCA 1000D2 Pressure controller \(76739\)](#)

### Documentation



[202341\\_Fans\\_Instructions\\_CE\\_A010.pdf \(1,83MB\)](#)



[EC-fans\\_Operation\\_and\\_maintenance\\_instr\\_206268\\_CE\\_\(A022\).pdf \(2,88MB\)](#)



[KV DUO 500-630 EC - ACO EC.PDF \(224,03kB\)](#)

### Get In Touch



Call: [0845 6880112](tel:08456880112)



Email: [info@adremit.co.uk](mailto:info@adremit.co.uk)

### Our Address

Puravent, Adremit Limited, Unit 5a, Commercial Yard,  
Settle, North Yorkshire, BD24 9RH