



KVK 250 INS. CIRC. DUCT FAN

Item no. 27428

Version: 50 Hz

Document type: **Product card**
 Document date: **2019-07-10**
 Generated by: **Systemair Online Catalogue**

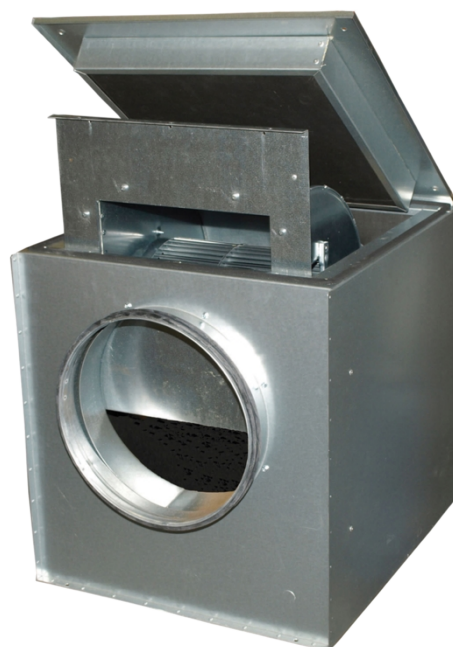


Description

- Speed-controllable
- Integral thermal contacts
- Low noise level
- Easily removable fan assembly

KVK 200-500 models have a double inlet centrifugal fan with forward-curved impellers and a maintenance-free external rotor motor. The fan is mounted on a plate to facilitate easy removal for cleaning and servicing. To protect the motor from overheating the fans have an integral thermal contact with leads for connection to a motor protection device.

The fans can be installed in any position and are easy to connect to spiral ducts using FK mounting clamps. The KVK models are manufactured from galvanised sheet steel and are thermally and acoustically insulated with a 50 mm layer of rockwool with a surface liner which prevents the migration of fibres into the airstream.



Technical parameters

| Nominal data | | |
|---|-------|--------|
| Voltage | 230 | V |
| Frequency | 50 | Hz |
| Phase | 1 | ~ |
| Input power (P1) | 266 | W |
| Current | 1,18 | A |
| Max. airflow | 0,296 | m³/s |
| R.p.m. | 1846 | r.p.m. |
| Min. static back pressure | 30 | Pa |
| Capacitor | 4 | µF |
| Weight | 16,6 | kg |
| Temperature data | | |
| Max. temperature of transported air | 40,7 | °C |
| Max. temperature of transported air when speed-controlled | 40,7 | °C |

Get In Touch

Call: [0845 6880112](tel:08456880112)
 Email: info@adremit.co.uk

Our Address

Puravent, Adremit Limited, Unit 5a, Commercial Yard,
 Settle, North Yorkshire, BD24 9RH

Sound data

Sound pressure level at 3 m 40,2 dB(A)

Protection / Classification

Insulation class F

Enclosure class, motor IP44

ErP

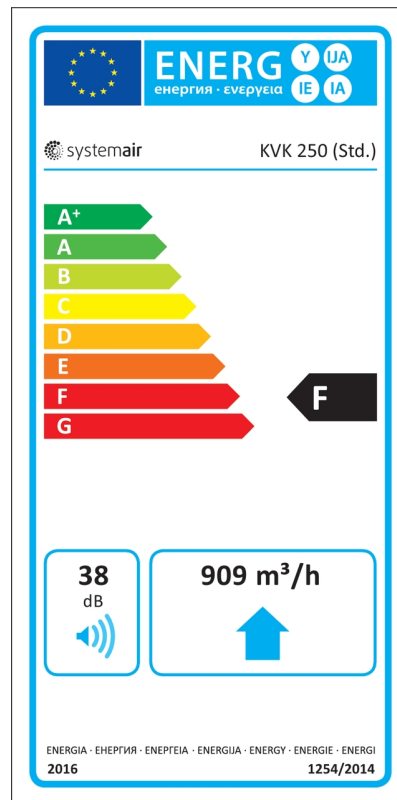
Energy class, basic unit **F**

Energy class, basic unit option **C**

ErP ready ErP 2016/ErP 2018

Energy class label

Energy class, basic unit



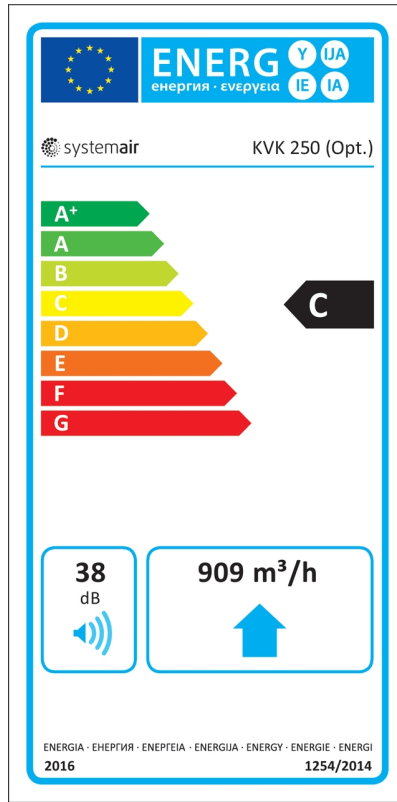
Get In Touch

 Call: [0845 6880112](tel:08456880112)
 Email: info@adremit.co.uk

Our Address

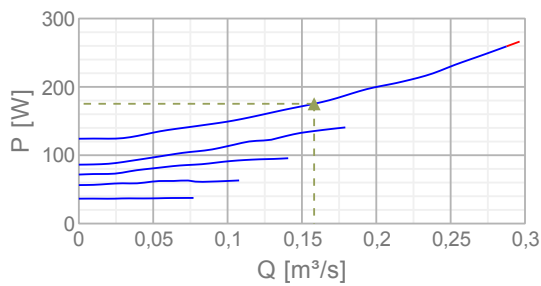
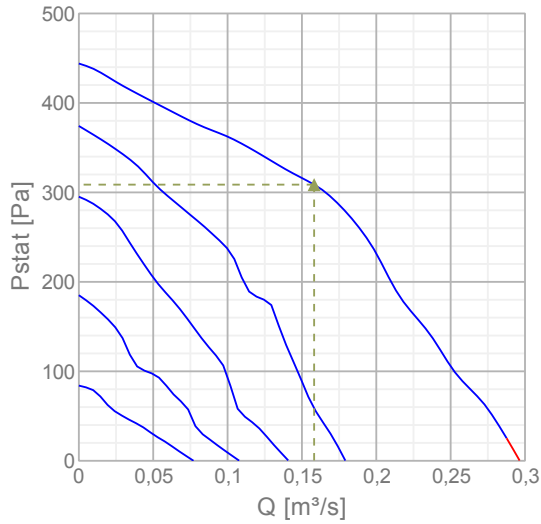
Puravent, Adremit Limited, Unit 5a, Commercial Yard,
Settle, North Yorkshire, BD24 9RH

Energy class, unit with local demand control



Diagrams

Diagrams



Get In Touch

Call: [0845 6880112](tel:08456880112)
 Email: info@adremit.co.uk

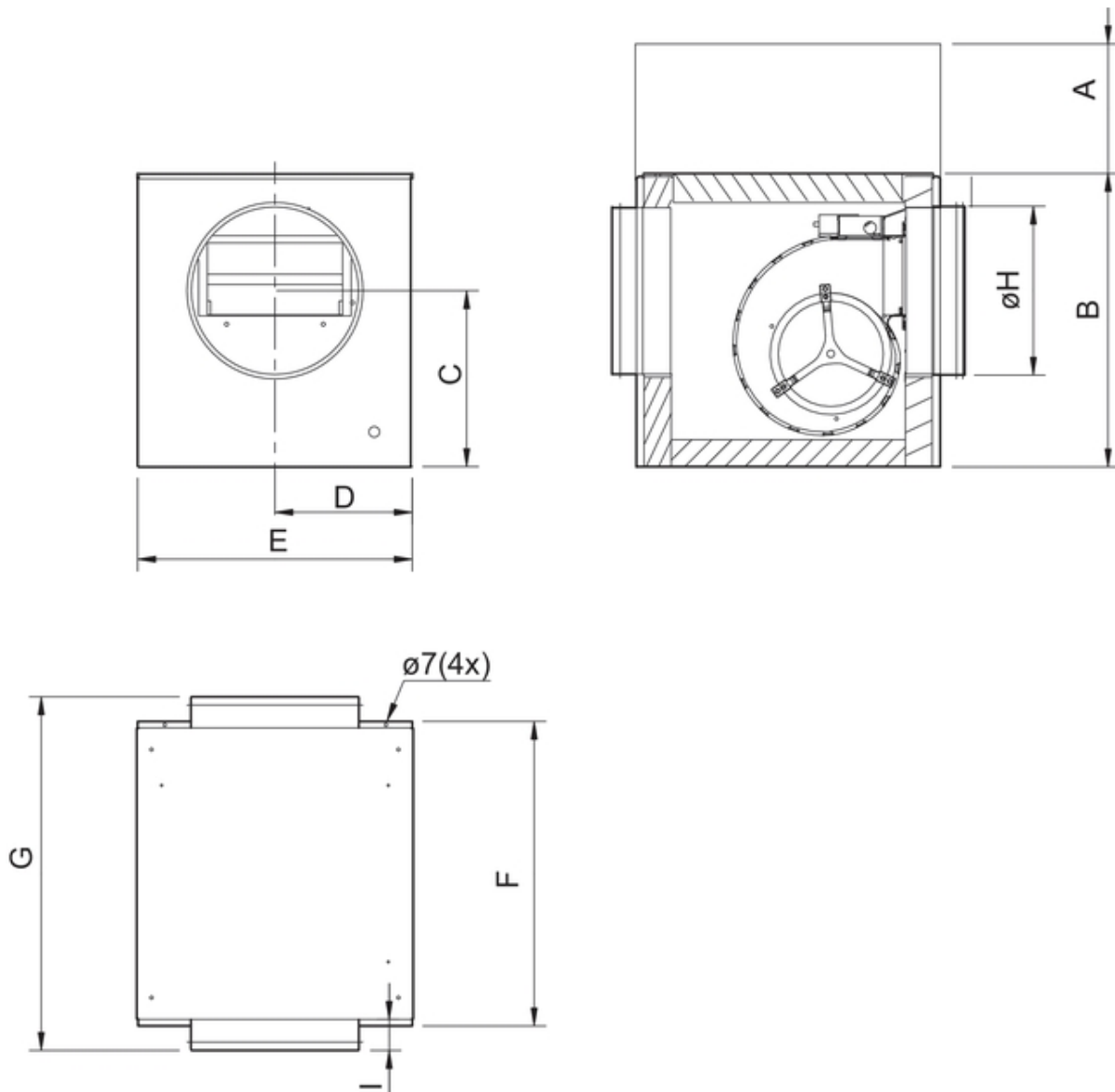
Our Address

Puravent, Adremit Limited, Unit 5a, Commercial Yard,
 Settle, North Yorkshire, BD24 9RH

Max efficiency

| Hydraulic data | | | | | | | | | | |
|---------------------------|-------|----|-----|-----|-----|----|----|----|----|-------------------------|
| ▲ Working air flow | | | | | | | | | | 0,158 m ³ /s |
| ▲ Working static pressure | | | | | | | | | | 309 Pa |
| ▲ Power | | | | | | | | | | 175 W |
| Speed | | | | | | | | | | 2517 r.p.m. |
| Current | | | | | | | | | | 0,766 A |
| SFP | | | | | | | | | | 1,11 W/(l/s) |
| Voltage | | | | | | | | | | 230 V |
| Sound power level | | 63 | 125 | 250 | 500 | 1k | 2k | 4k | 8k | Tot |
| Inlet | dB(A) | 59 | 59 | 61 | 55 | 52 | 51 | 46 | 40 | 65 |
| Outlet | dB(A) | 60 | 70 | 66 | 68 | 70 | 70 | 65 | 60 | 77 |
| Surrounding | dB(A) | 38 | 36 | 44 | 39 | 37 | 38 | 32 | 24 | 47 |

Dimensions



Get In Touch

Call: [0845 6880112](tel:08456880112)
 Email: info@adremit.co.uk

Our Address

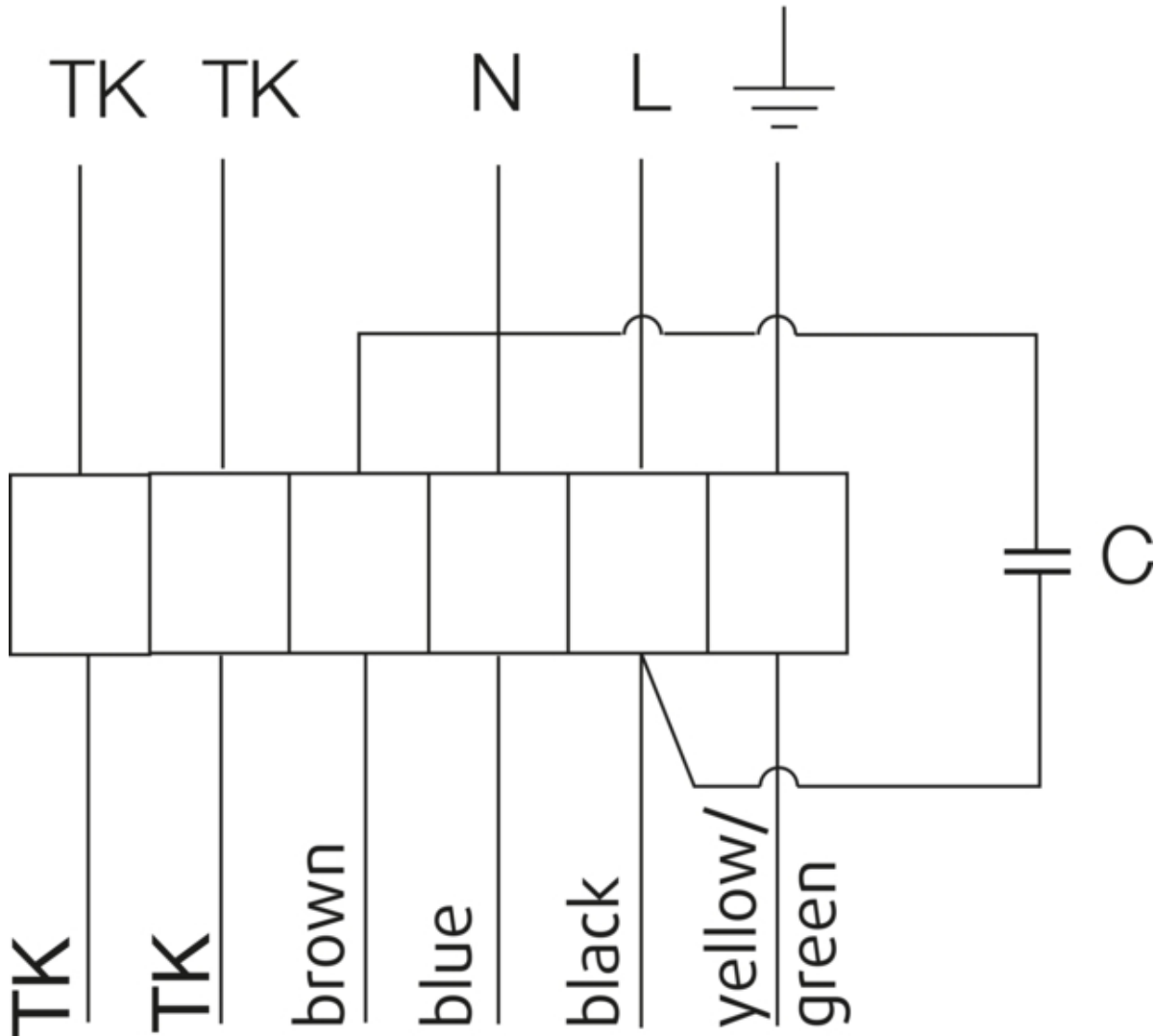
Puravent, Adremit Limited, Unit 5a, Commercial Yard,
 Settle, North Yorkshire, BD24 9RH

| | A | B | C | D | E | F | G | øH | I |
|---------|-----|-----|-----|-----|-----|-----|-----|-----|----|
| KVK 250 | 380 | 385 | 198 | 228 | 460 | 400 | 490 | 250 | 40 |

*= Free area

Wiring

230V 1~



U1 = blue = blau
 U2 = black = schwarz
 Z = brown = braun
 PE = yellow/green = grün-gelb

Get In Touch

Call: [0845 6880112](tel:08456880112)
 Email: info@adremit.co.uk

Our Address

Puravent, Adremit Limited, Unit 5a, Commercial Yard,
 Settle, North Yorkshire, BD24 9RH

Accessories

Electric accessories

[REU 1.5 Speed control \(5004\)](#)
[RTRE 1,5 Speed control \(5008\)](#)
[REE 2 Speed control \(5316\)](#)
[REPT 6 Digital regulator \(5698\)](#)
[RT 0-30 Room Thermostat \(5151\)](#)
[S-ET 10 Motor Protection \(5154\)](#)
[S-ET 10E Motor Protection \(5155\)](#)
[CO2RT-R-D Transmitter \(6993\)](#)
[Presence detector/IR24-P \(6995\)](#)
[RETP 6 Temp/Pressure regulator \(32293\)](#)
[STL 3 Speed controller \(84261\)](#)
[REV-5POL/05 ON/OFF \(33979\)](#)
[FRQS-E-6A \(37419\)](#)
[FRQ5S-E-6A \(37421\)](#)

Accessories

[CB 250-9,0 400V/3 Duct heater \(5373\)](#)
[CB 250-3,0 230V/1 Duct heater \(5385\)](#)
[VBF 250 Water heating battery \(1733\)](#)
[CWK 250-3-2,5 Duct cooler.circ \(30024\)](#)
[VBC 250-2 Water heating batt \(5460\)](#)
[LDC 250-900 Silencer \(5196\)](#)
[FFR 250 Filter cassette \(1776\)](#)
[FGR 250 Filter cassette \(1815\)](#)
[FK 250 Fast clamp \(1612\)](#)
[VKK-250 Back draft damper \(1627\)](#)
[RSK-250 Back draft damper \(5603\)](#)
[SG 250 Protection guard \(5610\)](#)
[VK-25 Louvre shutter \(5640\)](#)
[CBM 250-6,0 400V/2 Duct heater \(9089\)](#)
[VBC 250-3 Water heating batt \(9843\)](#)
[CB 250-6,0 400V/2 Duct heater \(5372\)](#)

Documentation



202341_Fans_Instructions_CE_A010.pdf (1,83MB)



Semko Certificate KVK 1116708.pdf (1,38MB)

Specification text

It's a reliable in operation, maintenance- free, double- sided and soundproofed circular duct fan. The box consists of electroplated steel plate with acoustic insulation and heat insulation made with mineral rock wool with a strength of 50 millimetre, witch should avoid the migration of fibres into the air flow. It's a compact construction with a low noise level. Surfaces which are situated in the inside are protected trough perforated and electroplated steel plate. The fan device, which is responsible for cleaning and attendance is very easy to disassemble. With the help of FK - mounting clamps it is easy to connect the fans to duct and so they can also be installed in each fitting position. The fan has a radial impeller with backwards-curved impeller vane made out of electroplated steel plate. The actuation is carried out by a maintenance- free external rotor motor. It is possible to speed- control the fan by reducing the tension with a thyristor or a transformer. For protecting the engine according to EN 60335-2-80 a thermal contact with completed lines to a motor protection device is built in. For annealing the engine is designed inside the air flow. Impeller according to VDI 2006, quality category Q6,3 and dynamically weigh heavy in two levels.

Get In Touch



Call: [0845 6880112](tel:08456880112)



Email: info@adremit.co.uk

Our Address

Puravent, Adremit Limited, Unit 5a, Commercial Yard,
Settle, North Yorkshire, BD24 9RH