



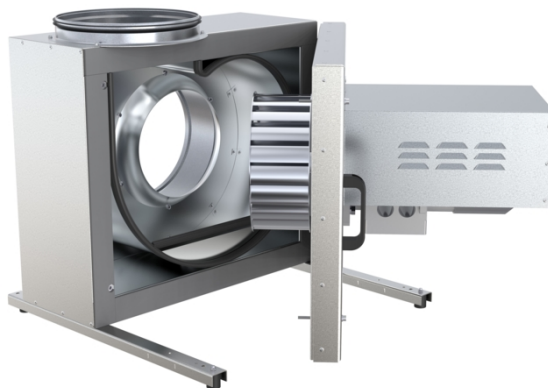
# KBT 280D4 IE2 THERMO FAN

Item no. 77280

Document type: **Product card**  
 Document date: **2019-07-16**  
 Generated by: **Systemair Online Catalogue**

## Description

- High efficient motor IE2
- Speed-controllable via frequency converter
- Integral cold conductor (PTC)
- Standard motor outside the air stream
- Max temperature of transported air up to 120°C
- Low sound level
- Easy to maintain and reliable
- Weather protection for the motor is standard
- Drain plug for liquids that accumulate in the casing is standard



The KBT fans size 225D4-280D4 are equipped with high efficient IE2 motors. The KBT fans have impellers manufactured from galvanized sheet steel with forward-curved blades. The casing is manufactured from double-skinned galvanized sheet steel and is insulated with 50 mm mineral wool.

The KBT fans have a swing-out door for easy inspection and service. The fan is isolated from the casing via connectors and anti-vibration dampers are incorporated into the base frame.

Motor protection is done by cold conductors (PTC), which have to be connected to an external motor protection device.

**Please note: Speed control by voltage, i.e. voltage transformers, is not possible!**

In accordance with Commission Regulation (EC) no 640/2009 of the European Parliament - eco-design requirements for electric motors - the new international efficiency classes are binding as of 16 June 2011. These guidelines defined by CEMEP and EPACKT are regarded as international standard for energy-saving high-efficiency motors for frequencies of 50 or 60 Hz and make the use of IE2 motors mandatory. With this new and more efficient technology we offer our customers many advantages such as environmentally friendly operation, reduced energy consumption and hence lower emissions. IE2 motors have a higher efficiency even in part load operation and allow optimum adjustment to the operating point. In addition, the IE2 motors generate less noise and develop less heat, which has a positive influence on the efficiency and the cooling requirement of the motor. Please note: IE2 motors cannot be speed controlled by voltage, i.e. voltage transformers.

## Technical parameters

Nominal data		
Voltage	400	V
Frequency	50	Hz
Phase	3	~
Connection	Y	
Input power (P1)	3625	W
Current	6,03	A
Max. airflow	1,62	m³/s
R.p.m.	1428	r.p.m.
Weight	60	kg
Temperature data		
Max. temperature of transported air	120	°C
Sound data		
Sound pressure level at 4 m	47	dB(A)

### Get In Touch

Call: [0845 6880112](tel:08456880112)  
 Email: [info@adremit.co.uk](mailto:info@adremit.co.uk)

### Our Address

Puravent, Adremit Limited, Unit 5a, Commercial Yard,  
 Settle, North Yorkshire, BD24 9RH



## Protection / Classification

Insulation class

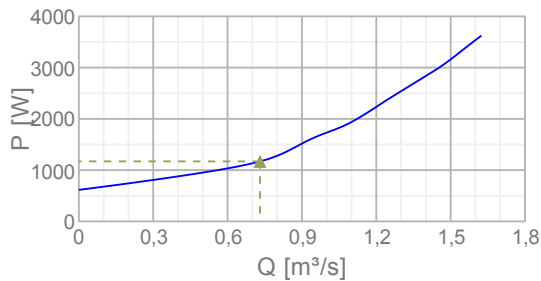
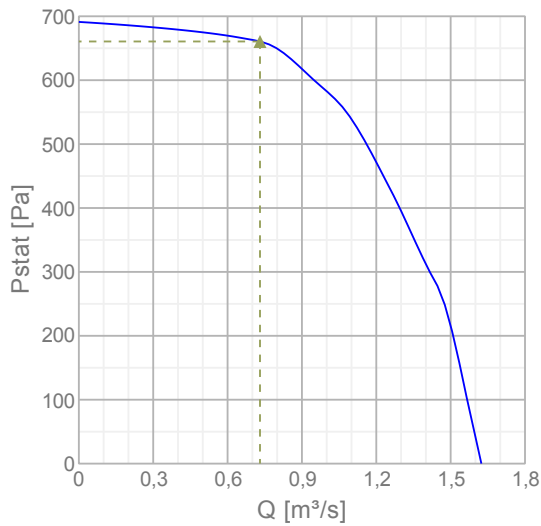
F

Enclosure class, motor

IP55

## Diagrams

### Diagrams



### Max efficiency

Hydraulic data	
▲ Working air flow	0,731 m³/s
▲ Working static pressure	661 Pa
▲ Power	1170 W
Speed	1478 r.p.m.
Current	2,93 A
SFP	1,6 W/(l/s)
Voltage	400 V

Name: **KBT 280D4 IE2 THERMO FAN** | Item no.: **77280**

Document type: **Product card** | Document date: **2019-07-16** | Generated by: **Online catalogue**

2 / 4

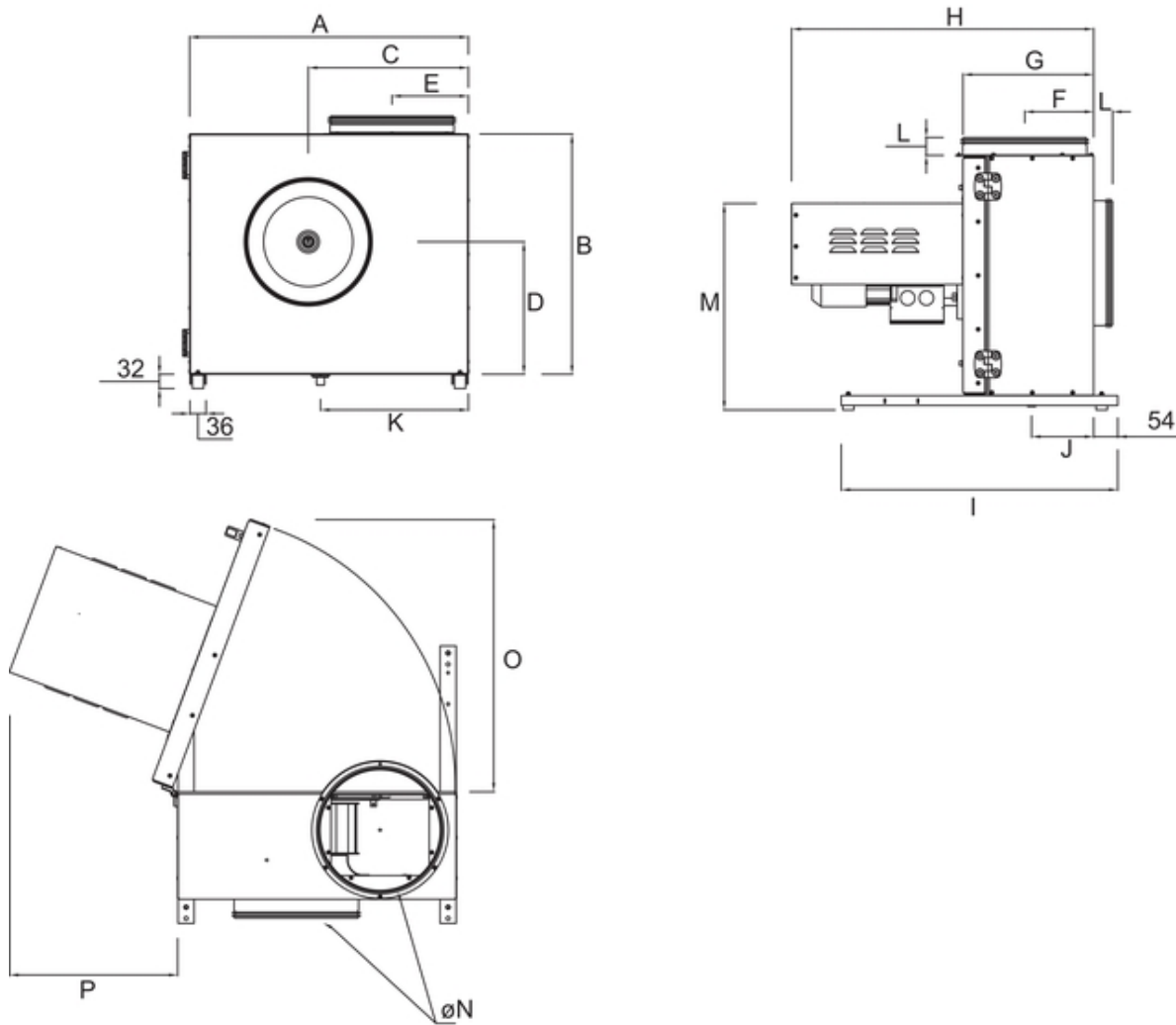
### Get In Touch

Call: [0845 6880112](tel:08456880112)  
Email: [info@adremit.co.uk](mailto:info@adremit.co.uk)

### Our Address

Puravent, Adremit Limited, Unit 5a, Commercial Yard,  
Settle, North Yorkshire, BD24 9RH

## Dimensions



	A	B	C	D	E	F	G	H	I	J	K	L	M	N	O	P
KBT 160	437	384	249	212	128	100	209	473	470	100	227	43	345	160	437	320
KBT 180	470	412	272	224	134	105	218	483	470	95	244	43	366	180	470	320
KBT 200	510	445	293	250	143	115	233	617	470	113	273	43	392	200	510	440
KBT 225	522	455	301	256	147	121	251	635	620	121	282	43	412	225	522	440
KBT 250	576	500	333	280	161	140	272	656	620	139	305	43	436	250	576	440
KBT 280	625	537	359	296	171	155	293	677	620	139	331	43	462	280	625	440

Name: **KBT 280D4 IE2 THERMO FAN** | Item no.: **77280**

Document type: **Product card** | Document date: **2019-07-16** | Generated by: **Online catalogue**

3 / 4

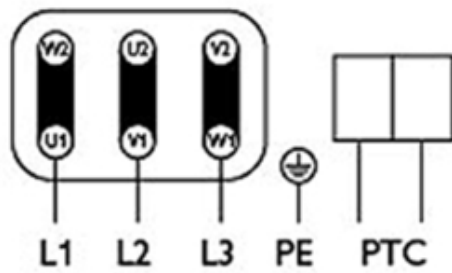
### Get In Touch

Call: [0845 6880112](tel:08456880112)  
 Email: [info@adremit.co.uk](mailto:info@adremit.co.uk)

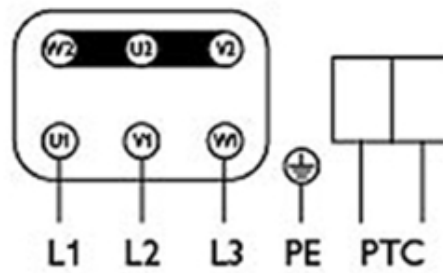
### Our Address

Puravent, Adremit Limited, Unit 5a, Commercial Yard,  
 Settle, North Yorkshire, BD24 9RH

**Dreiphasenmotor mit Kaltleiter**  
**Three phase motor with cold conductor**  
**Moteur triphasé avec résistance PTC**



3 x 230V  
 D Schaltung  
 Delta connection  
 Branchement en triangle



3 x 400V  
 Y Schaltung  
 Star connection  
 Branchement en étoile

**Drehrichtungsänderung durch Vertauschen von 2 Phasen**  
**Changing of direction of rotation by interchanging of two phases**  
**Changement de sens de rotation par inversion de deux phases**

**Typenschild beachten! See label! Voir plaque!**

**Accessories**


**Electric accessories**

- [Trigger unit U-EK230E \(30199\)](#)
- [REV-5POL/05 ON/OFF \(33979\)](#)
- [REV-9POL/12 ON/OFF \(33981\)](#)
- [REV-5POL/05 incl. EMC KIT \(34549\)](#)
- [FRQS-10A V2 \(36232\)](#)
- [FRQ-10A V2 \(36228\)](#)



**Accessories**

- [ASF 280/KB Flex. connection \(2717\)](#)
- [KBT 225/250/280 Wall bracket \(182813\)](#)

**Documentation**

-  [202341\\_Fans\\_Instructions\\_CE\\_A010.pdf \(1,83MB\)](#)

**Get In Touch**

-  **Call:** [0845 6880112](tel:08456880112)
-  **Email:** [info@adremit.co.uk](mailto:info@adremit.co.uk)

**Our Address**

Puravent, Adremit Limited, Unit 5a, Commercial Yard,  
 Settle, North Yorkshire, BD24 9RH