

ELECTRONICS COOLING

DISPLACEMENT FREE COOLING



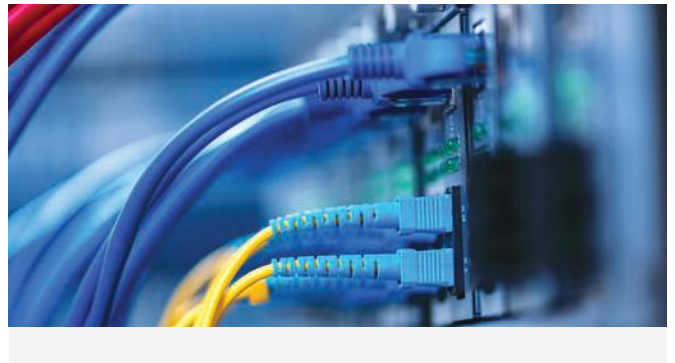
DFC 350
DFC 450

Controller

- Dantherm CC 3000 48V/230V – Dantherm developed, wall mounted
- Flexible configuration – live monitoring and configuration on any standard browser
- Energy-saving strategy – max. use of controlled ventilation
- Intelligent climate control – automated change of cooling mode
- Stable operation – step-less fan speed control
- User-friendly configuration – built-in SD card reader and digital colour display
- Service minimization – digital filter status detector
- Strategy evaluation/planning – complete data logging
- Communication: MODbus TCP/IP

Optional accessories

- AirMaze for DFC 350



Features

- Stay in control: total heat management with control of several external units
- Ensure energy-efficient cooling strategy – automatic change between cooling modes
- Protect your equipment – F5 displacement bag filter keeps your rooms clean
- Avoid unscheduled service visits – plan service with built-in filter monitor
- Wide geographical usage – ambient temperature operating range from -40 to 55°C
- Silent and energy-efficient – very low air flow and fan speed

Applications

- Radio base stations
- Telecom shelters
- Electronics enclosures
- Power supply rooms
- Network and computer rooms
- Automation control cabinets
- DC powered sites

Specifications	Units	DFC 350 48V DC (DC fan)	DFC 350 230V AC (EC fan)
Maximum air flow	m ³ /h	514	514
Max. cooling capacity	W/K	600	600
Cooling capacity up to 1.6m above floor at t=5°C	kW	3	3
Fan max. current	A	2.3	0.9
Max. power consumption	W	40	35
Sound level @ 5m	dB(A)	36	34
Product size (h x w x d)	mm	1982 x 385 x 166	1982 x 385 x 166
Weight	kg	10	10

Specifications	Units	DFC 450 48V DC (DC fan)	DFC 450 230V AC (EC fan)
Maximum air flow	m ³ /h	1100	1100
Max. cooling capacity	W/K	1000	1000
Cooling capacity up to 1.6m above floor at t=5°C	kW	5	5
Fan max. current	A	2.5	1.1
Max. power consumption	W	40	61
Sound level @ 5m	dB(A)	41	41
Product size (h x w x d)	mm	2096 x 486 x 238	2096 x 486 x 238
Weight	kg	13	13

Get In Touch

- Call: [0845 6880112](tel:08456880112)
Email: info@adremit.co.uk

Our Address

Puravent, Adremit Limited, Unit 5a, Commercial Yard, Settle, North Yorkshire, BD24 9RH