



PROFESSIONAL WATER DAMAGE DRYING

SIDE CHANNEL COMPRESSORS



RB 110



RB 80



RB 40

Features

- Casing and impeller made of light but rugged die-cast aluminium
- Installation possible in all axle positions
- Air-cooled and 100% oil-free
- Completely ready for connection are the RB-side channel compressors available in the AERIAL VP and AB Series

Optional accessories

- Mounting kit

Applications

- Cavity and insulation layer drying and restoration, vacuum cleaner, and similar



Specifications	Units	RB 40	RB 80	RB 110
Air flow	m³/h	75	144	144
Max difference pressure (vacuum)	mbar	100	160	190
Max difference pressure (pressure)	mbar	92	150	160
Motor power	W	380	800	1100
Operating temperature range	°C	3-32	3-32	3-32
Power supply	V/Hz	230/1ph/50	230/1ph/50	230/1ph/50
Sound level @ 3m	dB(A)	69	69	69
Power cord	m	Not included	Not included	Not included
Product size (h x w x d)	mm	257 x 279 230	303 x 238 x 255	303 x 238 x 255
Weight	kg	13	16	18.2

TO DRY

Get In Touch



Call: [0845 6880112](tel:08456880112)



Email: info@adremit.co.uk

Our Address

Puravent, Adremit Limited, Unit 5a, Commercial Yard, Settle, North Yorkshire, BD24 9RH



PROFESSIONAL WATER DAMAGE DRYING

SIDE CHANNEL COMPRESSORS



AB 200



Features

- Case made of stainless steel
- Service-friendly housing construction
- Rubber feet for installation on the floor or other flat surfaces
- Easy to carry by handle
- Coarse filter at suction side
- Very quiet due to highly efficient sound reduction system
- Integrated cable keeper

Control elements

- On/Off-switch
- Am`meter to show the counter pressure
- Device socket, fused 8A
- Energy counter (MID approved), currentless reading

Optional accessories

- Hose
- Fittings and connectors

Applications

- Insulating layer and cavity drying in the suction and discharge mode



Specifications	Units	AB 200
Blower type		Side channel blower
Air flow (free blowing)	m³/h	80
Max difference pressure (vacuum)	mbar	110
Max difference pressure (pressure)	mbar	130
Motor power	W	400
Operating temperature range	°C	0-38
Power supply	V/Hz	230/1ph/50
Sound level @ 3m	dB(A)	46
Power cord	m	4.5 with plug
Product size (h x w x d)	mm	330 x 310 x 365
Weight	kg	19

Get In Touch

Call: [0845 6880112](tel:08456880112)
 Email: info@adremit.co.uk

Our Address

Puravent, Adremit Limited, Unit 5a, Commercial Yard,
Settle, North Yorkshire, BD24 9RH





PROFESSIONAL WATER DAMAGE DRYING

AERCUBE SYSTEM

State-of-the-art technology with a whole new emphasis

VP 2/VP 3 side channel blower

The VP 2 and VP 3 side channel blowers operate with air-cooled side-channel compressors inside the extremely sturdy AERCUBE housing. Their outstanding reliability and energy-saving technology are the result of years of experience. The special eDRY® technology ensures that the drying technician is provided with only as much information as is needed to guarantee that the units always operate smoothly and efficiently.

VP 6 turbine

The use of brushless variable turbines reduces the weight of the VP 6 units by almost 50% over conventional sound boxes with side-channel blowers. The VP 6 unit's multi-stage control allows the required performance to be set precisely. Replace up to four different separate units with the VP 6 and reduce the amount of equipment needed.

As with all units in the AERCUBE range, the eDRY® electronic system also helps reduce the amount of work that drying engineers are required to carry out when the VP 6 is taken into operation, which allows them to concentrate on their actual task of repairing damage.

VT 2 water separator

The VT 2 water separator is equipped with a high-quality wastewater pump, which is also used in industrial applications. The special pump allows the VT to be used exclusively as a "water suction device". The VT 2's electronic self-levelling function switches the sound box off before the water is pumped off and back on again as soon as the built-in water container has been pumped empty.

The unit's sealed housing enables to be used when submerged in up to 30cm of water. Thanks to the perfect hygienic installation, cleaning can be carried out especially easily and thoroughly. Two quick-release safety catches provide easy access to the interior of the units. A drain plug in the foot of the unit allows any remaining water to drain off.



TO DRY

Get In Touch

Call: [0845 6880112](tel:08456880112)
Email: info@adremit.co.uk

Our Address

Puravent, Adremit Limited, Unit 5a, Commercial Yard,
Settle, North Yorkshire, BD24 9RH





PROFESSIONAL WATER DAMAGE DRYING RESTORATION



Features

- Air-cooled side-channel compressor, vibration-cushioned mounted
- 800 W or 1100 W motor output
- For drying areas from approx. 30-50m²
- Intelligent eDRY® electronics with full-text display
- Bar graph and multi-coloured LED for reading off the back pressure
- Operating hours and kWh counter can be read off when not connected to power
- Extremely quiet due to highly-efficient sound absorption technology
- Easy-to-open quick-release safety catches
- Wide choice of grip and carry options
- Heavy-duty power cord with magnet-holder, 4.5m
- Extremely robust AERCUBE housing
- Can be combined and stacked safely with all other products in the AERCUBE series. Fix points for AERCUBE lashing system

Optional accessories

- Adapter plate
- Lashing strap



Applications

- Building industry, restoration work
- Water damage restoration



Specifications	Units	VP 2	VP 3
Blower type		Side channel blower	Side channel blower
Air flow (free blowing)	m ³ /h	140	150
Max. difference pressure:			
Vacuum	mbar	140	170
Pressure	mbar	160	190
Motor power	W	800	1100
Operating temperature range	°C	0-38	0-38
Power supply	V/Hz	230/1ph/50	230/1ph/50
Sound level	dB(A)	48	57
Product size (h x w x d)	mm	507 x 390 x 455	507 x 390 x 455
Weight	kg	26.5	28.9

Get In Touch

 **Call:** [0845 6880112](tel:08456880112)
 **Email:** info@adremit.co.uk

Our Address

Puravent, Adremit Limited, Unit 5a, Commercial Yard,
Settle, North Yorkshire, BD24 9RH

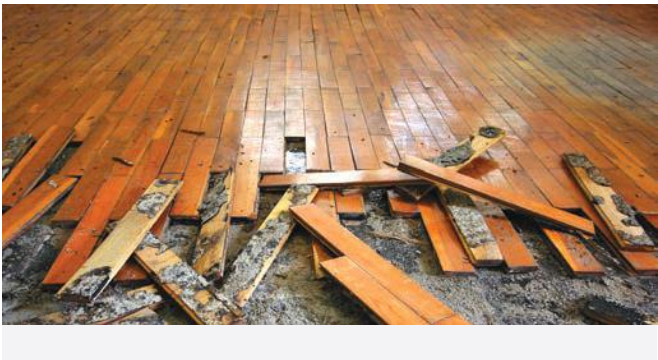




PROFESSIONAL WATER DAMAGE DRYING RESTORATION



VP 6



Features

- Multi-stage adjustable brushless turbine
- For drying areas of up to approximately 70m²
- Very low levels of sound
- Night mode
- Intelligent eDRY® electronic system with full-text display
- Bar graph and multicolour LED for displaying the counter-pressure
- Operating and kWh meter that displays without the unit having to be plugged in
- Safety shut down in the case of overloads
- The F7 cooling-air filter makes the unit hygienic and safe to operate
- Additional operational safety through integrated two-fold temperature monitoring
- Easy-to-open safety quick-release locks
- Wide choice of grip and carry options
- Heavy-duty power cord with magnet-holder, 4.5m
- Extremely robust AERCUBE housing
- Can be combined and stacked safely with all other products in the AERCUBE series. Fix points for AERCUBE lashing system

Optional accessories

- Adapter plate
- Lashing strap

Applications

- Building industry, restoration work
- Water damage restoration



Specifications	Units	VP 6
Blower type		Brushless high-performance turbine blower
Air flow (free blowing)	m³/h	80-250
Excess pressure	mbar	270
Low pressure	mbar	220
Motor power	W	1280
Operating temperature range	°C	0-35
Power supply	V/Hz	230/1ph/50
Sound level @ 3m	dB(A)	57
Product size (h x w x d)	mm	507 x 390 x 455
Weight	kg	15

TO DRY

Get In Touch

Call: [0845 6880112](tel:08456880112)
 Email: info@adremit.co.uk

Our Address

Puravent, Adremit Limited, Unit 5a, Commercial Yard,
Settle, North Yorkshire, BD24 9RH





PROFESSIONAL WATER DAMAGE DRYING RESTORATION



VT 2



Features

- High performance wastewater pump for industrial applications
- Static head max. 7m
- Full-text display shows all essential info on operating status
- Drain plug for quick and easy draining
- Easy-to-open quick-release safety catches
- Wide choice of grip and carry options
- Heavy-duty power cord with magnet-holder, 4.5m
- Extremely robust AERCUBE housing
- Displays the volume of pumped off water (total amount and per site, as well as the last time water was pumped off)
- Electronic self-levelling
- Press button to pump water off manually
- Can be combined and stacked safely with all other products in the AERCUBE series. Fix points for AERCUBE lashing system.

Optional accessories

- Adapter plate
- Lashing strap

Applications

- Building industry, restoration work
- Water damage restoration



Specifications	Units	VT 2
Pump type		Grundfos CC7
Conveyor volume	m³/h	9
Max. conveyor height	m	7
Tank volume	l	20
Operating temperature range	°C	3-38
Power consumption	W	380
Power supply	V/Hz	230/1ph/50
Product size (h x w x d)	mm	507 x 390 x 455
Weight	kg	18

Get In Touch

Call: [0845 6880112](tel:08456880112)
 Email: info@adremit.co.uk

Our Address

Puravent, Adremit Limited, Unit 5a, Commercial Yard,
Settle, North Yorkshire, BD24 9RH





PROFESSIONAL WATER DAMAGE DRYING RESTORATION



AERCUBE HEPA FILTER SYSTEM – HF 2

Features

- Efficient filter system with built-in H13 HEPA filter and G4 prefilter
- LED display informs when filter is contaminated
- Ready-to-connect, up to 270 m³/h air flow rate
- Easy-to-open quick-release safety catches
- Wide choice of grip and carry options
- Heavy-duty power cord with magnet-holder, 4.5m
- Extremely robust AERCUBE housing
- Press button to check battery status

Optional accessories

- Adapter plate
- Lashing strap



AERCUBE SOUND ABSORBER – SD 2

Features

- Reduces the noise level by as much as 19 dB
- Optional active charcoal filter to remove odours
- Ready-to-connect, up to 220 m³/h air flow rate
- Easy-to-open quick-release safety catches
- Wide choice of grip and carry options
- Heavy-duty power cord with magnet-holder, 4.5m
- Extremely robust AERCUBE housing

Applications

- Building industry, restoration work
- Water damage restoration



Specifications	Units	HF2
Inserted air filter		Each 1 pc. is included with the delivery: – prefilter G4 – HEPA-Filter H13 acc. EN1822 (Separation MPPS > 99.95%)
Max. air flow	m³/h	270
Control/operation		LED indicator for filter change and button for battery check
Product size (h x w x d)	mm	260 x 390 x 490
Weight	kg	6

Specifications	Units	SD 2
Max. air flow	m³/h	220
Product size (h x w x d)	mm	300 x 390 x 490
Weight	kg	6

TO DRY

Get In Touch

Call: 0845 6880112
 Email: info@adremit.co.uk

Our Address

Puravent, Adremit Limited, Unit 5a, Commercial Yard, Settle, North Yorkshire, BD24 9RH

