



**REGISTER
YOUR WARRANTY
ONLINE AT
www.sanuvovx.com**

BIO-WALL™ AIR DISINFECTION SYSTEM Commercial Model



IMPORTANT SAFETY INSTRUCTIONS

READ AND SAVE THESE SAFETY INSTRUCTIONS BEFORE USING THIS PRODUCT.



Read and follow all instructions contained in the manual before using the product. Read the maintenance instructions before opening the UV unit or system. Failure to comply with these instructions may result in injuries or damage to the UV unit or system.

NEVER EXPOSE EYES OR SKIN TO AN OPERATING UV LAMP.

1. **Installation and servicing** of UV units or systems (in an air conditioning system or not) **can be hazardous. Only trained and qualified service personnel** should install, repair or service equipment.
2. **Untrained personnel** can perform **basic maintenance** functions such as replacing lamp(s) and/or filter(s). All other operations should be performed by trained service personnel.
3. The unit is not to be used by persons (including children) with reduced physical, sensory or mental capabilities, or lack of experience and knowledge.
CAUTION: Unit is not a toy. Keep away from unsupervised children. Do not leave children unattended with the unit.
4. **DO NOT hang onto the UV unit or system.**
5. Some UV units or systems could be heavy: Make sure you have a minimum of 2 people to safely move or install these UV units or systems, and make sure you adopt the most ergonomic position possible (use UV unit or system handles, if applicable).
CAUTION: Installing or maintaining heavy equipment, especially overhead, can cause back pain or other injuries.
6. When installing or servicing an overhead UV unit or system, be careful not to fall off the stepladder. Furthermore, make sure the UV unit or system latches are always in place to prevent falling parts.
CAUTION: Some parts of some UV units and systems may open suddenly if the UV unit or system is installed high up without its locks.
- 6.1. THIS AIR CLEANER SHALL NOT BE INSTALLED ON THE HOT-AIR SIDE OF DUCT-TYPE SYSTEMS.
7. Units that are obviously damaged must not be operated.
8. **CAUTION: When working on the UV unit or system, observe precautions on the literature, tags and labels attached to the UV unit or system, and all other safety precautions considered as best practices in the HVAC industry, if applicable.**
9. When applicable, local regulation may comprise more restrictive installation and/or certification requirements. The aforementioned requirements prevail on those of this document and the installer agree to conform to these at his own expense.
10. Follow all the safety instructions outlined in this document and respect all local and national codes applicable.
11. All UV units or systems contain a UV-C source. Damage to the housing or unintended use of the UV unit or system may result in harmful UV-C leaks. UV-C may, even in little doses, cause harm to the eyes and skin.
12. **Never expose eyes or skin to an operating UV lamp.** Therefore, **before installing or performing maintenance** on the UV unit or system, **TURN OFF AND DISCONNECT** the UV unit or system **from all power sources** (there may be more than one switch to disconnect) and also disconnect the HVAC system, is applicable.
CAUTION: Electrical shock may cause injuries or possibly death. **FIRST AID INSTRUCTIONS:** If injured, consult a doctor.
13. UV rays may damage certain types of filters (polymer or plastic); please keep the UV unit or system light away from shining directly on plastic.
14. When installing or performing maintenance on the UV unit or system, it is recommended to **wear safety gloves**. In order to avoid reduced performance of lamp(s), **do not touch lamp glass without gloves**.
15. Just like conventional fluorescent lamps, UV lamps contain a small quantity of mercury: if a lamp breaks, clean and **dispose of with care**. UV lamps can be disposed/recycled after use in the same way as any other fluorescent lamps. Contact and follow the specific instructions of your local and national authorities.
16. **Use only specified SANUVOX branded replacement UV lamps for your UV unit or system.** Use of any other lamps will void your warranty and can result in damage to the UV unit or system.
17. Sanuvox UV units or systems are not waterproof. **DO NOT INSTALL OUTDOORS OR IN WET LOCATION** unless specified otherwise.
18. The use of a UV unit or system is a supplement to and not a substitute for standard infection control practices; users must continue to follow all current infection control practices, including those related to the cleaning and disinfection of environmental surfaces.

SAVE THESE INSTRUCTIONS

For any inquiries on a UV unit or system, contact:
Robert Smith
146 Barr St, Saint-Laurent
Quebec, CA, H4T 1Y4
1-888-726-8869
techsupport@sanuvovx.com

Installation Date: _____ **Installed by:** _____

Installer Contact Info.: _____

Sanuvox Technologies Inc, © 2019 All rights reserved. January 2023 EN v.2



Get In Touch

Call: 0845 6880112
 Email: info@adremit.co.uk

Our Address

Puravent, Adremit Limited, Unit 5a, Commercial Yard,
Settle, North Yorkshire, BD24 9RH



TABLE OF CONTENTS

△ IMPORTANT SAFETY INSTRUCTIONS △	1
TABLE OF CONTENTS	2
ABOUT THE PRODUCT	3
AVAILABLE MODELS	3
COMPONENTS	3
How it Works	3
ACCESSORIES & KITS	4
SETUP & INSTALLATION	4
What you will need	4
What's included	4
Setup	4
Step by Step Installation	5
ELECTRICAL DIAGRAM	9
OPERATION	11
How to Operate your Product	11
The 3 Operation Modes	11
Step by Step Change of Operation Mode	12
Remote control (BMS) or limit switch on access door	12
MAINTENANCE	13
How to Replace Lamp(s)	13
Step by Step Lamp Replacement	13
Step by Step Lamp Timer Reset	14
How to Clean your Product	14
STORAGE	14
ULTRAVIOLETS: UVC	14
ELECTRICAL RATINGS, POWER CONSUMPTION & AVAILABLE VOLTAGE	14
RANGE OF ENVIRONMENTAL CONSIDERATIONS	15
TROUBLESHOOTING	15
What you will need	15
Access to LEDs	15
Problems & Solutions Table	15
WARRANTY	16
CUSTOMER SERVICE	16

Get In Touch

 **Call:** 0845 6880112
 **Email:** info@adremit.co.uk

Our Address

Puravent, Adremit Limited, Unit 5a, Commercial Yard,
 Settle, North Yorkshire, BD24 9RH





ABOUT THE PRODUCT

Congratulations on the purchase of the Sanuvox BIO-WALL™ UV air disinfection system. Sanuvox systems are the most advanced air purification systems available, having been proven to deactivate up to 99.9999% of biological and chemical contaminants that circulate throughout the building or facility. Sanuvox systems have been tested by Medical Universities and Independent 3rd Party Laboratories.

Engineered and assembled in Montreal (Quebec), Canada, Sanuvox products are carefully crafted to deliver to you the best that UV air purification can offer, and to improve your air quality.

The BIO-WALL™ offers many advantages such as: single multi-voltage ballast used for all models, BMS control/data and distant monitoring, ballast box air cooling system and availability of an optimal BioSmart screen to interface with the control circuit.

For information or recommendations on how to size your specific application, please call SANUVOX at 1-888-726-8869.

AVAILABLE MODELS

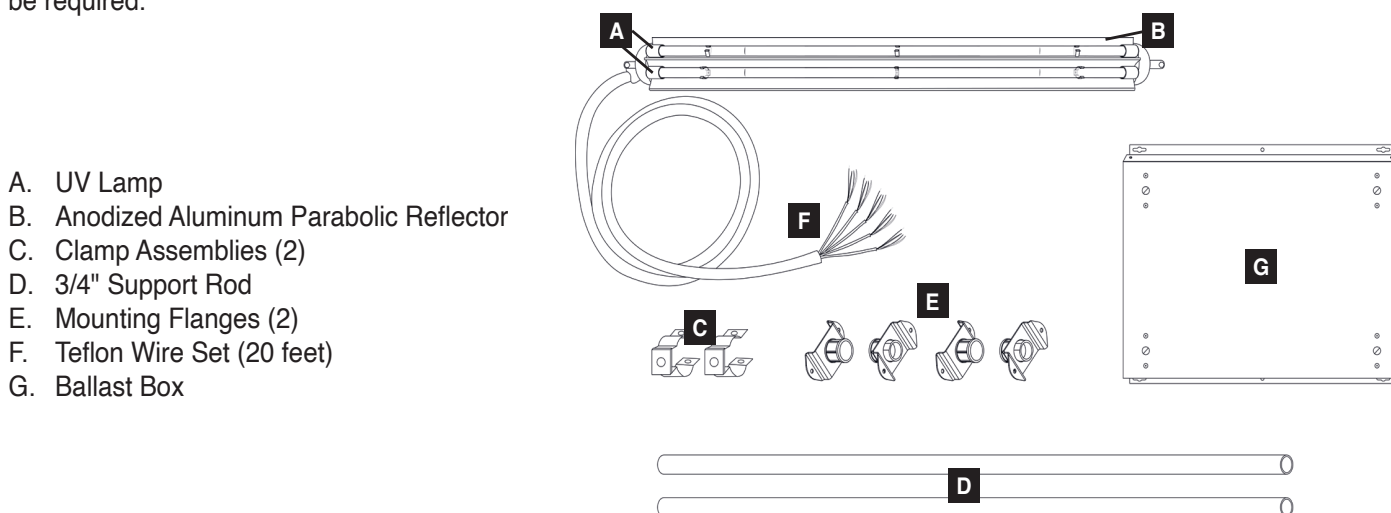
Models	Description
BIOM18G	18" High Intensity 5 UV Lamps Disinfection System
BIOM24G	24" High Intensity 5 UV Lamps Disinfection System
BIOM30G	30" High Intensity 5 UV Lamps Disinfection System
BIOM40G	40" High Intensity 5 UV Lamps Disinfection System
BIOM50G	50" High Intensity 5 UV Lamps Disinfection System
BIOM60G	60" High Intensity 5 UV Lamps Disinfection System

COMPONENTS

How it Works

The BIO-WALL™ is specifically designed to help reduce biological contaminants such as mold, bacteria and viruses that may be circulated through the HVAC system of the building or facility.

The BIO-WALL™ is installed in the RETURN (preferred) or SUPPLY plenum of the HVAC system purifying the air passing through the air duct. The actual percentage of destruction obtained is based on the duct size, percentage of fresh air, velocity, the number of passes and specific contaminants to be treated. Depending on these variables, more than one BIO-WALL™ may be required.



- A. UV Lamp
- B. Anodized Aluminum Parabolic Reflector
- C. Clamp Assemblies (2)
- D. 3/4" Support Rod
- E. Mounting Flanges (2)
- F. Teflon Wire Set (20 feet)
- G. Ballast Box

Get In Touch

Call: 0845 6880112
 Email: info@adremit.co.uk

Our Address

Puravent, Adremit Limited, Unit 5a, Commercial Yard,
 Settle, North Yorkshire, BD24 9RH





ACCESSORIES & KITS

The following optional accessories and/or kits work great with your product (sold separately).

BioSmart Screen
BIOSCREEN



7" touch screen informing the user in real time.
Sold with a 20' Ethernet cable and a grommet.

Interlok Switch
MSCSWC14



The interlok switch will shut down the BIO-WALL™ operation should the access door be opened.

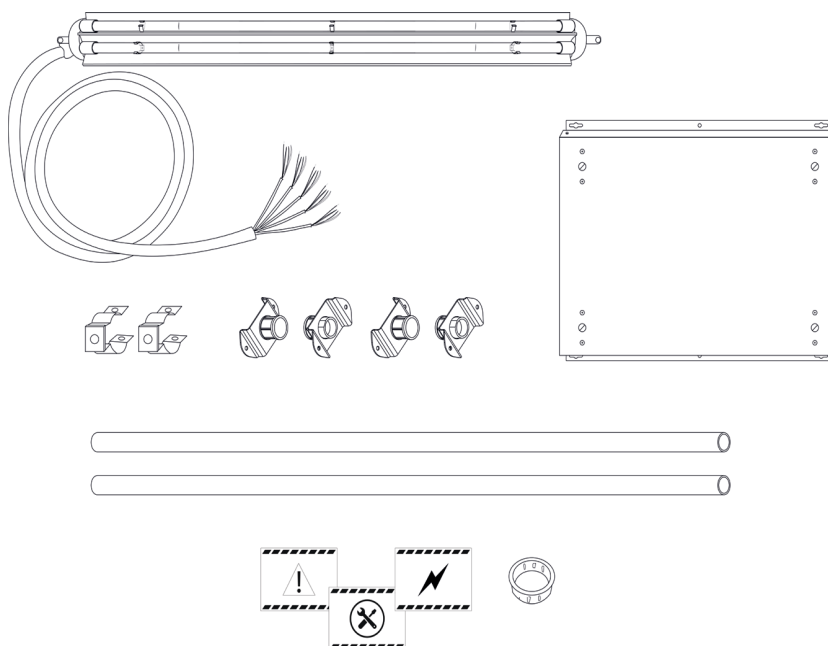
For instruction manuals or information about your optional accessories and/or kits, please call SANUVOX at 1-888-726-8869 or visit www.sanuvorex.com.

SETUP & INSTALLATION

What you will need

A knife to unpack all the components, a drill with 1/8 and 1/2 bits, an iron saw, a Phillips #2 screwdriver, a nutdriver key with 11/32 and 1/4 sockets.

CAUTION: Handle your product with care to avoid breaking parts. Make sure you have a free and safe space to unpack, install and setup your product. Confirm you have access to the necessary power source for the product requirements (see unit or system label). If you have any questions regarding the installation instructions, call SANUVOX at 1-888-726-8869.



What's included

The BIO-WALL™ (lamp reflector assembly with 10' cable), a ballast box, mounting clips (2), support flanges (4), support rods (2) and a basic installation kit.

The installation kit includes: a UV caution decal, a maintenance decal, a wiring diagram and a snap bushing.

Setup

While selecting the appropriate location for your BIO-WALL™, refer to your customized sizing and placement proposal. If you do not have the customized proposal, call SANUVOX at 1-888-726-8869 to obtain one at no-charge.

The ballast boxes are to be installed on the outside of the air central in a dry area.

CAUTION: Make sure the site can be supplied with the necessary power requirements. Ensure that there is adequate clearance for service and maintenance.

Get In Touch

Call: 0845 6880112
Email: info@adremit.co.uk

Our Address

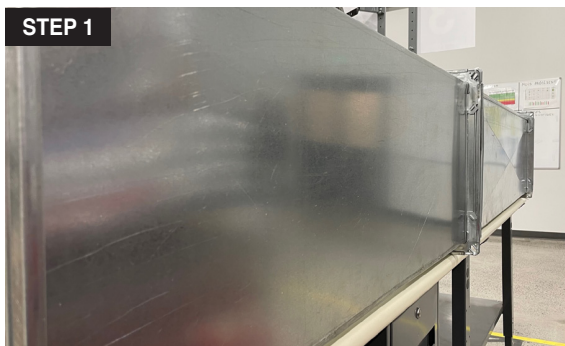
Puravent, Adremit Limited, Unit 5a, Commercial Yard,
Settle, North Yorkshire, BD24 9RH





Step by Step Installation

STEP 1



1. **Select where the BIO-WALL™ extrusion will be installed.** The location requires a straight duct of a minimum length without obstruction. Refer to the table below according to the length of the BIO-WALL™ to be installed.

Model	Length required for installation	Distance between support rods
BIOM18	28" (71 cm)	25.25" (64 cm)
BIOM24	34" (86 cm)	31.25" (80 cm)
BIOM30	40" (102 cm)	37.25" (94.5 cm)
BIOM40	50" (127 cm)	47.25" (120 cm)
BIOM50	60" (152 cm)	57.25" (145.5 cm)
BIOM60	70" (178 cm)	67.25" (171 cm)

NOTE: The BIO-WALL™ can be installed in the return plenum or in the supply duct indistinctly. In any case, the extrusion must be positioned parallel to the airflow and in the center of the ventilation duct.

STEP 2



2. **Select the location where the ballast box will be installed.** Often the ballast box is installed on the conduit or on one of the sides. You can install it on a nearby wall, but make sure of the distance: you only have 3 m of cable between the box and the extrusion.

NOTE: Operating information can be provided in 2 ways: via dry contacts that relay data to a BMS or via a BioSmart touch screen (optional) that can be installed up to 100 feet (32m) away.

STEP 3

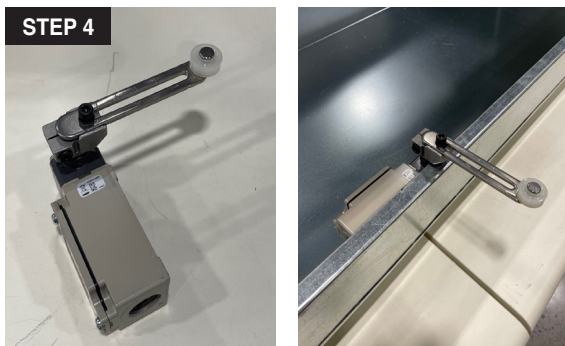


Examples of access doors

3. **Install an access door on the section that will receive the BIO-WALL™ extrusion.** The size of the access door will be determined by the height of the duct.

NOTE: The access door must be able to uncover the upstream section of the BIO-WALL™, so that the lamp connectors are directly in front of the opening. So that when it comes time to change the lamps, this operation can be done easily.

STEP 4



4. **Install a limit switch on the access door.** This will automatically cut off the power supply to the system if someone inadvertently opens the door. In this way, anyone is protected from being exposed to UV rays.

NOTE: The switch must be approved in the country where the installation is made and must have the following characteristics: insulation of 600 volts and 500,000 cycles of operation.

In Canada and the USA, the MSCSWC14 switch is available from SANUVOX.

Get In Touch

Call: 0845 6880112
Email: info@adremit.co.uk

Our Address

Puravent, Adremit Limited, Unit 5a, Commercial Yard, Settle, North Yorkshire, BD24 9RH





STEP 5



Assemble BIO-WALL™ Supports

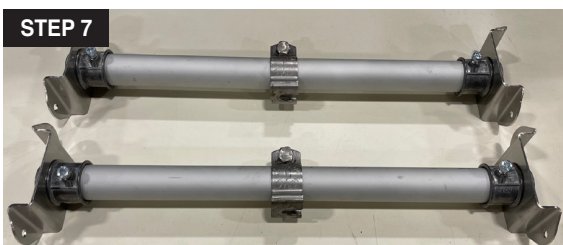
5. Start by measuring the height of the duct. Then cut two pieces of support pipe this height – minus 1.5" (3.8 cm) to accommodate the mounting flanges.

STEP 6



6. Insert a clamp assembly on each section and tighten it in the center with the bolts provided for this purpose.

STEP 7



7. Attach the mounting flanges to each end of the pipes and tighten them in place.

STEP 8 & 9

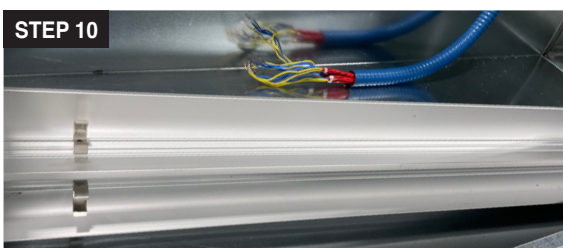


Install 2 Assembled Supports in Duct

8. Knowing the total length of your installation (see the table in step 1), attach the pipe furthest downstream, in the center of the conduit. Screw it in place, making sure that the clamp is in the center of the pipe, facing you and its opening facing up.

9. Attach the 2nd pipe, the one closest to your access door, by distancing it from the other according to the table in step 1. Screw it in place, making sure that the fixing clamp is in the center of the hose, pointing towards you and its opening facing upwards.

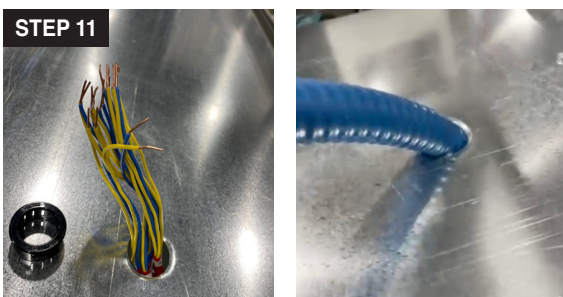
STEP 10



Install Extrusion and Lamps onto Clamps

10. Without removing the film that protects the lamps, take the extrusion by the side of the power cable and insert everything into the duct: place the extrusion at the bottom of the duct.

STEP 11



11. Having determined where the ballast box will be installed, drill a 1.125" (2.85 cm) hole in the conduit to bring the cable through.

NOTE: Put the supplied plastic grommet in the hole to protect the cable.

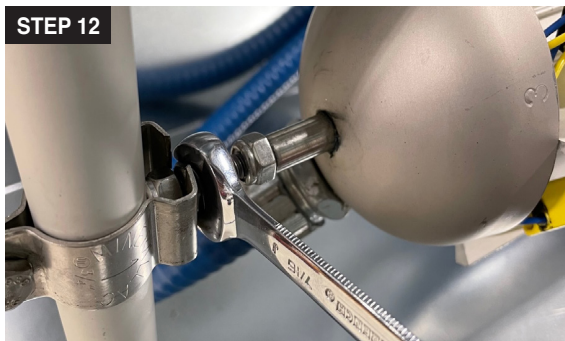
Get In Touch

Call: 0845 6880112
 Email: info@adremit.co.uk

Our Address

Puravent, Adremit Limited, Unit 5a, Commercial Yard,
Settle, North Yorkshire, BD24 9RH

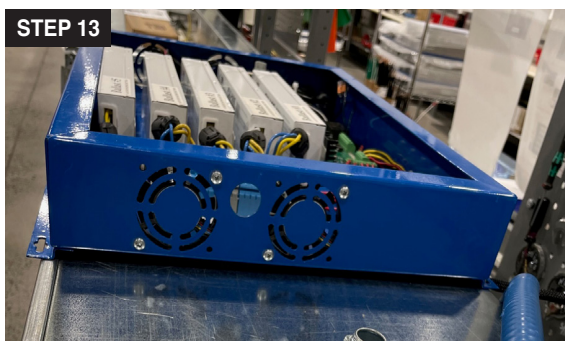




12. Slip the end of the cable through the hole and gently pull the cable out of the conduit.

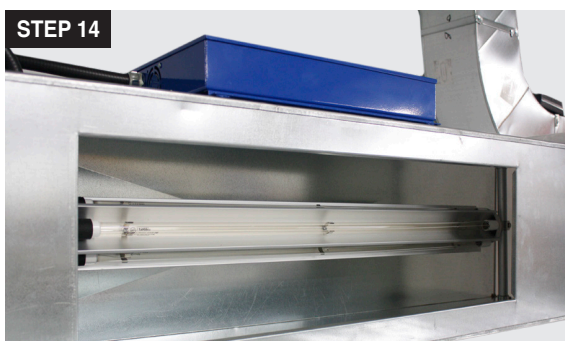
NOTE: At some point, you will be in a position to lift the extrusion and gently slide it into the mounting clips. Be sure to leave some slack in the cable inside the conduit.

You can now tighten the nuts that hold the extrusion into the clamps.

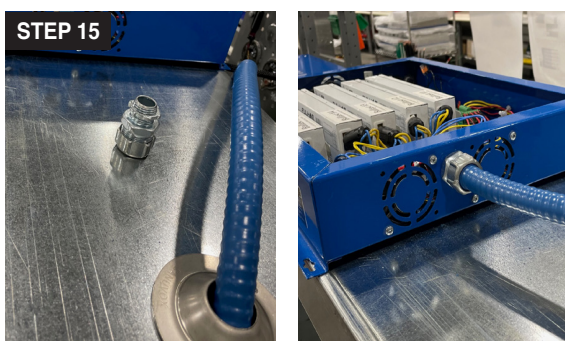


Install Ballast Box on Selected Surface

13. Remove the case cover by turning the 4 screws to the left. Lay it aside.

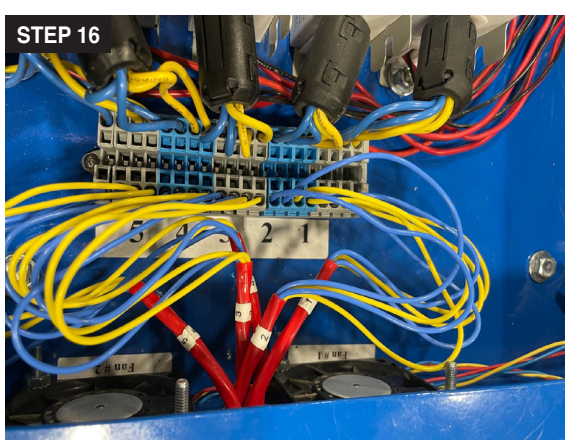


14. Fix the box to the surface using the 6 self-tapping screws provided. The box can be installed vertically or horizontally. Make sure the box is within reach of the wire for the connection.



Connect Cable to Ballast Box

15. Remove the ring from the connector and pass the end of the cable through the opening provided in the box, between the two fans. Secure it in place by putting the ring back in place. The rest of the cable should be secured in place with clamps (not supplied).



16. The section of the cable in the box is made up of 20 wires, ie 5 wires of 4 strands – 2 red and 2 blue. Just nearby is a terminal block to which the 5 ballasts are connected, the first being at the very bottom.

Select the wire identified #1, separate the red and blue strands and plug them separately into the section of the terminal block relating to ballast #1. Be sure to plug the red wires into the sections adjoining the red wires and the blue ones the same, adjoining the blue wires.

NOTE: To simplify your task, you can use a mini flat-blade screwdriver: if you push it into the square opening at the side of the wire, the insertion or removal of the wire will be easier. If you remove the blade, the wire will get stuck.

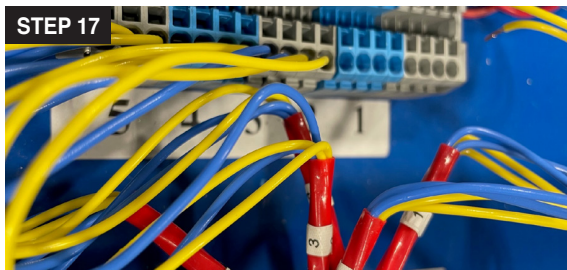
Get In Touch

Call: 0845 6880112
Email: info@adremit.co.uk

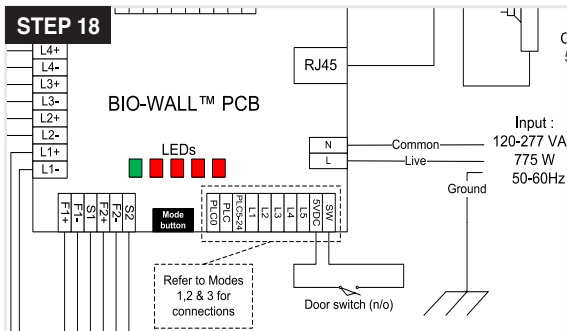
Our Address

Puravent, Adremit Limited, Unit 5a, Commercial Yard,
Settle, North Yorkshire, BD24 9RH





17. Pull on each wire to ensure a firm connection, then repeat steps 15-16-17 for the next 4 segments.

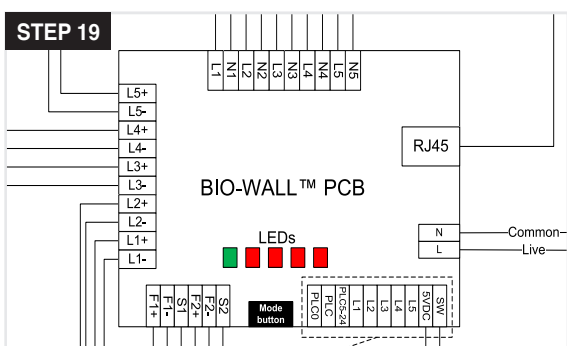


Connect Limit Switch to 5 VDC Circuit

18. Referring to the electrical diagram, identify the SW and 5 VDC terminals on the electronic board terminal block.

Insert two control wires into it and connect them to the limit switch. In this way, if the switch is activated, the electronic circuit will cut off the power supply.

NOTE: Remember to put the YELLOW WARNING stickers on the access door.



Interconnection to Building Management System (BMS) or BioSmart Touch Screen (optional)

NOTE: The addition of control wires or a touch screen is not necessary for the operation of the BIO-WALL™.

19. If you have purchased a BioSmart touch screen, now is the time to connect it to your ballast box. Follow the instructions provided with the screen.

NOTE: Each BioSmart display has been configured for a specific BIO-WALL™. Be sure to identify the correct one.

Furthermore, if you wish to share the information with a management controller, SANUVOX offers 3 BMS operating modes: an external 24 VDC power supply will be required. Please refer to the "OPERATION" section.



Certified Electrician Required to Power Ballast Box

20. The power supply can be 120V or 240V (optional), to a circuit breaker with a minimum of 10A. You only have to connect the black and white wires as well as the ground.

NOTE: In certain circumstances, a manual circuit breaker can also be installed near the ballast box.

Once the power is supplied, replace the cover and secure it in place by turning the 4 screws to the right.

You are now ready to enjoy superior indoor air quality and safety.

Get In Touch

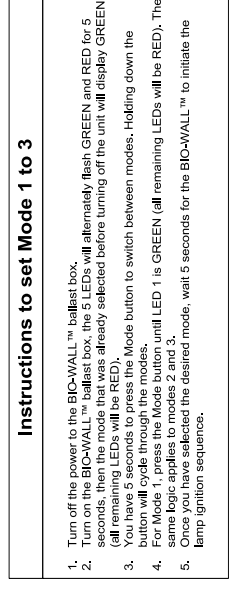
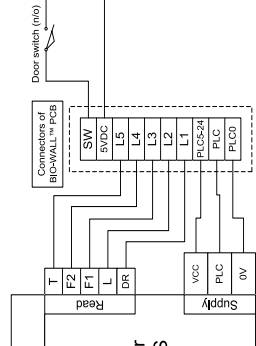
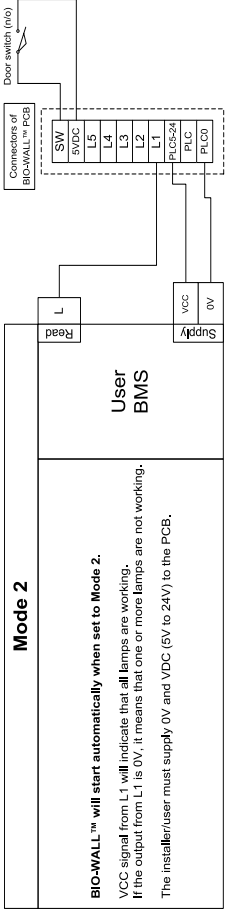
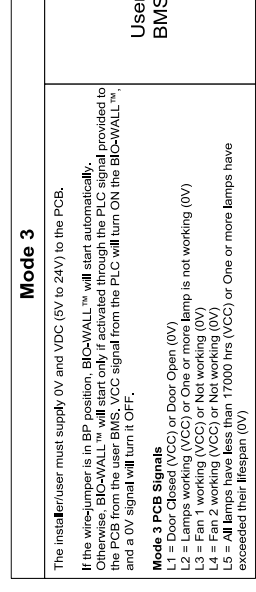
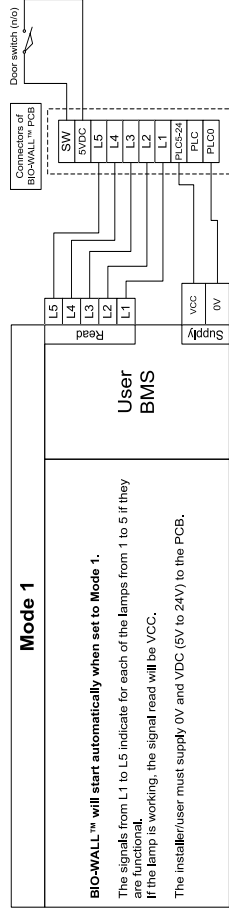
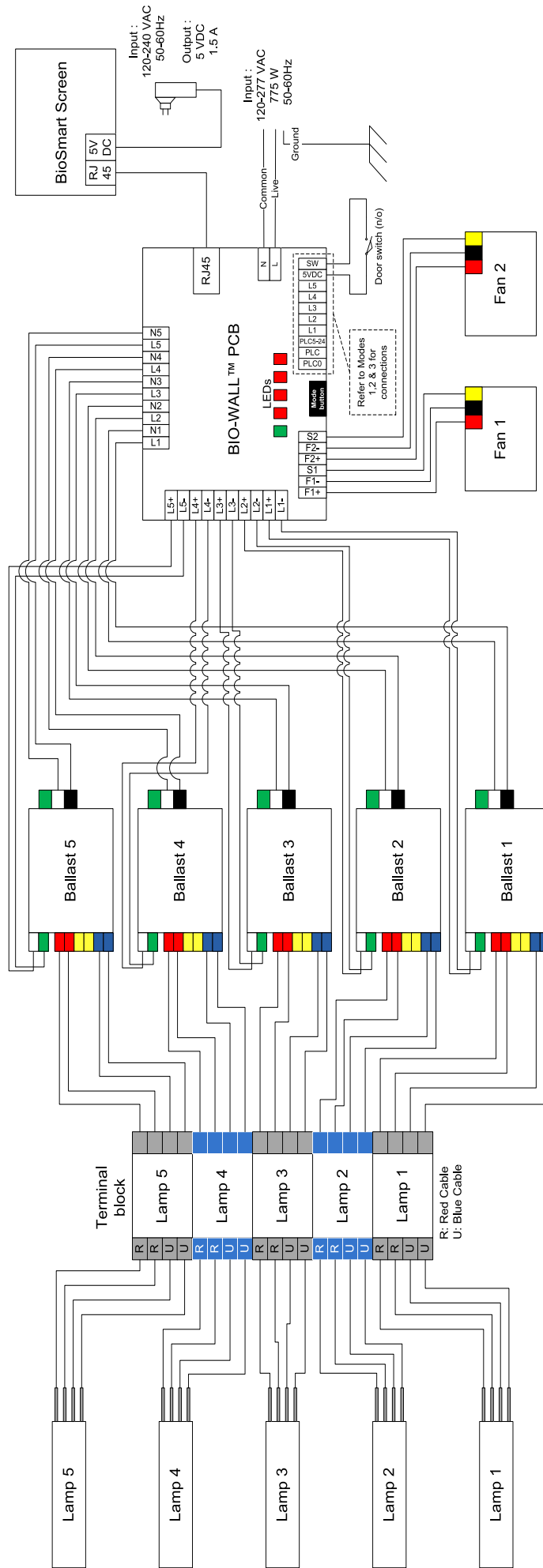
Call: 0845 6880112
Email: info@adremit.co.uk

Our Address

Puravent, Adremit Limited, Unit 5a, Commercial Yard, Settle, North Yorkshire, BD24 9RH



ELECTRICAL DIAGRAM



Mode 1

BIO-WALL™ will start automatically when set to Mode 1.
The signals from L1 to L5 indicate for each of the lamps from 1 to 5 if they are functional.
If the lamp is working, the signal read will be VCC.
The installer/user must supply 0V and VDC (5V to 24V) to the PCB.

Mode 3

The installer/user must supply 0V and VDC (5V to 24V) to the PCB.
If the wire-jumper is in BP position, BIO-WALL™ will start automatically. Otherwise, BIO-WALL™ will start only if activated through the PLC signal provided to the PCB from the user-BMS. VCC signal from the PLC will turn ON the BIO-WALL™, and a 0V signal will turn it OFF.

Mode 3 PCB Signals
L1 = Door Closed (VCC) or Door Open (0V)
L2 = Lamps working (VCC) or One or more lamp is not working (0V)
L3 = Fan 1 working (VCC) or Not working (0V)
L4 = Fan 2 working (VCC) or Not working (0V)
L5 = All Lamps have less than 17000 hrs (VCC) or One or more lamps have exceeded their lifespan (0V)

Mode 2

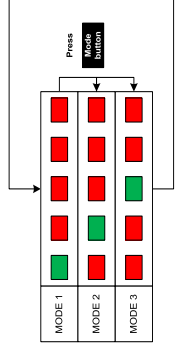
BIO-WALL™ will start automatically when set to Mode 2.
VCC signal from L1 will indicate that all lamps are working.
If the output from L1 is 0V, it means that one or more lamps are not working.
The installer/user must supply 0V and VDC (5V to 24V) to the PCB.

Instructions to set Mode 1 to 3

1. Turn off the power to the BIO-WALL™ ballast box.
2. Turn on the BIO-WALL™ ballast box, the 5 LEDs will alternately flash GREEN and RED for 5 seconds, then the mode that was already selected before turning off the unit will display GREEN (all remaining LEDs will be RED).
3. You have 5 seconds to press the Mode button to switch between modes. Holding down the button will cycle through the modes.
4. The same logic applies to modes 2 and 3. Until LED 1 is GREEN (all remaining LEDs will be RED). The same logic applies to modes 2 and 3.
5. Once you have selected the desired mode, wait 5 seconds for the BIO-WALL™ to initiate the lamp ignition sequence.



Instructions to reset Lamp Timer

1. Press and hold the Mode button until the LEDs flash RED, then turn GREEN.
2. The countdown of all lamps is reset to 17000 hrs.





Get In Touch

 **Call:** [0845 6880112](tel:08456880112)
 **Email:** info@adremit.co.uk

Our Address

Puravent, Adremit Limited, Unit 5a, Commercial Yard,
Settle, North Yorkshire, BD24 9RH



OPERATION

How to Operate your Product

The BIO-WALL™ integrates dry contacts to communicate with a building management PLC. However, you must choose between 3 operating modes.

CAUTION: The recommended operating temperature is between 4 to 66°C (40 to 150°F). Using the BIO-WALL™ outside of this temperature range may reduce its performance. For optimum performance, the air temperature in the duct should be between 15 to 20°C (60 to 70°F).

The 3 Operation Modes

Note that by default following installation, the BIO-WALL™ starts in Mode 2.

MODE 1

BIO-WALL™ will start automatically when set to Mode 1.

The signals from L1 to L5 indicate for each of the lamps from 1 to 5 if they are functional.

If the lamp is working, the signal read will be VCC.

The installer/user must supply 0V and VDC (5V to 24V) to the PCB.

NOTE: For the BIO-WALL™ to work in Mode 1, it is necessary that 7 wires are connected between the electronic card and the BMS.

MODE 2

BIO-WALL™ will start automatically when set to Mode 2.

VCC signal from L1 will indicate that all lamps are working.

If the output from L1 is 0V, it means that one or more lamps are not working.

The installer/user must supply 0V and VDC (5V to 24V) to the PCB.

NOTE: For the BIO-WALL™ to work in Mode 2, it is necessary that 3 wires are connected between the electronic card and the BMS.

MODE 3

The installer/user must supply 0V and VDC (5V to 24V) to the PCB.

If the wire-jumper is in BP position, BIO-WALL™ will start automatically.

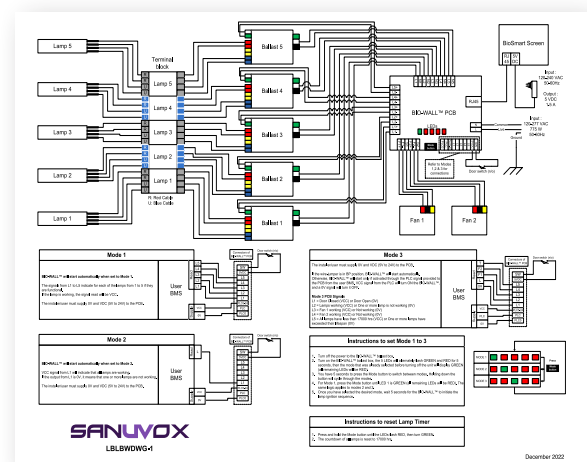
Otherwise, BIO-WALL™ will start only if activated through the PLC signal provided to the PCB from the user BMS. VCC signal from the PLC will turn ON the BIO-WALL™, and a 0V signal will turn it OFF.

NOTE: For the BIO-WALL™ to work in Mode 3, it is necessary that 8 wires are connected between the electronic card and the BMS.

Mode 3 PCB Signals

- L1 = Door Closed (VCC) or Door Open (0V)
- L2 = Lamps working (VCC) or One or more lamp is not working (0V)
- L3 = Fan 1 working (VCC) or Not working (0V)
- L4 = Fan 2 working (VCC) or Not working (0V)
- L5 = All lamps have less than 17000 hrs (VCC) or One or more lamps have exceeded their lifespan (0V)

Refer to the pull-out diagram on the previous page for more information.



Get In Touch

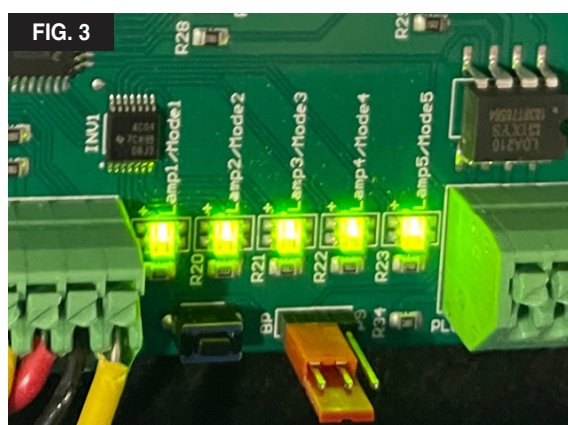
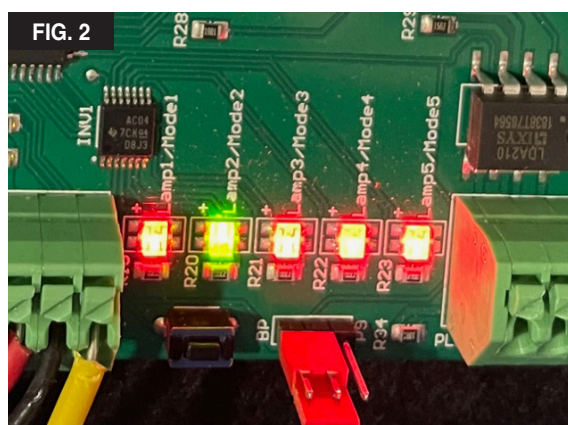
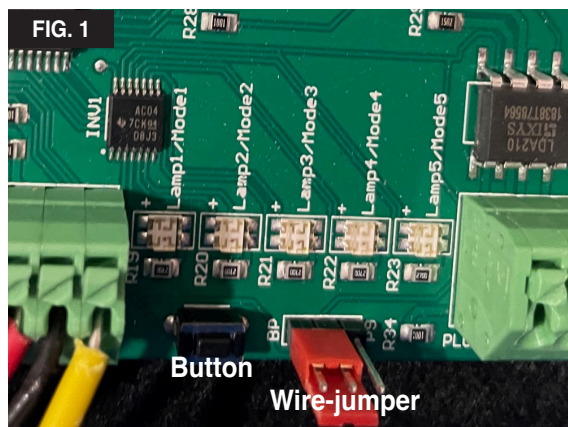
Call: 0845 6880112
 Email: info@adremit.co.uk

Our Address

Puravent, Adremit Limited, Unit 5a, Commercial Yard,
 Settle, North Yorkshire, BD24 9RH



Step by Step Change of Operation Mode



By default

1. Turn off the power at the ballast box.
2. Remove the cover by turning the 4 screws to the left.
3. Locate the section in **Figure 1**.
4. **Turn power back on:** all LEDs will flash for 5 seconds. Then, a specific sequence will be displayed in RED and GREEN for 5 seconds to indicate the selected operation mode:

Mode 1	G	R	R	R	R
Mode 2	R	G	R	R	R
Mode 3	R	R	G	R	R

The second LED will be GREEN (see **Figure 2**) to indicate that the BIO-WALL™ is in Mode 2, which is the default mode.

5. After this last 5 seconds, all LEDs will turn GREEN (see **Figure 3**) to indicate that the mode is saved.

To change the mode

1. Repeat steps 1-4 above.
2. While the mode sequence is displayed (you have 5 seconds), press the button: each time, you will change modes.
3. When you have selected the desired mode, wait 5 seconds for it to be saved.

Remote control (BMS) or limit switch on access door

A wire jumper is factory-installed on the PLC and PLC24 terminals: this configuration automatically turns on the lamps when the box is powered.

If you want to turn on the lamps remotely, remove the wire jumper and connect a pair of wires to these contacts: sending a 5V - 24 VDC signal will turn on the lamps and its interruption (0V) will turn them off.

You can also, for added security, connect these wires to a limit switch on the access door, which will only require a 5V supply.

⚠ CAUTION: In Mode 3, if you wish to light the lamps with the BMS, you must move the jumper to the right (see **Figure 1** of 'Step by Step Change of Operation Mode') and connect your wires to the PLC contact and 0V.



MAINTENANCE

How to Replace Lamp(s)

Lamps should be replaced every 2 years to maintain design specifications. Replacing the lamps of a BIO-WALL™ is quick and easy. Turn off the power source. Remove and dispose of old lamps as you would regular fluorescents. Replace new SANUVOX brand UV lamps. Turn the power source back on. See below for detailed step-by-step instructions.

⚠ CAUTION: In order to avoid reduced performance of lamp(s), do not touch lamp glass without gloves.

Step by Step Lamp Replacement



STEP 2

1. Before doing any maintenance, be sure to turn off the power.
2. Open the duct access door.



STEP 3

3. Carefully pull one of the lamps to remove it from the metal clips holding it in place. Gently remove the connector from the end of the lamp and pull the lamp out of the conduit.

NOTE: If the connector is damaged, do not hesitate to replace it.



STEP 4

4. Take a new lamp – with your gloved hands, insert it into the conduit and plug the connector into it. If you have difficulty inserting the connector, turn it 90°.



STEP 5

5. Insert the lamp into the extrusion on the metal clamps and gently secure it in place. It is likely that you will have to tighten the clamps a little before putting the lamp in.



STEP 6

6. Do the same for the other 4 lamps.
7. When you are finished, close the access door and turn the power back on.



STEP 8

8. All that remains is to reset the hour counter to 17,000 hours.

Get In Touch

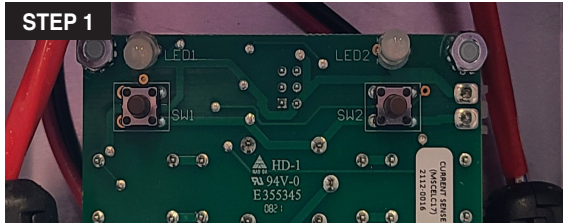
Call: 0845 6880112
 Email: info@adremit.co.uk

Our Address

Puravent, Adremit Limited, Unit 5a, Commercial Yard, Settle, North Yorkshire, BD24 9RH



Step by Step Lamp Timer Reset



1. Press and hold the Mode button until the LEDs flash RED, then turn GREEN.
2. The countdown of all lamps is reset to 17000 hrs.

How to Clean your Product

For optimum performance, lamps should be protected from dust and residue. Since the lamps are installed in the direction of the air flow, it is unlikely that they will accumulate dust. Nevertheless we suggest to check their fouling if possible after 6 months. Clean the lamps and their reflectors as needed with mild soap or isopropyl alcohol. Use a rag. Always test the cleaner to make sure it does not damage the surface.

⚠ CAUTION: Under no circumstance should water be sprayed or splashed onto the product.

STORAGE

The BIO-WALL™ does not require specific storage. It is a permanent unit that works continuously when powered.

⚠ CAUTION: Keep away from unsupervised children. This unit is not a toy.

ULTRAVIOLETS: UVC

The UVC (254 nm) wavelengths produced by Sanuvox UV units and systems are the same as the ultraviolets produced by the Sun. The UVC attacks the micro-organisms on a molecular level deactivating the contaminants. Unlike conventional UV lamps on the market, Sanuvox UV units and systems use a patented process designed to deliver the maximum UV dosage to the moving airstream or surface.

⚠ CAUTION: Never expose eyes or skin to an operating UV lamp.

ELECTRICAL RATINGS, POWER CONSUMPTION & AVAILABLE VOLTAGE

The BIO-WALL™ in its largest configuration has a power consumption of up to 775 W each.

The BIO-WALL™ necessary power requirements is 115-277 VAC, 50/60Hz.

The BIO-WALL™ requires a dedicated circuit breaker with a minimum rating of 10A.

The door switch must operate on 5 VDC.

See product label to confirm power consumption of your specific unit or system.

NOTE: IF YOU EXPERIENCE A PROBLEM, PLEASE CONTACT CUSTOMER SERVICE FIRST OR SEE YOUR WARRANTY. DO NOT RETURN THE PRODUCT TO THE ORIGINAL PLACE OF PURCHASE. DO NOT ATTEMPT TO OPEN THE PRODUCT OR TAMPER WITH ITS COMPONENTS WITHOUT CONTACTING CUSTOMER SERVICE FIRST. DOING SO MAY VOID YOUR WARRANTY AND CAUSE PERSONAL INJURY OR DAMAGE TO THE PRODUCT.

Get In Touch



Call: 0845 6880112



Email: info@adremit.co.uk

Our Address

Puravent, Adremit Limited, Unit 5a, Commercial Yard,
Settle, North Yorkshire, BD24 9RH



RANGE OF ENVIRONMENTAL CONSIDERATIONS

1) Indoor or outdoor use	Indoor*
2) Altitude	< 2,000m
3) Temperature	5 to 65°C (41 to 149°F)
4) Relative humidity	Non condensing 70%
5) Mains supply voltage fluctuations	10%
6) Overvoltage category	II
7) Wet location	IPX0
8) Pollution degree	2

* If installed outside, ballast box must absolutely be installed in a waterproof enclosure provided with sufficient air circulation to maintain the temperature in the permissible range.

TROUBLESHOOTING

If your product is not working properly, refer to the following.

What you will need

A Phillips No. 2 screwdriver, a non-magnetic 7/16" nutdriver and spare parts.

Access to LEDs

When the BIO-WALL™ is not used with the BMS hookup or BioSmart display (optional), your only way to determine if the lamps or fans are working is by looking at the LEDs inside the BIO-WALL™ ballast box.

When opening the cover, be sure to proceed with care since the PCB module has components that are powered by high voltage.

Problem	Possible Cause	Solution
All LEDs are ● RED.	- In MODE 3, the PLC works.	
	- The ventilation duct access door is open.	- Make sure to close the access door properly.
	- Both fans are stopped.	- The system must have at least one fan in operation for the lamps to work: replace the fans.
	- All lamps and ballasts are faulty.	- Replace the UV lamps. - Replace the ballasts.
One (1) of the LEDs is ● RED.	- The lamp or ballast associated with this LED is faulty.	- Replace the UV lamps. - Replace the ballasts.
The LEDs flash from ● RED to ● GREEN.	- The lamps have passed their 2 years of life.	- Replace the UV lamps.
The LEDs in the ballast box are off.	- The system is not powered or the power supply is faulty.	- Make sure the system is powered on. - Replace the power supply.

**Contact your contractor for all your needs in terms of replacement parts:
UV Lamps, Fan, Clamp Assembly, Ballasts, etc.**

Get In Touch

Call: 0845 6880112
Email: info@adremit.co.uk

Our Address

Puravent, Adremit Limited, Unit 5a, Commercial Yard,
Settle, North Yorkshire, BD24 9RH



WARRANTY

You should first read all instructions before attempting to use this product.
For this warranty to be valid, keep a copy of the proof of purchase.



UV lamp	2 years
Ballast	15 years
Electronic Components	1 year

- A. This limited warranty applies to repair or replacement of product found to be defective in material or workmanship. This warranty does not apply to damage resulting from abusive, unreasonable use or supplemental damage. Defects that are the result of normal wear and tear will not be considered manufacturing defects under this warranty.
SANUVOX IS NOT LIABLE FOR INCIDENTAL OR CONSEQUENTIAL DAMAGES OF ANY NATURE, ANY IMPLIED WARRANTY OF MERCHANTABILITY OR FITNESS FOR A PARTICULAR PURPOSE ON THIS PRODUCT IS LIMITED IN DURATION TO THE DURATION OF THIS WARRANTY.
Some jurisdictions **do not** allow the exclusion or limitation of incidental or consequential damages or limitation on how long an implied warranty last, so the above limitations or exclusions may not apply to you. This warranty gives specific legal rights, and you also may have other rights which vary from jurisdiction to jurisdiction. This warranty applies only to the original purchaser of this product from the original date of purchase.
- B. At its option, SANUVOX will repair or replace this product if it is found to be defective in material or workmanship.
- C. This warranty does not cover damage resulting from any unauthorized attempts to repair or from any use not in accordance with the instruction manual.
- D. This warranty does not cover the filters, pre-filters or other accessories (if included), except for material or workmanship defects.

Call us toll-free at 1-888-726-8869 or email: info@sanuvox.com
Please be sure to specify product name.

NOTE: IF YOU EXPERIENCE A PROBLEM, PLEASE CONTACT CUSTOMER SERVICE FIRST OR SEE YOUR WARRANTY. DO NOT RETURN THE PRODUCT TO THE ORIGINAL PLACE OF PURCHASE. DO NOT ATTEMPT TO OPEN THE PRODUCT OR TAMPER WITH ITS COMPONENTS WITHOUT CONTACTING CUSTOMER SERVICE FIRST. DOING SO MAY VOID YOUR WARRANTY AND CAUSE PERSONAL INJURY OR DAMAGE TO THE PRODUCT.

CUSTOMER SERVICE

TO ORDER REPLACEMENT PARTS

PLEASE CONTACT YOUR CONTRACTOR OR SANUVOX CUSTOMER SERVICE
Toll-Free Phone #: 1-888-726-8869
Email: info@sanuvox.com
Website: www.sanuvox.com
Please be sure to specify product name.

Replacement parts for this product

BST120/277SHS	Ballast with input of 115-277 VAC, 50/60Hz
LMPHGS180	18" T6 High Intensity Germicidal Lamp for BIOM18G
LMPHGS240	24" T6 High Intensity Germicidal Lamp for BIOM24G
LMPHGS300	30" T6 High Intensity Germicidal Lamp for BIOM30G
LMPHGS400	40" T6 High Intensity Germicidal Lamp for BIOM40G
LMPHGS500	50" T6 High Intensity Germicidal Lamp for BIOM50G
LMPHGS600	60" T6 High Intensity Germicidal Lamp for BIOM60G
FLGFIXTUB	Mounting flanges (2)
CON-TUB-19	Clamp assembly (2)
FSTCLP5	Stainless steel spring clamp
TUBAA66	3/4" support rod
BIOSCREEN	BioSmart touch screen for BIO-WALL™
CON-LMP-41	Gaynor Plug

⚠ WARNING: Use only specified SANUVOX branded replacement UV lamps with your unit or system. Use of any other lamps will void your warranty and can result in damage to the unit, system and/or lamp(s).

Get In Touch

Call: 0845 6880112
 Email: info@adremit.co.uk

Our Address

Puravent, Adremit Limited, Unit 5a, Commercial Yard,
Settle, North Yorkshire, BD24 9RH