



The radiant tube that fires up!

Mark INFRRA / INFRRA MONO black tube radiant heaters heat with long-wave infrared radiation. Radiant heating is based on the principle of heat transfer from a warm body to a body of lower temperature by means of electromagnetic wave energy. This electromagnetic wave, not hindered by air, radiates walls, floor and the present persons in the room.

As soon as the infrared radiation gets in contact with the human body, it is converted into heat. This does not cause any change in the air temperature. This method of heat generation is considered as very pleasant.

The more intense the radiant heat is, the less, the actual air temperature has to be increased for a comfortable indoor climate. Therefore, heating with the Mark INFRRA system is much more economical compared to conventional systems.

Possible applications include: sports halls, production facilities, aircraft hangars, showrooms and garages



The benefits of radiant heating include

- No spreading of dust and low noise level during operation
- Can be used in a focused way to enable a high energy efficiency
- A radiation efficiency of up to 75% according to EN 416-2
- A uniform heat distribution across the entire length of the radiator is achieved by the use of an overpressure burner with a long stable flame, in combination with built-in turbulators in the radiant tube
- Available in 6 different capacities from 10 to 50 kW
- By using a 1-stage, 2-stage or modulating control the output of the radiant heater is adapted to the demanded heat
- Various sizes, from 3 to 18 m length

- Highly reflective aluminium reflector hood, optional double air insulated (type +)
- The radiator with a double air-insulated aluminium reflector can be optimized energetically by using a flue gas cooler (type ++)
- The highly reflective radiation hood features integrated V-shaped reflectors and end caps
- Available in natural gas and propane
- Easy installation and maintenance

mark®

Get In Touch

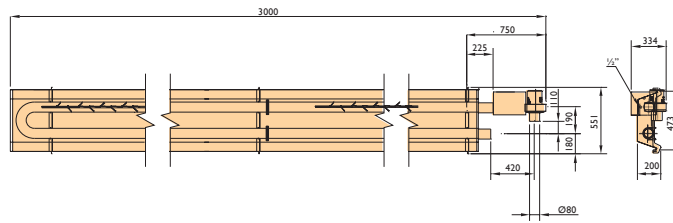
 Call: 0845 6880112
 Email: info@adremit.co.uk

Our Address

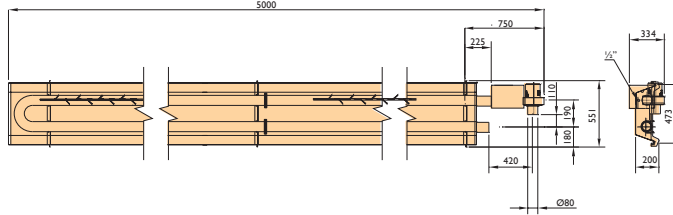
Puravent, Adremit Limited, Unit 5a, Commercial Yard,
Settle, North Yorkshire, BD24 9RH

Dimensions single-walled reflector

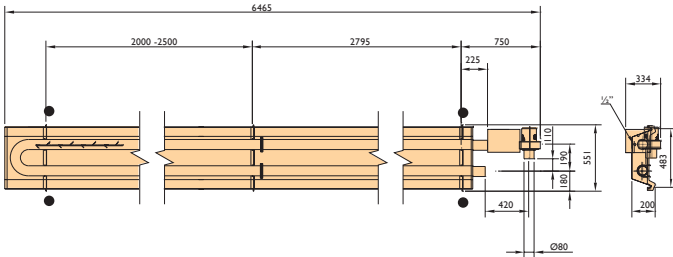
INFRA 10-3



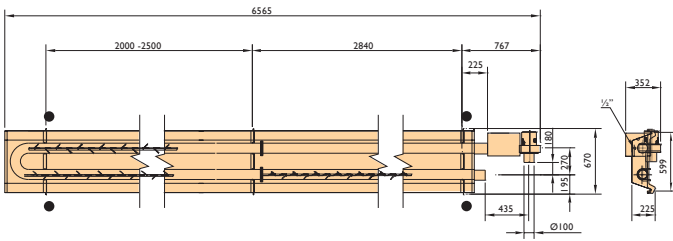
INFRA 15-5



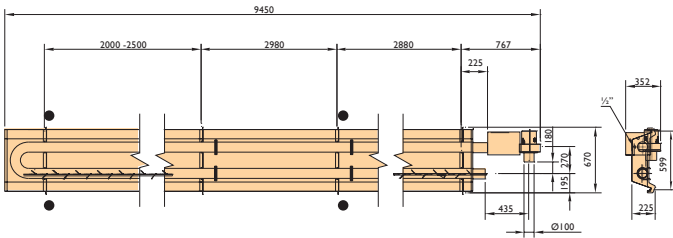
INFRA 20-6



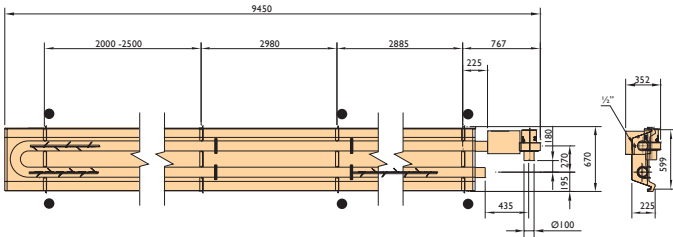
INFRA 30-6



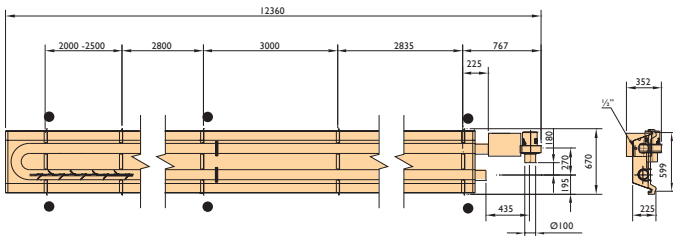
INFRA 30-9



INFRA 40-9



INFRA 50-12



Get In Touch

Call: [0845 6880112](tel:08456880112)
 Email: info@adremit.co.uk

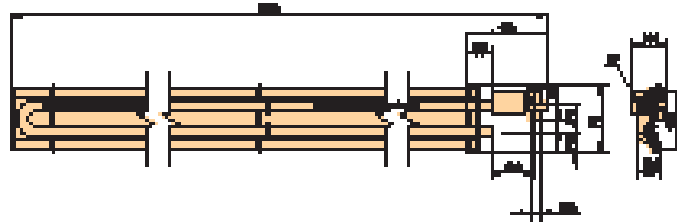
Our Address

Puravent, Adremit Limited, Unit 5a, Commercial Yard,
 Settle, North Yorkshire, BD24 9RH

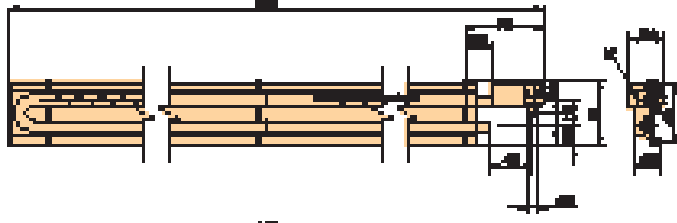


Dimensions double-walled reflector

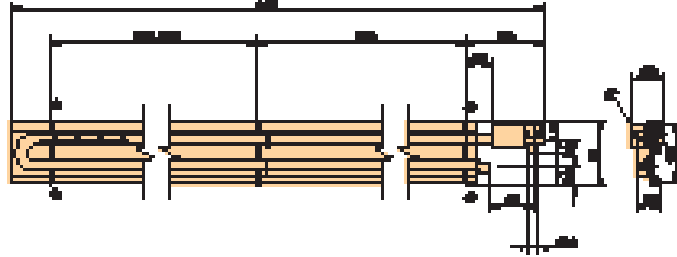
INFRA 10-3 +/++



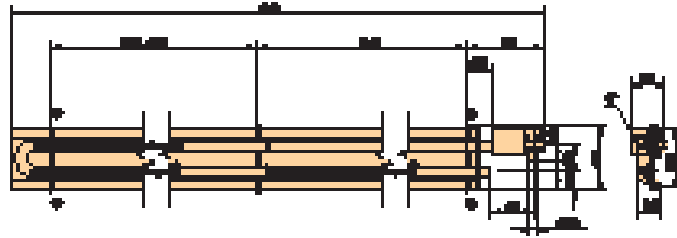
INFRA 15-5 +/++



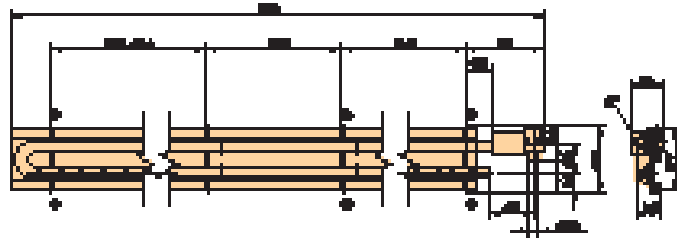
INFRA 20-6 +/++



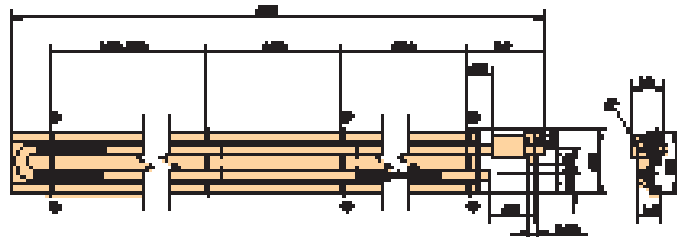
INFRA 30-6 +/++



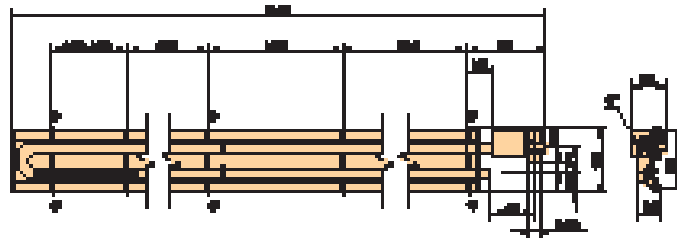
INFRA 30-9 +/++



INFRA 40-9 +/++



INFRA 50-12 +/++



Gas-fired radiant heaters - 80

Get In Touch

Call: [0845 6880112](tel:08456880112)
Email: info@adremit.co.uk

Our Address

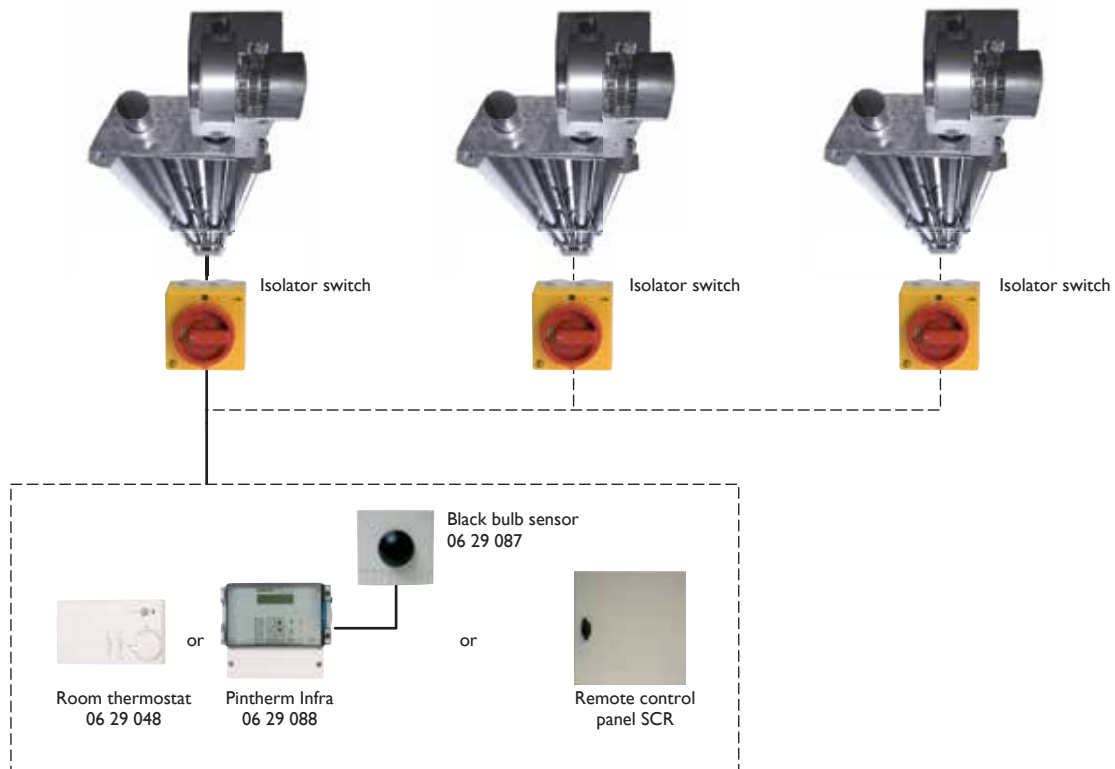
Puravent, Adremit Limited, Unit 5a, Commercial Yard,
Settle, North Yorkshire, BD24 9RH

Technical information

Type		10-3	15-5	20-6	30-6	30-9	40-9	50-12
Nominal power	kW	9,1	12,7	16,3	24,6	27,5	34,4	45,1
Nominal load (lower value)	kW	10,0	14,0	18,0	27,0	30,0	38,0	49,9
Gas consumption G25 (15°C)	m³/h	1,20	1,70	2,20	3,20	3,60	4,60	5,90
Gas consumption G20 (15°C)	m³/h	1,10	1,50	1,90	2,90	3,20	3,90	5,30
Gas consumption G31 (15°C)	kg/h	0,79	1,11	1,42	2,12	2,36	2,99	3,92
Gas consumption G30 (15°C)	kg/h	0,81	1,14	1,46	2,19	2,43	3,08	4,04
Weight of the Infra	kg	53	67	66 / 87*	89 / 109*	123 / 153*	123 / 153*	148 / 188*
Electrical power	W	70	70	70	80	80	80	80
Recommended suspension height, horizontal	m	4	4	4	5	5	5	7
Recommended suspension height, 30° angle	m	4	4	4	4	4	5	6
Burner pressure G25	mbar	16,0	16,0	16,0	16,0	16,0	16,0	16,0
Burner pressure G20	mbar	11,0	11,5	11,0	11,5	11,5	11,5	12,0
Burner pressure G31	mbar	35,6	35,6	35,6	35,6	35,6	35,6	35,6
Burner pressure G30	mbar	27,7	27,7	27,7	27,7	27,7	27,7	27,7

* Single-/ Double-walled reflector

Controls



Get In Touch

Call: [0845 6880112](tel:08456880112)
 Email: info@adremit.co.uk

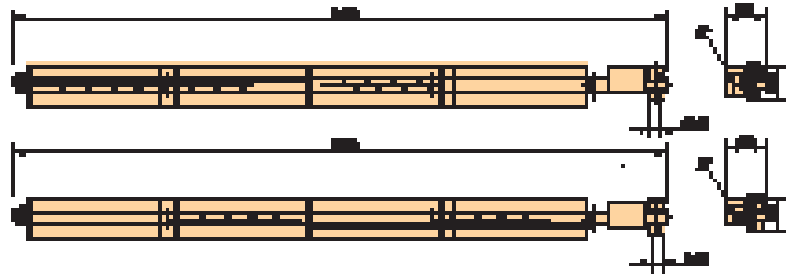
Our Address

Puravent, Adremit Limited, Unit 5a, Commercial Yard,
 Settle, North Yorkshire, BD24 9RH

Dimensions Infra Mono

INFRA MONO 30-12

INFRA MONO 50-18



Technical information

Type		30-12 Mono	50-18 Mono
Nominal power	kW	27,5	45,1
Nominal load (lower value)	kW	30,0	49,9
Gas consumption G25 (15°C)	m³/h	3,60	5,90
Gas consumption G20 (15°C)	m³/h	3,20	5,10
Gas consumption G31 (15°C)	kg/h	2,36	3,92
Gas consumption G30 (15°C)	kg/h	2,43	4,04
Weight of the Infra	kg	86	118
Electrical power	W	80	80
Recommended suspension height, horizontal	m	5	7
Recommended suspension height, 30° angle	m	5	6
Burner pressure G25	mbar	16,0	16,0
Burner pressure G20	mbar	11,5	11,5
Burner pressure G31	mbar	35,6	35,6
Burner pressure G30	mbar	27,7	27,7

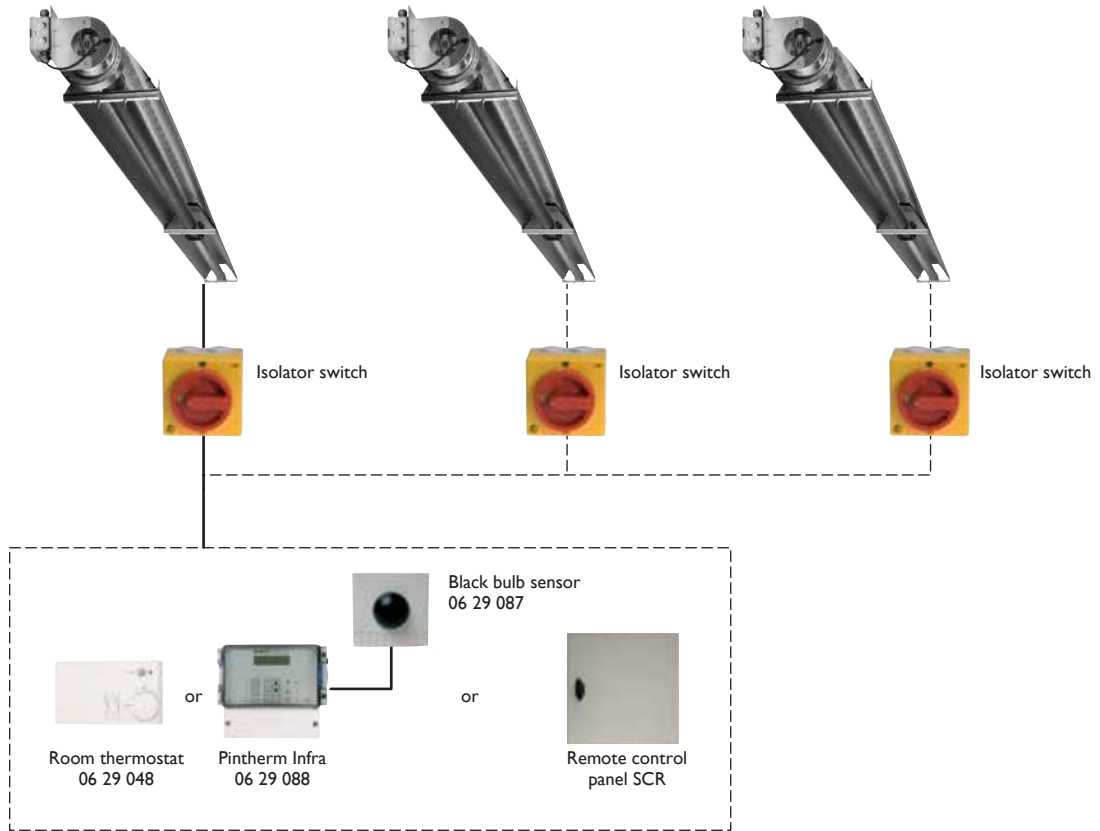
Get In Touch

 Call: [0845 6880112](tel:08456880112)
 Email: info@adremit.co.uk



Our Address

Puravent, Adremit Limited, Unit 5a, Commercial Yard, Settle, North Yorkshire, BD24 9RH

Controls



Get In Touch



 Call: [0845 6880112](tel:08456880112)
 Email: info@adremit.co.uk

Our Address

Puravent, Adremit Limited, Unit 5a, Commercial Yard,
Settle, North Yorkshire, BD24 9RH



Get In Touch

 **Call:** [0845 6880112](tel:08456880112)
 **Email:** info@adremit.co.uk

Our Address

Puravent, Adremit Limited, Unit 5a, Commercial Yard,
Settle, North Yorkshire, BD24 9RH