

TRION[®]

Air Purification Systems



Air Boss[®] T-Series

Electronic Air Cleaners

Engineered Solutions For Clean Air

The Trion® T-Series is ideal for the removal of smoke, fumes, and oil/coolant smoke and mist. The T-Series has the ability to clean contaminated indoor air and recirculate it back to the work area, reducing energy costs by not having to exhaust conditioned air to the outside. Models T1300, T2600 and T5200 can be installed either unducted or ducted for source capture. Models T1001 and T2002 are designed for ducted applications.

Features

- Ceramic Insulators (stand off)
- Solid State Power Supply
- Spiked Ionising Blades
- Extra Depth Collector Cells
- Totally Enclosed Fan Cooled Motor (Blower Units)
- Electrical Component Box Mounted out of Air Stream
- Modular Approach for Greater Flexibility

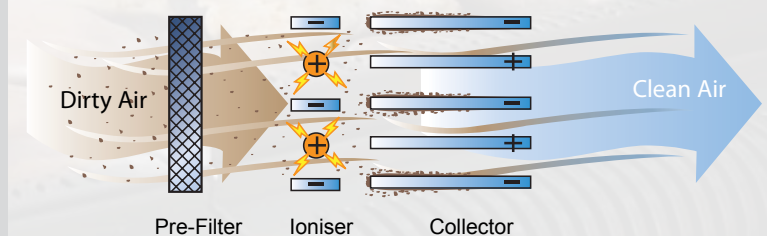
Benefits

- Ceramic Insulators — Out of Airstream for Increased Reliability
- Extra Depth Collector Cell with Greater Dirt Holding/Collection Capacity
- Spiked Ioniser — No Ionising Wires to Replace, Reducing Maintenance: No Consumable Parts
- High Efficiency — up to 95% on Single Pass and 99% on Double Pass Option (DOP Test Method)
- Permanent Ioniser/Collector Elements — No Consumable Filter Cost; Just Wash, Dry and Reinstall
- Low Pressure Drop (90 Pa — Lower Energy Cost to Operate Compared to Media and Cartridge Units)
- Hinged Door Filter Access — Quick & Easy access — No Tools Required



How it Works

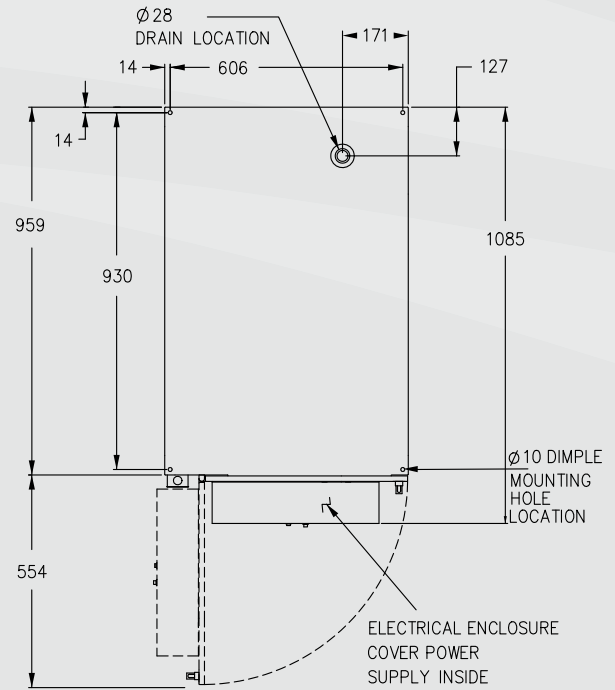
The Trion® T-Series utilizes the principle of Electrostatic Precipitation. Air is drawn by the motor/blower through a washable metal mesh pre-filter which traps large dust particles. The remaining particles, some as small as 0.01 microns, pass into a strong electrical field (ionising section) where the particulate receives an electrical charge. The charged particles then pass into a collector plate section made up of a series of equally spaced parallel plates. Each alternate plate is charged with the same polarity as the particles, which repel, while the interleaving plates are grounded, which attract and collect.



Air Boss® T4002 Specifications



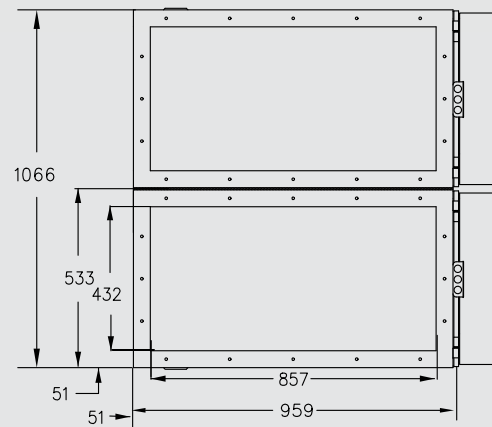
Top View



T4002

Dimensions	635L x 1085W x 1073H mm
Installation	Free Standing, Wall or Frame Mounted
Unit Weight	160 kg
Input Voltage	230Vac/1phase/50 Hz
Cell Power	100 watts
Output Voltage	12 kV/6 kV
No of cells	4
Cell Weight	15 kg
Air Volume	4420 - 8840 m ³ /hr
Controls	On/Off Switch with Indicator
Pre-filter	Aluminum Standard Mesh (Optional Impinger)
Primary Filter	Electronic Ioniser/Collector Cell
After Filter	Optional Disposable Charcoal After Filter
Power Supply	High Frequency Solid State Design
Efficiency	To 95% Based on D.O.P. Test Method To 99% for Double Pass (Calculated)
General	Multiple Units Can Be Joined Together for Increased Volume or Efficiency

Discharge End



Front View & Intake End

