

L. SERVICE WARRANTY

Do not operate the unit with a damaged cord or plug, after the unit malfunctions, has been dropped or damaged.

For your convenience, record the complete model number and product name (located on the Product Identification Plate), the date you purchased the product, and attach your purchase receipt as proof of purchase.

To ensure your product is covered by warranty, the complete faulty product together with your purchase receipt should be returned to your retailer.

ONE (1) YEAR LIMITED WARRANTY Save This Warranty Information

EHS (International) Ltd. Guarantees this product free from defects in materials and workmanship for a period of one (1) year.

Should this unit be operated under conditions other than those recommended, at voltages other than the voltage indicated on the unit, or any attempts made to service or modify the unit, will render this **WARRANTY VOID**. The product you buy may sometimes differ slightly from illustration. This warranty is in addition to, and does not affect, your statutory rights.

Should you have a problem with this product, please call our Help Desk on: (0870) 742 5021.

This product has been manufactured to comply with EEC Directives 73/23/EEC and 89/336/EEC

Waste electrical products should not be disposed of with household waste. Please recycle where facilities exist. Check with your Local Authority or retailer for recycling advice.



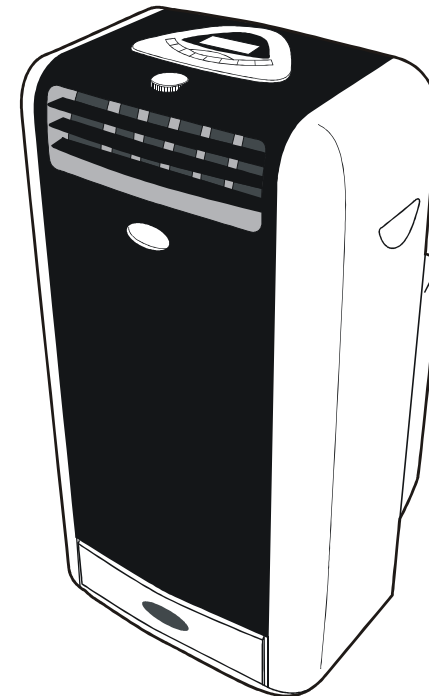
EHS, Manchester, M17 1RN

EHS 01/07



12000BTU Mobile Air Conditioner Model PTP35D

Cools / Heats / Dehumidifies
Twin Pipes / Remote Control



**Please read and retain these
instructions for future reference**

A. SPECIFICATION

| | |
|--|--|
| Model no. | PTP35D |
| Cooling capacity | 12000 BTU / 3500W |
| Heating capacity (PTC heater) | 1200W |
| Power/Ampere consumption for cooling* | 1450W / 6.3A |
| Power/Ampere consumption for heating | 1200W / 5.3A |
| Air volume (max. speed) | 300m ³ /h |
| Humidity removal capacity | 28 L/day |
| Recommended room size | Under 34m ² |
| Power supply | 220~240V~ 50Hz |
| Compressor | Rotary |
| Refrigerant | R407C |
| Refrigerant load* | 550g |
| Fan speed | 3 |
| Timer | 1~ 24 hours |
| Working temperature | Cooling: 18 - 32°C Heating: -5 – 27°C |
| Exhaust pipe | 130 x1800mm |
| Net Weight | 38kgs |
| Dimension (WxDxH) | 45 x 46.5 x 82 cm |

Please note: The data marked with '*' may vary for technical reasons: for greater precision, please refer to the rating label placed at the back of the unit. Measuring condition for above is: Cooling – DB 27°C , WB 19°C

B. IMPORTANT SAFETY INSTRUCTIONS

1. Transport & store the unit in an upright position only. Leave it in an upright position for at least 3 hours before first use.
2. Always place the unit on an even, level surface.
3. An opening in a window or wall is required to accommodate the exhaust hose to expel the hot air.
4. Ensure the unit is connected to an earthed power supply of the correct rating. (Refer to the rating label located at the back of the unit).
5. The unit will cool when the room temperature is between 18°C~32°C depending on the thermostat setting.
6. DO NOT use this unit for functions other than those described in this instruction manual.
7. DO NOT tilt the unit.
8. DO NOT cover or obstruct the appliance's inlet and outlet grilles.

9. Your air conditioner has been designed to be used only in the home, office and similar conditions and should not be used for any other purpose.
10. This unit is for indoor use only.
11. Never unplug the air conditioner while it is working, this could damage the electronic circuits.
12. DO NOT use the appliance in a wet room, such as a bathroom or laundry room to avoid the risk of electrical shocks.
13. DO NOT bend or crush the warm air exhaust hose.
14. DO NOT sit or place articles on the appliance.
15. DO NOT use the appliance with wet or damp hands.
16. DO NOT let chemical substances come into contact with the appliance.
17. DO NOT use the appliance in the presence of flammable substances or vapours such as alcohol, insecticides, petrol, etc.
18. DO NOT use the plug to start and stop the appliance. ALWAYS use the intended control panel to start and stop the unit.
19. ALWAYS turn off the appliance when it is not in use and remove the mains plug from the socket outlet.
20. ALWAYS turn the unit off and remove the mains plug before cleaning, carrying out maintenance or moving location.
21. Avoid the use of adapter plugs, multiple sockets and /or extension leads. If their use is necessary, ensure they conform to current safety standards.
22. Do not pull the electrical cable or place it near a source of heat: always unroll it completely to avoid dangerous overheating. If the power cord becomes damaged, the service agent or a similarly qualified person must replace it, in order to avoid a hazard.
23. The filter must be used with the product at all times, when removing it for clearing always turn the unit off and unplug the mains plug from the socket.
24. Do not operate the unit with a damaged power cord or plug, after it malfunctions, has been dropped or damaged. If the power cord is damaged it must be replaced by the manufacturer or a qualified service engineer to avoid a hazard.
25. Closely supervise any children and pets when unit is in use
26. Only use in the upright position on a flat level surface, at least 50cm from any objects.

Energy Saving Tips

- Blocking of the filter reduces the efficiency of the air and increases its power consumption by up to 6%.
- Avoid opening doors frequently.
- Each person present in a room provides between 100 Watts and 150 Watts of heat. Consequently, the more people there are in a room, the less effective the unit will be in cooling.
- To ensure the optimal efficiency of the unit, we advise you to keep doors and windows closed, and to take into account the surface of the walls and windows exposed to the sun.

C. BS PLUG WIRING INSTRUCTIONS

Wiring Instructions: Should it be necessary to change the plug please note the wires in the mains lead are coloured in accordance with the following code :

BLUE - NEUTRAL
BROWN - LIVE
GREEN AND YELLOW - EARTH

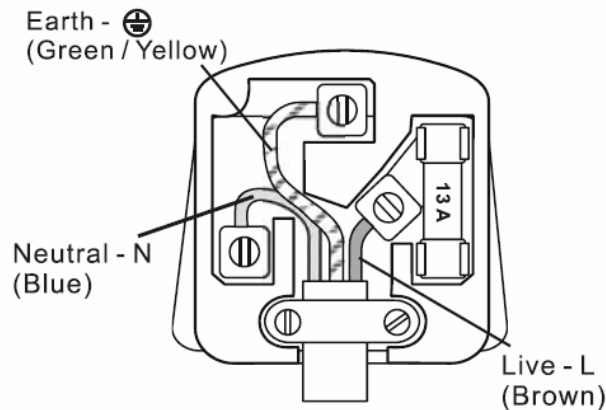
As the colours of the wires in the mains lead of this appliance may not correspond with the coloured markings identifying the terminals in your plug, proceed as follows:

1. The **BLUE** wire is the **NEUTRAL** and must be connected to the terminal which is marked with the letter **N** or coloured **BLACK**.
2. The **BROWN** wire is the **LIVE** and must be connected to the terminal which is marked with the letter **L** or coloured **RED**.
3. The **GREEN/YELLOW** is the **EARTH** and must be connected to the terminal which is marked with the letter **E** or \oplus or coloured **GREEN OR GREEN/YELLOW**.
4. Always ensure that the cord grip is positioned and fastened correctly.

If a **13A (BS 1363)** fused plug is used it must be fitted with a **13A (BS 1362)** fuse. If in doubt consult a qualified electrician.

Wiring for a 13 Amp Plug (BS 1363)

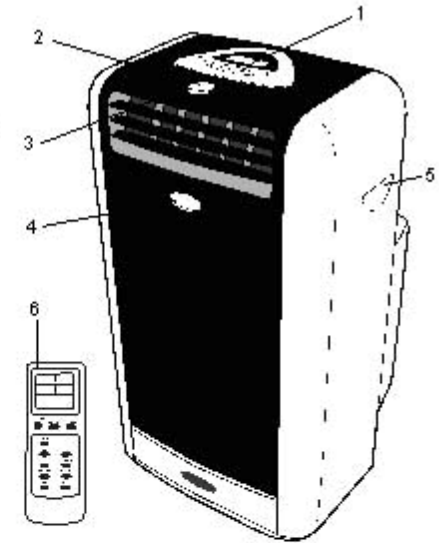
Please note. The Earth Terminal is marked with the letter **E** or Earth Symbol \oplus



D. PARTS

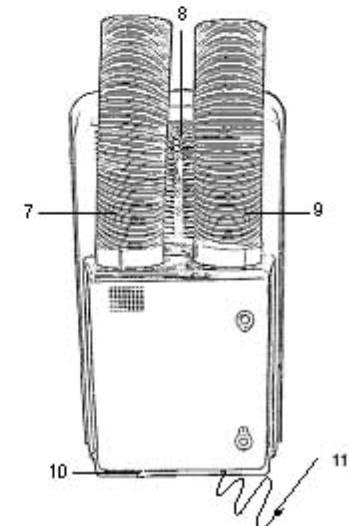
Front View

1. Control Panel with VFD Display
2. Adjustable Dial: Thermostat and Timer
3. Adjustable Vertical/Horizontal Louvers
4. LED Display
5. Handle
6. Remote Control

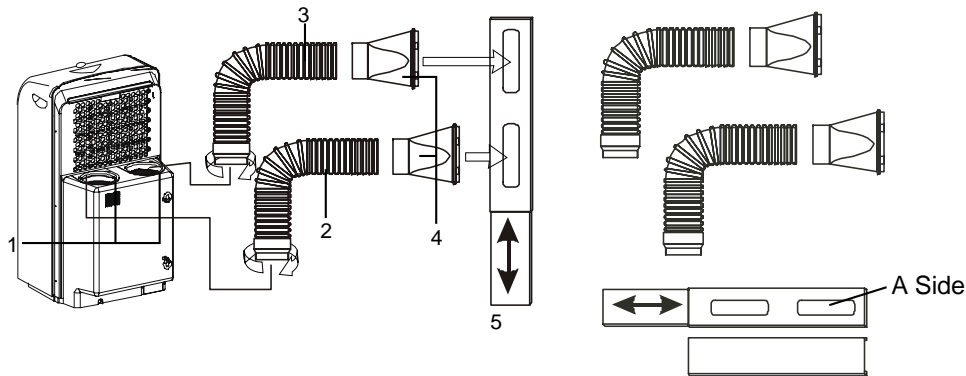


Rear View

7. Air Outlet Hose
8. Evaporator Air Intake
9. Air Intake Hose
10. Water Drain
11. Power Cord



E. INSTALLATION



1. Exhaust Ports

2. Air Outlet Hose

3. Air Intake Hose

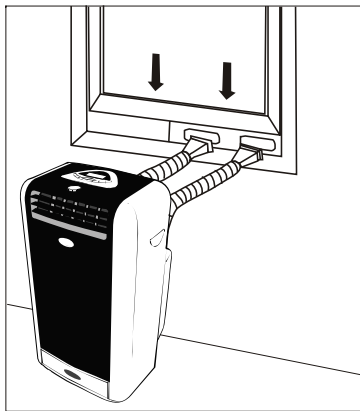
4. Window Exhaust Adapter (2)

5. Adjustable Window Panel

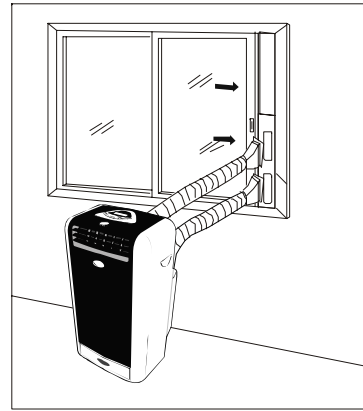
Air Inlet and Air Outlet Hose: Extends from 45cm up to 180cm Window Kit:

Extends from 72cm up to 140cm.

NOTE: Air outlet hose should be mounted at A side

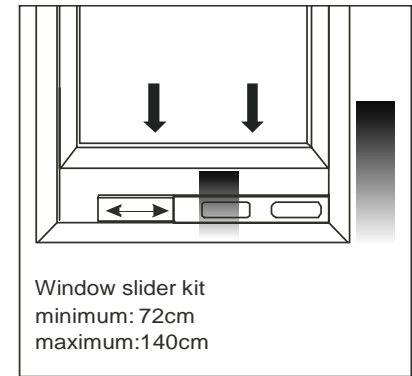
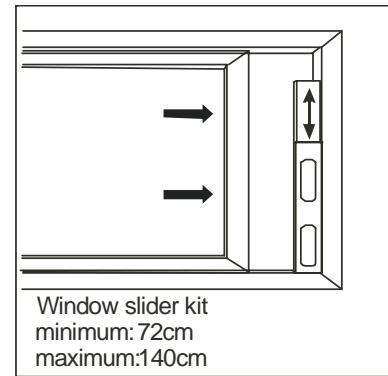


Horizontal



Vertical

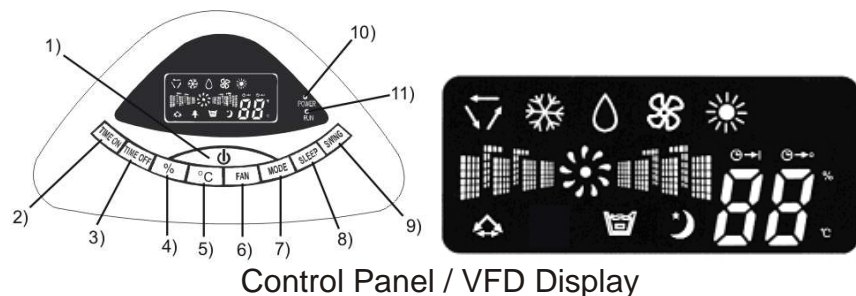
NOTE: Your window kit has been designed to fit most standard vertical and horizontal window applications. However, it may be necessary for you to improvise/modify some aspects of the installation procedures for certain types of windows. Please refer to measurements:



- 1) Select a suitable location, making sure you have easy access to an electrical socket.
- 2) Remove the 2 hoses, 2 window exhaust adapters, 1 window panel kit.
- 3) To install the flexible exhaust hoses, insert the end of the hose with the round connector into either the air inlet or air outlet hole on the back of the unit. Turn the hose clockwise to secure the hose into the hole. Connect both hoses.
- 4) Screw the window exhaust adapters on both hoses by turning them clockwise.
- 5) Insert the air inlet window exhaust adapter into the left hole of the window panel kit. Then insert the air outlet window exhaust adapter in the right hole of the window panel kit.
NOTE: 1. Step 3 is required only when using cooling or dehumidification modes. In cooling mode the two hoses or the air outlet hose can be installed for the unit to operate. Only use the air outlet hose only when the unit is in dehumidification mode 2. While operating or installing, the hoses should not be blocked by curtains or any other obstructions.
- 6) The air conditioner can now be plugged into a 220-240V~ 50Hz socket. You are advised not to use an extension cord.

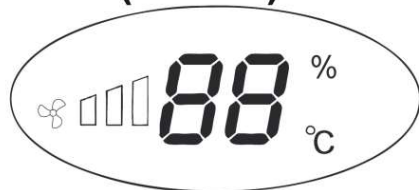
NOTE: The compressor is an essential component of the appliance for producing cold air. This appliance is fitted with a thermal protection device which allows the compressor to be started only after a time delay of up to three minutes. This protects the compressor from overheating or freezing.

F. OPERATING INSTRUCTIONS

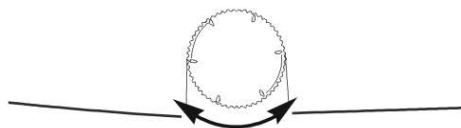


Control Panel / VFD Display

LED DISPLAY (Front)



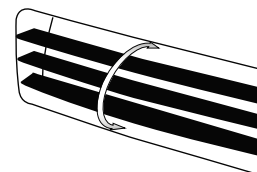
ADJUSTABLE DIAL: THERMOSTAT & TIMER



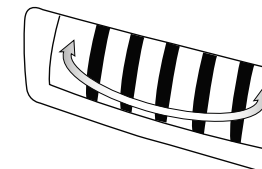
- 1) **Power On/Off** - Starts or Stops the Unit
- 2) **Time On Button** - To program the timer, press Timer On button until the LED display shows a flashing . Turning adjustable dial switch to change the clock to the desired time for the unit being turned on.
- 3) **Time Off Button** - Press Timer Off button and the LED display will show a flashing . Turning adjustable dial switch to change the clock to the desired time for the unit being turned off. The light will flash for 3 seconds to activate the timer you programmed.
- 4) **%** - To display Humidity
- 5) **°C** - To display current temperature.
NOTE: The display temperature may differ from actual temperature at (± 2 °C)
- 6) **Fan Speed Button** - Select the fan speed desire: High, Medium and Low. The fan speeds are identified distinguished by the speed of the digital air segments progressing out from the windmill fan image on the VFD display, as it gets faster.
- 7) **Mode Button** - Select the functions of the unit for: Fan Mode , Cooling Mode , Heating Mode , Dehumidifying Mode and Auto Mode
- 8) **Sleep Button** - Press to select the function of the unit for Sleep Mode.

- 9) **Swing Button** - To start swinging air louvers horizontally by press SWING Button once. At the moment, '' appears on VFD. To stop, press SWING again. Vertical air flow direction can be adjusted manually.

Manual Horizontal
Louvers



Automatic Oscillating
Louvers



- 10) **Power Indicator Light** - Indicates the unit is on.
- 11) **Run Indicator Light** - Indicates the unit is in working mode

Cooling Operation

- a) Install the exhaust ducts properly.
- b) Plug the Power Cord to the power outlet.
- c) Turn on the unit by pressing the '' Button on the control panel.
- d) Press Mode Button until '' appears on the VFD display
- e) Turn the adjustable dial switch until the desired room temperature appears on the LED. The desired temperature range is from 16°C-31°C.
- f) Select the fan speed by pressing the Fan Button.

NOTE: During hot days, the unit will cool off the room most efficiently by setting the temperature at the lowest and the fan speed at the highest. Reducing the length of the exhaust duct and insulating the exhaust duct and keeping direct sunlight to a minimum will also improve the cooling efficiency.

Dehumidifying Operation

- a) Install the exhaust ducts properly.
 - b) Plug the Power Cord to the power outlet.
 - c) Turn on the unit by pressing the '' Button on the control panel.
 - d) Press the Mode Button until the '' appears on the VFD display.
- NOTE:** The unit operates at low fan speed during dehumidifying. The unit cools room slightly during the dehumidification. Keep the windows and the doors closed to aid the effectiveness of the unit in removing the moisture from the room. The unit will not perform dehumidification when the room temperature is lower than 16°C.

Fan Operation

- a) Plug the Power Cord to the power outlet.
- b) Turn on the unit by pressing the '⏻' Button on the control panel.
- c) Press the Mode Button until '☼' appears on the VFD display.
- d) Select the fan speed by pressing the Fan Button.

NOTE: When the unit is running on fan mode, the exhaust duct is inoperative and is not required.

Heating Operation

- a) Plug the Power Cord to the power outlet.
- b) Turn on the unit by pressing the '⏻' Button on the control panel.
- c) Press the Mode Button until '☀' appears on the VFD display.
- d) Turning adjustable dial switch until the desired room temperature appears on the LED. The desired temperature range is from 16°C-31°C.
- e) Select the fan speed by pressing the Fan button. It is recommended to use the low fan

NOTE: When the unit is running on heating mode, the exhaust duct is inoperative and is not required.

Auto Operation

- a) Install the exhaust ducts properly
- b) Plug the Power Cord to the power outlet.
- c) Turn on the unit by pressing the '⏻' Button on the control panel.
- d) Press the Mode Button until the '🌙' appears on the VFD display.
- e) Select the fan speed by using FAN button.

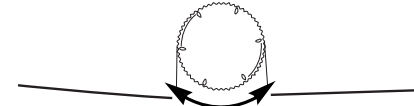
During AUTO mode, the unit operates at heating mode when the room temperature is below 20°C. It operates at dehumidifying mode when the room temperature is between 20°C to 26.6°C. It operates at cooling mode when the room temperature is above 26.6°C. You may use the timer with the AUTO mode.

Sleep Mode

- a) The air conditioner is in operation.
- b) Press SLEEP Button, the '🌙' appears on the VFD.
- c) The fan motor will run on low speed.
- d) When in cooling mode, within the first two hours, the temperature will be increased degree per hour. Then temperature will remain 2 degrees higher than the originally set degrees for 6 hours. 6 hours later, the temperature will return to the original set degrees.
- e) When in heating mode, within the first 2 hours, temperature will decrease one degree per hour. Then temperature will remain 2 degrees lower than the original degrees for 6 hours. 6 hours later, temperature will return to original degree you set.
- f) When in dehumidify mode, the temperature will not change.

NOTE: When the room temperature is low and the indoor humidity is high, the condensate of the air conditioner may not be discharged in time. Water will accumulate in the unit that leads to the unit to stop working automatically for a long time. (At the moment, the '🗑' appears on the VFD display.) In order to let your unit recover working quickly, you can pull out the "Drain Port" which is located in the lower left bottom of the back of the unit. The condensate will be discharged several minutes after water is drained. Please use at least a 1.5 litre container to catch the dripping water. It is not advised to use continuous drain method when the room temperature is higher than 31°C.

OPERATION USING ADJUSTABLE DIAL SWITCH

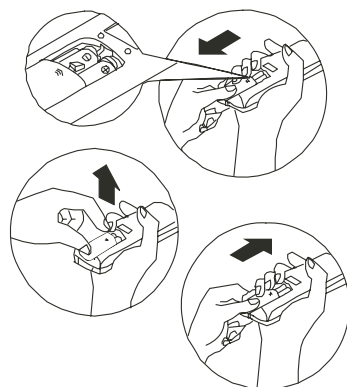


To adjust desired temperature and program timer. Select the desired temperature by turning Adjustable Dial Switch when using the unit in cooling or heating function. The desired temperature range is from 16°C- 31°C. The LED flashes to display the desired temperature during the setting, it displays the room temperature after 5 seconds.

Press Timer On/Off button, turn adjustable dial switch to change the clock to the desired time for the unit being turned on or off.

G. REMOTE CONTROL OPERATION

1. Remove the cover from the back of the remote control.
2. Insert two AAA dry-cell batteries (batteries included).
3. Insert the power plug into an outlet.
4. Always point the remote control signal transmitter toward the unit when operating.
5. Make sure that the signal path is not obstructed.
6. The maximum distance at which signals can be received is 8M.
7. Remove the batteries if the unit is not going to be used for an extended period of time.

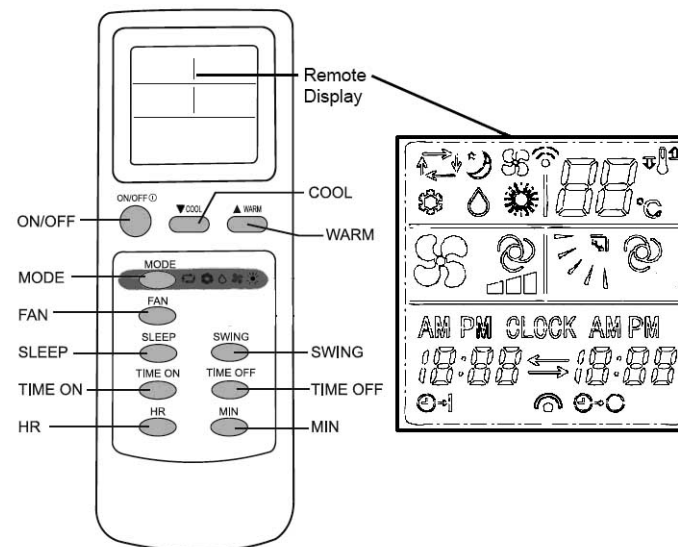


A CHANGE IN THE FUNCTION IS USUALLY INDICATED BY A BEEP.

NOTE:

1. Do not abuse the remote control.
2. Do not place the remote control in a location that is exposed to direct sunlight or next to a heating unit or other heat source.
3. Do not use rechargeable batteries because they differ from standard dry cell batteries in shape, dimension and performance.
4. Be sure to replace the batteries with two new batteries of the same type.

IMPORTANT: At the end of their life dispose of the batteries according to Local Authority regulations. **Do not dispose of batteries with your normal household rubbish.**



REMOTE CONTROL FUNCTIONS

1. **ON/OFF** - Starts or Stops the Unit
2. **WARMER** - Adjust to desired warm temperature.
3. **COOLER** - Adjust to desired cool temperature.
4. **MODE** - Select the functions of the unit for: Fan Mode, Air Conditioning Mode, Heating Mode, Dehumidifying Mode and Auto Mode
5. **FAN** - Select the fan speed desire: High, Medium and Low
The fan speed can be visually distinguished by the speed of the digital air segments progressing out from the wind mill fan image on the VFD display.
6. **SWING** - To start swinging air louvers horizontally by press SWING Button once. At the moment, appears on VFD. To stop, press SWING again. Vertical air flow direction can be adjusted manually.
7. **TIME ON** - To program the timer, press Timer On button until the VFD display shows a flashing .
8. **TIME OFF** - Press Timer Off button and the VFD display will show a flashing .
9. **HR** - Press to set the desired hour setting.
10. **MIN.** - Press to set the desired minute setting.


NOTE: ALL SETTINGS CAN BE VIEWED ON THE REMOTE DISPLAY

H. DRAINAGE

This unit is self evaporating and the condensate will vent out of the exhaust hose. However, during the coiling process any excess will collect in the reservoir inside the unit.

If the reservoir is full the compressor and motor will stop operating and the unit will make a beeping noise and the water full. Pressing any button on the control panel will stop this sound.


To enable the cooling system to start operating again, the water inside the unit required draining in one of the following ways:

1. Turn off the air conditioner and unplug from the power socket. While the reservoir is full, avoid moving the unit.
2. Position the water tray underneath the drain hole.
3. Remove the drain cap and rubber plug from the drain hole and allow the water to drain out.
4. Once drained replace the rubber plug and firmly tighten the drain cap.
5. Switch on the unit - the  light should not be ON.

If you wish to operate the unit without the need to empty, you can fit the optional drain hose.

1. Remove the drain cap and rubber plug, and retain for future use. Connect the drain tube supplied as shown and locate the other end into a drain.
2. The drain tube may be extended by adding an extension tube and using a suitable connector, (not supplied by the manufacturer) Approx 18mm outer diameter.

Please note

- The drain must be at or below the outlet level.
- When  is ON - 'full water' indicator will not function in this mode of drainage.

I. MAINTENACE

Always switch off and unplug the air conditioner from the mains before cleaning. To maximize the efficiency of the air conditioner clean regularly.

Cleaning the housing

Use a soft, damp cloth to wipe the body clean. Never use aggressive chemicals, petrol, detergents, chemically treated cloths, or other cleansing solutions. These could all damage the unit casing.

Cleaning the filter


Use a vacuum cleaner or tap the filter lightly to remove loose dust and dirt from the filters and then rinse thoroughly under running water (no hotter than 40°C). Dry thoroughly before replacing. Never operate the unit without the filters.

End of season storage

- Drain any water in the unit before completely operating the unit on ventilation only mode for a few hours, to thoroughly dry the inside.
- Clean or change the filter.
- Unplug and store the power cord as shown.
- Replace in the original carton or cover for storage.

J. TROUBLE SHOOTING

The air conditioner does not run

- Is the air conditioner plugged in?
- Is there a power failure?
- Is the  indicator is on?
- Is the room temperature below the set temperature?

The machine seems to have little cooling effect

- Is there direct sunshine? (Please close the curtains or blinds.)
- Are too many windows or doors open?
- Are there too many people in the room?
- Is there something in the room producing lots of heat?

The machine is not cooling

- Is the filter dusty, contaminated?
- Is the air intake or output blocked up?
- Is the room temperature below your selected temperature?

Too noisy

- Is the machine positioned unevenly, thus creating vibration?
- Is the floor underneath the machine uneven?

The compressor doesn't run

- It is possible the overheat protector for the compressor is in operation. Wait for the compressor to cool down.

*** Never try to repair or dismantle the unit yourself.**